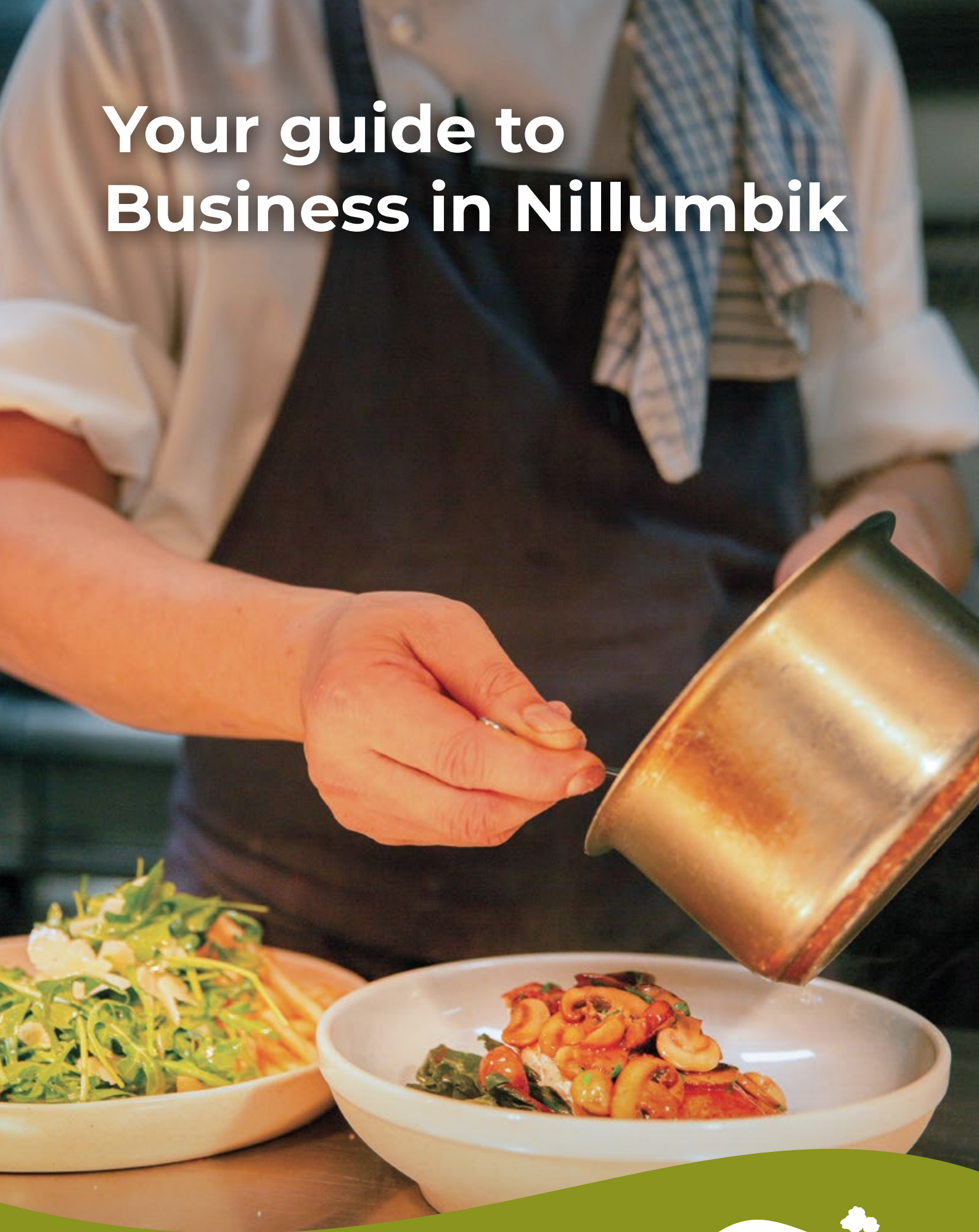


Your guide to Business in Nillumbik





Welcome

Nillumbik Shire is a unique location to operate businesses both large and small. Nillumbik Shire Council boasts a dedicated Economic Development and Tourism team that provides a robust business support program, with many activities and events being free or subsidised for local business owners.

Through this program, businesses have access to opportunities to connect and network with other local businesses, as well as develop the skills needed to grow.

Nillumbik Shire Council acknowledges the hard work and tenacity of all local businesses and associations doing an incredible job. Your businesses bring prosperity and vitality to the entire community, making Nillumbik a unique place to live and work.

There are some upcoming major projects in and around the municipality including North East Link, Hurstbridge Line Duplication and Yan Yean Road Stage 2 which will offer procurement opportunities for local business and make Nillumbik accessible for and attractive to new businesses.

This guide has been created to outline the range of support and assistance that Council offers to new and existing businesses. Feel free to contact the Economic Development and Tourism team at Council – we look forward to working with you.

Contents

About us	2	Permits and registrations	8
Profile in brief	2	Better business approvals process	9
Where are we	3	Starting, expanding or buying a business road map chart	10
Economic profile	3	Understanding Council processes and permits	11
Open for business	4	Planning permits: do I need one?	11
Local Business Associations	5	Planning	11
How we can help you	6	Building Services	11
Commercial land	6	Accommodation	12
The visitor economy	6	Health	12
Visit Nillumbik	7	Bed & Breakfast establishments	12
Strategies and plans	7	Beauty establishments	12
Grants and funding	7	Home kitchens and market stalls	12
Events and festivals	7	Food premises development	12
Business support program	7	Signage	12
Marketing and communication	7	The creative sector	13
		Accessible and inclusive businesses	13
		Sustainable energy efficient business	13
		Home-based business	13
		Liquor licensing	13
		General information	13
		Further information	14
		Other assistance and useful information	14
		Your notes	16
		Contact us	17

About us

The resident population of our Shire in 2020 was 65,219 living in 21,753 dwellings with an average household size of 2.90. The population is forecast to grow to 70,391 by 2036.

Our residents are at the higher end of the socio-economic gradient in Greater Melbourne, meaning that in many aspects, Nillumbik residents have the ability to enjoy better than average health and wellbeing.

Nillumbik's key employment areas are predominantly concentrated in the Eltham and Diamond Creek Major Activity Centres. Further, there are neighbourhood centres such as Hurstbridge and the local centres of Greensborough, Kangaroo Ground, Panton Hill, Smiths Gully, St. Andrews, Wattle Glen, Research and Yarrambat.

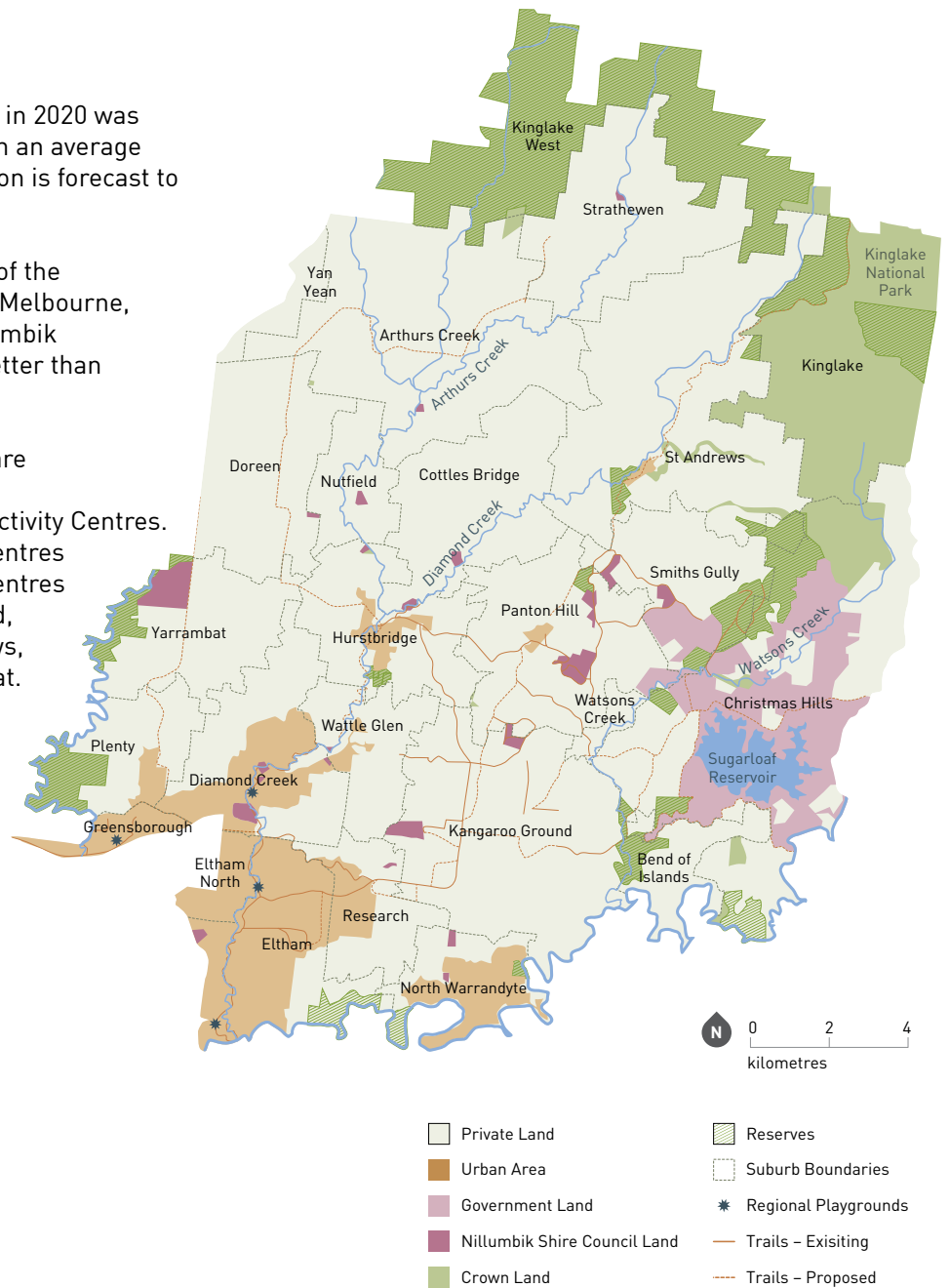


Figure 1. Map of Nillumbik Shire

Profile in brief

Area	432km²	Medium and high density housing	6%
Total population	65,219	Households fully owned or mortgaged	85%
Rateable properties	23,972	Households renting	8%
Percentage of population aged 0-17 years	24.2%	Households speaking a language other than English at home	9%
Percentage of population aged 60 years and over	19.8%	University qualification (Bachelor or higher)	28.4%
High income households (\$2,500 per week or more)	35%	Unemployment	3.5%
Low income households (less than \$650 per week)	9.9%	People who travel to work by car (either as driver or passenger)	72%
Couples with children	47%		
Couples without children	24.7%		

Where we are

We are located in Melbourne's north-eastern suburbs, about 25 kilometres from the CBD. We are bounded by Murrindindi Shire in the north, Yarra Ranges Shire in the east, Manningham and Banyule Cities in the south and the City of Whittlesea in the west. The Shire's natural boundaries are the Kinglake National Park in the north, the Yarra escarpment in the east, the Yarra River in the south, and the Plenty River in the west.

Our Shire includes the suburbs and townships of Arthurs Creek, Bend of Islands, Christmas Hills, Cottles Bridge, Diamond Creek, Doreen (part), Eltham, Eltham North (part), Greensborough (part), Hurstbridge, Kangaroo Ground, Kinglake (part), Kinglake West (part), North Warrandyte, Nutfield, Panton Hill, Plenty, Research, Smiths Gully, Strathewen, St Andrews, Watsons Creek, Wattle Glen, Yan Yean (part) and Yarrambat.

The green wedge covers approximately 39,600 hectares or 91 per cent of the Shire and is home to 12,639 residents (2017) and a number of land uses, including agriculture, conservation, tourism and rural living. This is one of 12 Green Wedges surrounding Melbourne.

Our major townships are serviced by road infrastructure with access to the M80 Western Ring Road and the Eastern Freeway. The region is also connected to the city by rail via the Hurstbridge Metro Rail Line, as well as a Public Transport Victoria bus network. Upon completion the North East Link will border us to the south-east, a key link for transport services linking Melbourne's east to west.

Economic Profile

As of June 2020 our Shire's Gross Regional Product (GRP) was approximately \$1.907m. Our business community supports around 15,662 jobs across 6500 businesses. Nearly all of these businesses are Small to Medium Enterprises (SMEs) that employ 20 persons or less. Approximately half of the working population of our employees are locals. This work force is ageing concurrent to slow population growth within the Shire. A quarter of businesses in the Shire are owned by a person aged 55+. The Economic Profile of Nillumbik Shire Council is reflective of the most current Census information from 2016 as well as projected modelling from the National Institute of Economic and Industry Research.

The largest sectors of the Nillumbik economy can be classified as:

- **Primary and Trade: Construction, agribusiness and manufacturing**

Construction accounts for 28% of all businesses and has the highest percentage of total output of all sectors. Manufacturing supports 3000 jobs. Agriculture is a very small employer however opportunities exist to grow this sector given emerging technologies and the Shire being part of the Green Wedge.

- **Knowledge-based: Education, health care and professional services**

Education and Training is a key industry supporting more than 3700 jobs. Healthcare, along with construction, is the largest employing sector and has the fastest growing output at \$180m. Healthcare workers are primarily catering for local residents' health needs and with our ageing population, we will see this trend continue. Professional services businesses make up 24% of the business base and are primarily SMEs.

- **Creative and culture: Arts, culture, recreation, tourism**

While the size of this sector is small, 45 new jobs and 11 new businesses were created between 2016 and 2020. Sport and recreation accounts for the majority of total jobs however the majority of the jobs growth occurred in the creative and performing arts sector. Tourism employed 15% of the workforce in 2017. This is a broad sub sector and accounts for \$363 million of total output.

- **Population driven: Retail and hospitality**

While 10% of our working population is employed in this sector, the challenging retail environment has seen employment decrease by 10% between 2011 and 2016. The Eltham and Diamond Creek Major Activity Centres support over 33% of all retail jobs. Growth in these sectors typically aligns with population and dwelling growth which are low.

Open for business



Local Business Associations

Nillumbik has a range of industry groups and networks that support new and existing business.

We work closely with local and regional business groups to build and grow relationships through the implementation of our Economic Development Strategy 2020-2030.

Commercial precincts in Eltham, Diamond Creek and Hurstbridge have a Special Rate Levy in place for the purpose of marketing these precincts.

Nillumbik Tourism and Business (NTB) currently represents various businesses in our region by providing networking, professional development and business opportunities.

Banyule Nillumbik Local Learning & Employment network (BNLLEN)

bnllen@bnllen.org.au
bnllen.org.au

Diamond Creek Traders Association

marketing@diamondcreekshopping.com.au
diamondcreekshopping.com.au

Eltham Chamber of Commerce & Industry

info@elthamtown.com
elthamtown.com

Hurstbridge Traders Association

info@hurstbridgevillage.com.au
hurstbridgevillage.com.au

Local Food Connect

info@localfoodconnect.org.au
localfoodconnect.org.au

In 2018, we commenced a partnership with Yarra Ranges Tourism, one of Victoria's 13 regional tourism bodies, to promote our region on a wider scale and inspire people to visit, explore and experience the beautiful landscapes, artisans and townships Nillumbik has to offer.

As part of our commitment to support a growing local economy, we are also part of NORTH Link, a regional partnership of industry, education and government established in 1995. NORTH Link aims to develop the manufacturing sector in Melbourne's north. We are also affiliated with Melbourne's North Food Group supporting food and beverage manufacturers.

Council works closely with each of these groups to align activity to benefit all.

Melbourne Innovation Centre

info@melbourneinnovation.com.au
melbourneinnovation.com.au

Nillumbik Tourism and Business

info@ntb.com.au
ntb.org.au

NORTH Link

info@melbournenorth.com.au
melbournenorth.com.au

Yarra Ranges Tourism

info@yarrarangestourism.com.au
yarrarangestourism.com.au

Please note the details for groups are subject to change. If you have trouble contacting any of them please contact business@nillumbik.vic.gov.au or **9433 3111**.

How we can help you

The Economic Development & Tourism team is comprised of experienced and dedicated professionals who are here to assist you. We work with local businesses, industry sectors, networks and associations to facilitate opportunities for business development, growth and employment creation.

The services we provide are varied and often we facilitate a pathway between you, other Council departments and State and Federal Government.

Specifically, we can help with:

- Assisting with permit applications requiring interaction with our regulatory departments.
- Advocating for government funding to support development of strategies, plans and policies.
- Assisting major businesses with government support to facilitate employment outcomes.
- Advocating to State and Federal Government and service providers for improved infrastructure.
- Provide advice and work with you to develop and refine business plans, management tools and growth opportunities.
- Delivery of business seminars, networking and training programs to ensure you have the tools to thrive.
- Distributing a regular business e-newsletter to inform of opportunities, trends and information that may affect you.
- Friendly and accessible liaison and advice on Council and government services.
- Active involvement and development in research and studies.
- Implementation of online strategies to support local businesses, including marketing campaigns.
- Raising the profile and supporting tourism as a dynamic and growing sector of the local economy.

Commercial land

Most of our commercial and industrial land is located in Diamond Creek, Eltham and Research with two Major Activity Centres in Eltham and Diamond Creek.

Activity Centres are the State Government's preferred areas to concentrate a mix of uses and activities including retail, commercial, and residential. They are well serviced by infrastructure and public transport.

Major Activity Centres are guided by Structure Plans which give vision, objectives and direction to support vibrant, prosperous, well-connected and sustainable centres.

Council has applied the activity centre zone to the majority of land within the Major Activity Centres as it provides greater flexibility of uses to support employment. Much of the available industrial land is also in the centres.

For Diamond Creek, this is Station Street and Elizabeth Street, and for Eltham, it is the Bridge Street Business Area, and has an industrial zone applied.

The Diamond Creek and Eltham Major Activity Centre Structure Plans have recently been updated to ensure policy and planning settings continue to support businesses within in centre.

Although not a designated Activity Centre, Research also has a small industrial precinct within Candlebark Close and Contour Court plus a small retail precinct.

The visitor economy

As of the latest Census data from 2016, tourism and hospitality is a major contributor to our economy. The total tourism and hospitality revenue for the region was \$395.3m and the total value added to the economy was \$188.7m. The impacts of COVID-19 are yet to be measured and will impact current figures, however this remains a growth industry.

The Shire attracts around 184,314 day trips and an annual average of 58,788 overnight trips (under-representing the true level of visitation as it only includes visitors who have travelled greater than 50km for their trip as per the most recent Census data available).

Nature-based tourism is a key drawcard with cyclists and bushwalkers drawn to the many bushland reserves in the Green Wedge. The region is also renowned for its authentic arts and culture experience, boutique wineries and family attractions.

We are home to a number of significant icons and attractions including Montsalvat, Diamond Valley Miniature Railway, Kangaroo Ground Memorial Tower, markets in Eltham, Hurstbridge, St Andrews, Sugarloaf Reservoir, Edendale Community Environment Farm and our two highly regarded regional playspaces Eltham North Adventure Playground, and Diamond Creek Regional Playspace featuring the Diamond Creek Tram Cafe. The impacts of COVID-19 have yet to be determined and have not been captured or reflected in our data collection.

Visit Nillumbik

Our official visitor website visitnillumbik.com.au provides information about what's on, where to stay and what to see and do.

In addition to the website, marketing activities are supported by active Visit Nillumbik Facebook and Instagram pages. You can like the pages to stay connected with what's happening and use **#visitnillumbik** to engage with and be promoted via social media.

Yarra Ranges Tourism has numerous opportunities for businesses to partner with them. See yarrarangestourism.com.au for more information.

Grants and funding

Council offers a number of grant programs throughout the year which support projects that create community partnerships, encourage sharing of resources and respond to community needs.

There are also a number of external grant and funding opportunities available which can assist you to take your business to the next level.

For more information please contact our Grants Officer via grants@nillumbik.vic.gov.au.

Events and festivals

We host a growing number of events and festivals throughout the year, ranging from community festivals to large region-wide events.

Our Events team are available to assist you plan your event including; finding event venues for your use and providing advice on logistics, planning, permit requirements, marketing, promotion and coordination of Council services.

Our website's event calendar is also available to you to promote community-run, not-for-profit events being held within the Shire.

For more information, please contact our Events Unit via events@nillumbik.vic.gov.au or phone **9433 3276**.

Business support program

We offer ongoing support for local small businesses and new start-ups with a vision for growth and increased local job opportunities.

We host a comprehensive range of local workshops, mentoring, seminars and networking events throughout the year, aimed at providing you with the skills, tools and advice you need. These, and other workshops and business events, are promoted through our business newsletter and are updated regularly on our website.

For more information please visit nillumbik.vic.gov.au/business and subscribe to our monthly Business in Nillumbik newsletter.

Marketing and communication

Most new and existing businesses need to do some basic marketing initiatives to be successful. A planned approach to marketing and communications is an essential part of running a business.

There are many avenues you may want to consider. However, maintaining a good balance in your marketing activities is important to ensure you get the best return on your investment.

Nillumbik Shire Council works with industry and government bodies in developing workshops and learning opportunities specifically designed to help Small Businesses.

For more information on events and workshops visit nillumbik.vic.gov.au/business-events.

Permits and registrations



Better business approvals process

Thank you for choosing Nillumbik as a place to start or grow your business.

The Economic Development team is available to provide support for businesses.

We're your first point of contact before you apply, during the application process, and after you open the doors.

We can provide information up-front and discuss the steps you'll need to take to open your business. We'll clarify who to speak to and the support available from Council or other organisations, based on your circumstances.

At any time, we're here to give you the right information **before** you sign a lease or purchase a property, to avoid you making costly mistakes.

Whether you have plans for a new business and want to get started, or are taking over or expanding an existing business, you may need permission from Council to operate.

We understand that it can be difficult to know where to start. The image on the page opposite demonstrates the roadmap to help you understand the permit application process, and the impact of regulations on your plans.

What types of permits might my business need?

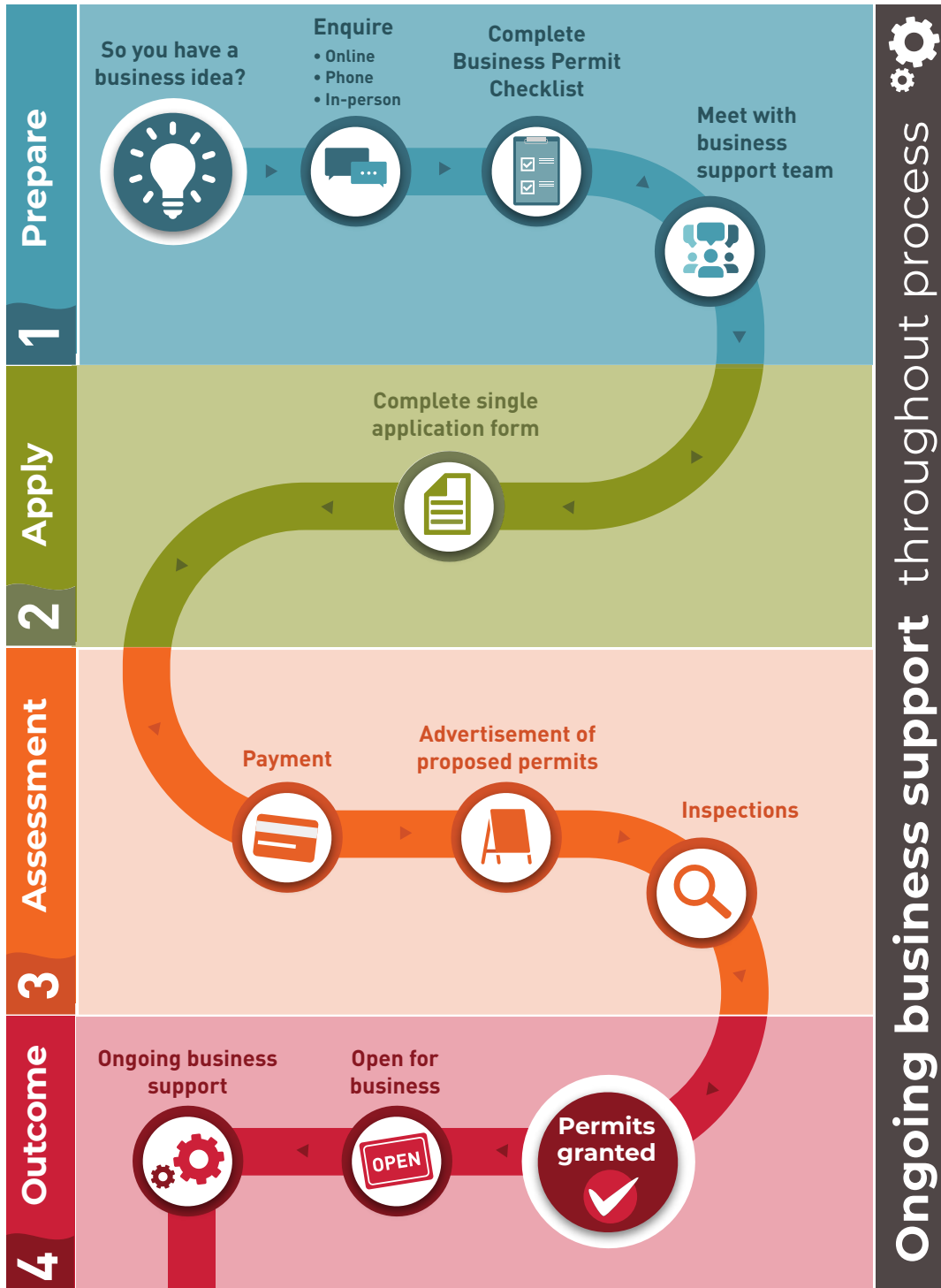
There are a range of permits or registrations your business might need including:

- **Planning** - includes permits for subdividing land, use of land, use of building for business, displaying signs, street trading and other statutory planning requirements.
- **Building** - includes building permits that relate to the method of construction of a building or development, and the use of the building to ensure it meets relevant building codes.
- **Health** - includes registration and certificates required for wastewater and septic systems, food premises, accommodation premises, hairdressers, beauty premises and tattoo premises.
- **Community Safety** - includes traders' parking permits, domestic animal business permits, and footpath trading permits for furniture, display items or A frames placed on the footpath or on council land.

We have developed a Business Permit Questionnaire to help you determine which permits may apply. Once the checklist is submitted, a Council officer can provide you with detailed information in regard what permits you may require and how to apply.

You can complete the checklist by visiting nillumbik.vic.gov.au/business-permit-questionnaire

Starting, expanding or buying a business road map chart



Understanding Council processes and permits

We are committed to building an economic, social and environmentally-sustainable future for residents and visitors. In doing this, it is important that we have a strategic approach to business activity to ensure we grow in a sustainable and safe manner.

Permits: do I need one?

Before you take action that may require planning approval you should:

- Read our permit application process
- Call us if you have any questions regarding any planning forms
- Complete a business permit checklist.

To access these forms visit nillumbik.vic.gov.au/business or call **9433 3111** to request a pre-application appointment.

Planning

Operating a new business is an exciting time. It is important to discuss your plans with our Planning Services team early, so that you are well prepared to understand how planning controls may guide your business.

Any use and development must comply with the relevant planning controls. The Nillumbik Planning Scheme sets out when a planning permit is needed, and considers issues such as land use, the appearance of a building and advertising signage, parking needs, amenity impacts, operating hours, external works and determines whether a place of assembly is required for events and activities.

We offer a pre-application service to discuss your proposal before you finalise your plans. In some instances, a planning permit may not be required; however, it's best to find out early!

Whether you are looking to run a business from home, need a liquor license for a bar or food premises, open a new business, change how the land is used, or undertake any other form of use or development, you need to know whether you need a planning permit.

Depending on the nature of your proposal, the permit application may need to be referred to authorities such as VicRoads, Environment Protection Authority Victoria, Country Fire Authority or local water

authorities for feedback and consent. Internal referrals are also part of the planning process and advice may be sought from areas such as our Infrastructure, Environmental Health and Economic Development & Tourism teams.

You need to allow time for your application to be assessed and for Council to come to a decision. Council strongly recommends that you contact us early and if you need help, ask for a pre-application meeting. A simple application assessment can take several months but engaging with Council early and having all the information required will reduce this timeframe.

There may be requests for further information from referral authorities, notice to people who may be affected such as neighbours and community groups, as well as time to consider any objections to your proposal. For more information on the planning process, please visit Council's website.

Please note: If you are leasing premises, you may still require a planning permit.

Building Services

Nillumbik Building Surveyors provide a high-quality building permit and compliance service within Nillumbik and beyond.

Our expert staff provide clear, consistent and concise advice on building permit requirements. We offer a prompt, compliant, unbiased and value-for-money building permit service, focused on ensuring all buildings are constructed to provide and maintain the health, safety and amenity of occupants.

Our service includes:

- Pre-application assessment and advice
- Building permits (domestic and commercial)
- Building inspections
- BAL assessments (bush fire assessment reports)
- Report and Consent
- Essential Safety Measures Inspection & Reports.

For more information please contact nillumbik@nillumbik.vic.gov.au or **9433 3111**.

Accommodation

Nillumbik is a popular destination and as visitor numbers increase, the demand for accommodation is growing.

The Nillumbik Planning Scheme dictates what type of businesses can operate in specific zones, so if you are thinking of starting an accommodation business, it is highly recommended that you speak to Planning Services to ensure it is an allowed use on your property.

For more information please contact nillumbik@nillumbik.vic.gov.au or **9433 3111**.

Environmental Health

The Environmental Health team is responsible for registering and inspecting a wide range of businesses that operate in Nillumbik.

Bed & Breakfast establishments

If your establishment can accommodate more than five people at any one time (excluding family members), you must be registered with Council as a Prescribed Accommodation establishment in accordance with the provisions of the Public Health and Wellbeing Act 2008.

Additional requirements will need to be observed if food will be served on the premises.

Beauty establishments

If you are wishing to offer beauty treatments such as electrolysis, hairdressing, acupuncture, tattooing, body piercing, or other similar business you must register your business with Council.

You should obtain a copy of the Department of Health's Infection prevention and control guidelines for hair, beauty, tattooing and skin penetration industries, to find out more information on the risks associated with personal care services and necessary precautions.

www.health.vic.gov.au/infectious-diseases/hair-beauty-tattooing-and-skin-penetration-industries

Home kitchens and market stalls

Food businesses, including those operated from home, that handle, store or prepare food for the purpose of sale must be registered with Council. Council's Environmental Health team may grant registration for domestic food production to the following:

- Occasional event organisers, i.e. fetes or charity functions
- Home/mobile caterers
- Market stall holders.

For more information on the registration process, refer to Chapter 3 of the *Australian Food Standards Code*.

Food premises development

Prior to your business becoming operative, you must register your food premises under the *Food Act 1984*. Council recommends new food businesses undergo approval of plans to ensure the design and construction meets the relevant standards.

Before undertaking any construction on a proposed or existing food premises, approval must be obtained from Council's Environmental Health team. Considerations need to be made to aspects including flooring, fittings, hygiene, and refrigeration.

Some of the activities that Environmental Health officers undertake to monitor the safety of food prepared and sold include:

- Inspecting food premises to ensure food is being stored, prepared and sold in a safe manner
- Conducting food safety program compliance checks
- Investigating food-related complaints and incidents of illnesses associated with food.

For more information please contact the Environmental Health team via health.services@nillumbik.vic.gov.au or call **9433 3111**.

Signage

The type of signage you desire will determine which department at Council you should contact:

- For onsite/shop front business signage contact Statutory Planning.
- For A-Frame signage contact Community Safety and Amenity.
- For information on tourism signage which directs visitors to tourist attractions and accommodation, contact Economic Development & Tourism.

For more information please contact Customer Service on **9433 3111**.

The creative sector

Council is invested in the creative sector, through its *Arts and Cultural Plan 2018-2022*.

Establishing a creative business is not dissimilar to any other business type and requires the same regulatory assessments from planning. Council also offers several arts grant opportunities.

For more information please contact our arts team on artsinfo@nillumbik.vic.gov.au or phone **9433 3359**.

Accessible and inclusive businesses

Accessibility is good for business. As a business, you play an important role in ensuring services are accessible for customers with a disability. With reasonable adjustments and a welcoming attitude it can make a world of difference to everyone.

The *Disability Discrimination Act 1992* requires businesses to provide equal access to goods and services for people with disability.

The *Come in... We're Accessible* website enables businesses to do a quick self-assessment to establish current standards and identify areas for improvement.

For more information please contact the Inclusion team via inclusion@nillumbik.vic.gov.au or **9433 3111**.

Sustainable business

Businesses can access energy efficiency upgrades from accredited providers at a reduced cost via The Victorian Energy Upgrades. The provider claims Victorian Energy Efficiency Certificates related to projected energy savings and provides the products at a reduced cost.

Examples of eligible activities include replacement of old lighting with LED lighting, replacing old hot water systems, upgrading air-conditioning or refrigeration systems and installation of insulation. Council cannot vouch for providers but can recommend this as an option that allows upgrades to fixed appliances at a reduced cost to businesses.

As Council's Climate Action Plan is endorsed, further sustainable business programs will be implemented.

Home-based business

A large proportion of businesses are operated from home in Nillumbik. If you are running a home-based business there may be regulatory requirements that will apply to you. If you are running a business consultancy from your home and don't employ staff, it is unlikely you will need a planning permit. However, it is always worth checking with our Planning Services team.

Contact Planning Services via planning.business.support@nillumbik.vic.gov.au or phone **9433 3111** to determine permit requirements.

Liquor licensing

If you intend to supply liquor in Victoria you must apply for a license through the *Victorian Commission for Gambling and Liquor Regulation*. This is also the case if you wish to serve liquor on a temporary basis, for example as part of a festival or event.

When a liquor license or BYO permit is granted, it is for a defined area and timeframe. A plan needs to be submitted to the *Victorian Commission for Gambling and Liquor Regulation* (VCGLR) as part of the application process. You may also need a planning permit to supply, serve and consume liquor on or off your premises.

If you need assistance through this process or to make sure you are on the right track please contact the Planning Services team to assist and help guide you through the process.

For more information please contact Planning Services via nillumbik@nillumbik.vic.gov.au or **9433 3111**.

General information

For general information and permit details relating to planning services, building, food, signage, street furniture, rates and septic tanks, visit the [Nillumbik Local laws, permits and parking page](http://nillumbik.vic.gov.au/council/local-laws) nillumbik.vic.gov.au/council/local-laws.

If you would like to discuss your business proposal or set up a planning pre-application meeting please contact Economic Development & Tourism via business@nillumbik.vic.gov.au or **9433 3111**.

Further information

Other assistance and useful information

AusIndustry

For information on Federal Government assistance programs and services.

business.gov.au

Australian Bureau of Statistics (ABS)

ABS provides statistics on a wide range of economic and social matters, serving government, business and the general population.

abs.gov.au

Australian Business Register (ABR)

Apply for and update your details.

abr.gov.au

Australian Securities and Investments Commission (ASIC)

Provides information relating to company name and corporation information.

asic.gov.au

Australian Tax Office (ATO)

Tax information for starting a business, individuals, companies and organisations, from the Tax Department of the Australian Federal Government.

ato.gov.au

Australian Trade Commission (Austrade)

The Australian Government agency that helps and assists Australian companies to export products and services.

austrade.gov.au

Banyule Nillumbik Local Learning and Employment Network

Support students to improve education, training and employment outcomes.

bnllen.org.au

Business Victoria

A resource for businesses to help with starting a business, templates and tools, grants, development and growth.

business.vic.gov.au

Consumer Affairs Victoria

Information about fair trading, business licensing, registration and conduct.

consumer.vic.gov.au

Fair Work Commission

An information gateway to information and advice about Australia's workplace rights and rules, including awards and national employment standards.

fairwork.gov.au

Melbourne's North Food Group

Melbourne's North Food Group is an active and dynamic industry cluster that represents over 400 food, beverage and fibre businesses across Melbourne's north.

northlink.org.au/projects/food

Melbourne's North Joblink

A free service that is available to both businesses and residents in Melbourne's North to advertise and apply for local jobs.

www.mnjoblink.com.au

Melbourne Innovation Centre

Provides businesses with low-cost, high-quality, digital advisory services to help develop sustainable businesses.

melbourneinnovation.com.au

Northlink

NORTH Link is a strong regional partnership of industry, education, health and government, established in 1995, that plays an integral role across northern metropolitan Melbourne.

northlink.org.au

Regional Development Victoria (RDV)

Provides information on the Victorian State Government's policies and programs for developing rural/regional Victoria.

rdv.vic.gov.au

Small Business Mentoring Service (SBMS)

Mentors from a diverse range of business backgrounds who are able to assist small business owners.

sbms.org.au

Sustainability Victoria

Encouraging and supporting business and communities to promote environmental sustainability in water, energy and materials.

sustainability.vic.gov.au

Visit Victoria

Providing tourism and industry news, research, advice and resources.

tourism.vic.gov.au

Victoria Tourism Industry**Victorian Chamber of Commerce and Industry**

Helps businesses achieve growth through advocacy and consulting services.

victorianchamber.com.au

Victoria Tourism Industry Council (VTIC)

Provides the latest news and information, connections to other tourism and events professionals

www.vtic.com.au

Work Safe Victoria

Information on a safe and healthy workplace for your workers and contractors including Emergency Management.

worksafe.vic.gov.au



Nillumbik Shire Council

Civic Drive (PO Box 476) Greensborough Victoria 3088
03 9433 3111 | business@nillumbik.vic.gov.au



nillumbik.vic.gov.au/business