

OPEN FARM DAY

Farming on the Fringe

Free*
Family
Event

Sunday
7 April
10am-4pm



Trail Map and Passport

*some activities are at a cost

Ever wondered what it's like to be a farmer or eat home grown produce? Open Farm Day is your chance to visit working farms, meet local farmers and enjoy local produce. Farms and businesses across Nillumbik, Whittlesea and Kinglake Ranges are opening their gates to showcase farming on Melbourne's fringe.

This **Trail Map** and **Passport** is your ticket to discovering the 16 farms and local producers opening their gates for Open Farm Day on Sunday 7 April. Plan your own Open Farm Day trail and explore this beautiful region.

A diverse mix of farms are found in the region including fruit and veggie farms, livestock and animal farms, orchards and vineyards. Choose the farms you want to visit to make your own Open Farm Day trail and experience:

- farm tours
- demonstrations
- farm animals
- product tastings
- and more...

Present your **Open Farm Day Passport** (on page 3) at each farm to collect a sticker. Collect three or more stickers and complete the visitor survey to enter the prize draw, featuring prizes from Omaru Alpaca Farm, Quest Apartments, Going Green Solutions, Kings of Kangaroo Ground, Plenty Ranges Art & Convention Centre, Imbue Distillery and Funfields! Full details on how to enter the prize draw are on page 3.



Open Farm Day is an all-weather event.

- Wear appropriate clothing.
- Wear covered shoes on all farms.
- Supervise your children at all times.
- Leave your pets at home.
- Stick to designated visitor areas on farms.
- Fill your car up with fuel before you start your Open Farm Day trail.
- ATMs available at the Hurstbridge, Eltham, Doreen & Mernda, and Kinglake branches of Bendigo Bank.

And remember to:


- Bring your camera.
- Bring some cash to purchase some regional farm gate produce.
- Take care; these are working farms, be careful around water bodies and farm equipment and abide by any farm signage.
- Some farms are located on single lane country roads – please be cautious.
- Parking may be limited on the property. If parking on the street /roadside please do so safely.

Have a great day out exploring the region!

Put yourself in the picture!

Take a snap of you and your family at Open Farm Day, upload it to social media and tag it with **#openfarmday2019** and **#visitnillumbik**.

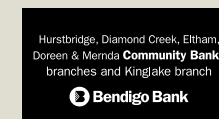
 www.nillumbik.vic.gov.au/openfarmday

 **9433 3276**

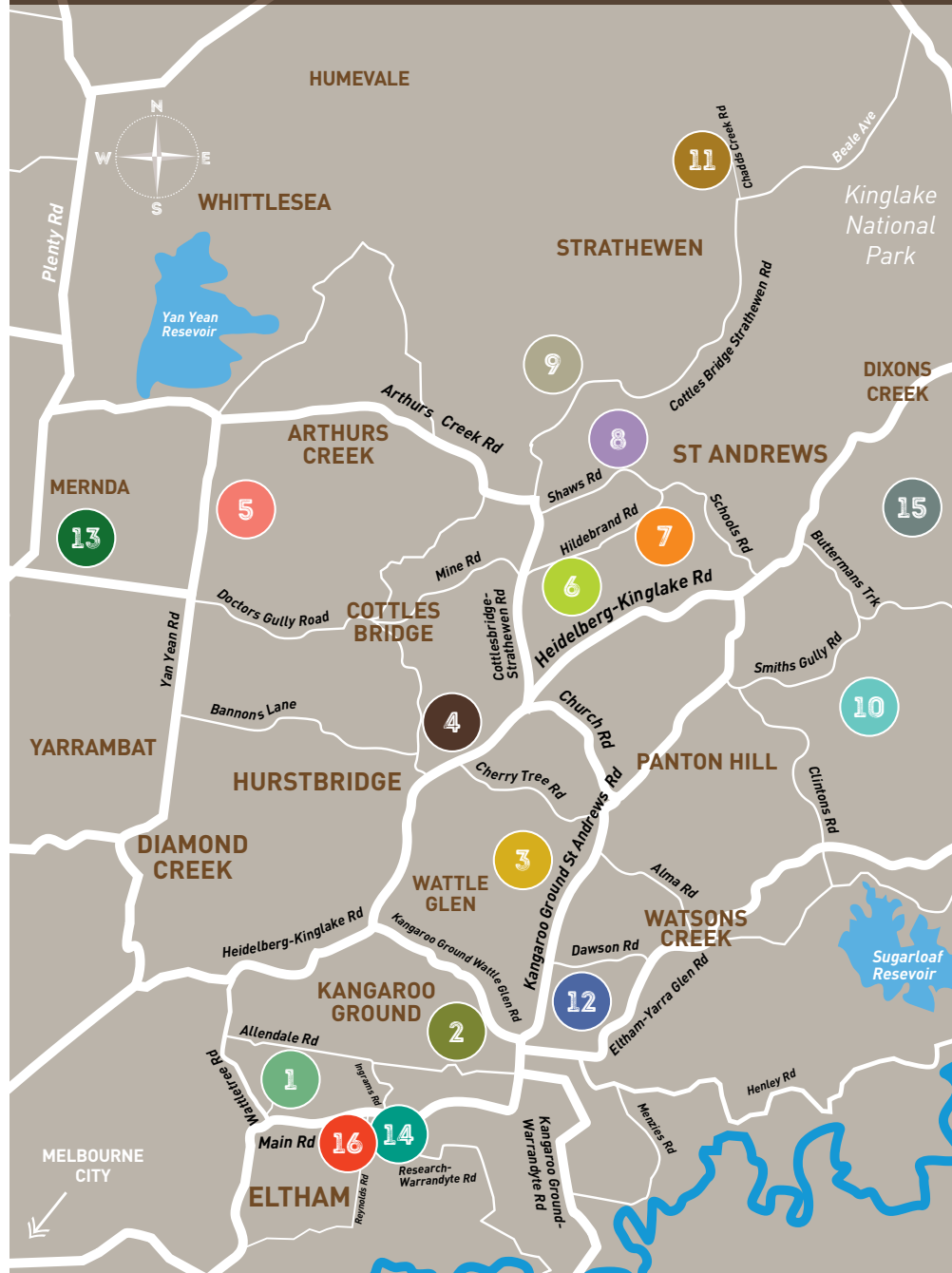
 facebook.com/openfarmday



Event Partners:



Open Farm Day Area Map



2 prize packs to be won! Prizes include Omaru Alpaca Farm, Funfields, Quest Apartments, Going Green Solutions, Imbue Distillery, Kings of Kangaroo Ground, Plenty Ranges Arts & Convention Centre. Check out www.nillumbik.vic.gov.au/openfarmday for prizes.

How to enter:

- Present your Open Farm Day Passport at each open farm to collect a sticker.
- Collect three or more stickers and complete the visitor survey on page 4 to enter the prize draw.

Multiple ways to enter:

- Remove this page and hand in at the last farm you visit or Craft Kitchen & Bar Eltham.
- Enter online at www.nillumbik.vic.gov.au/openfarmday and attach a photo of your Passport.

1	Edendale Community Environment Farm
2	Kings of Kangaroo Ground
3	Weeping Grevillea Nursery
4	Hurstbridge Farmers Market
5	Balashi Flowers
6	Hildebrand Ridge Organic Vineyard

7	Omaru Alpaca Farm
8	Shaws Road Winery and Cidery
9	Apted's Pear and Apple Orchard
10	Nillumbik Estate
11	Sugarloaf Produce
12	Easthill Estate

13	Turners Bakehouse Eatery
14	Craft Kitchen and Bar
15	Yarra Valley Custom Meats
16	Jock & Eddie



OPEN FARM DAY VISITOR SURVEY

Q1. Postcode

Q2. On a scale of 0-10 how likely are you to recommend Open Farm Day to a friend or family? (Please tick)

1 2 3 4 5 6 7 8 9 10

VERY UNLIKELY VERY LIKELY

Q3. How did you find out about Open Farm Day?

Facebook Weekend Notes
 Open Farm Day postcard Roadside sign
 Other – please specify

Q4. Why did you choose to attend Open Farm Day?

.....

Q5. Which farms did you visit? (Please tick)

1 Edendale Community Environment Farm	5 Balashi Flowers	9 Apted's Pear & Apple Orchard	13 Turners Bakehouse Eatery
2 Kings of Kangaroo Ground	6 Hilderbrand Ridge Organic Vineyard	10 Nillumbik Estate	14 Craft Kitchen and Bar
3 Weeping Grevillea Nursery	7 Omaru Alpaca Farm	11 Sugarloaf Produce	15 Yarra Valley Custom Meats
4 Hurstbridge Farmers Market	8 Shaws Road Winery and Cidery	12 Easthill Estate	16 Jock & Eddie

Q6. Which was your favourite farm and why?

.....

Q7. What did you enjoy most about Open Farm Day?

.....

Q8. How could Open Farm Day have been improved?

.....

Q9. Would you attend the next Open Farm Day? Y N

Q10. Would you be happy to participate in an online follow up survey?

Y N Please provide email address below.

Provide your contact details to be entered in to the prize draw:

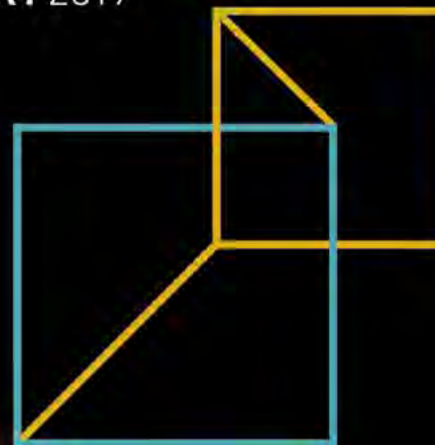
Name

Contact number

Email

NILLUMBIK PRIZE CONTEMPORARY ART 2019

Finalist Exhibition
30 May - 21 July



The Nillumbik Prize for Contemporary Art is a biannual acquisitive art prize open to emerging and established artists working in any medium across Australia. The exhibition features artworks by the finalists who responded to the themes of *Place and Space*.

The \$20,000 prize recipient will be announced on the opening night.

For more information, visit
www.nillumbik.vic.gov.au/nillumbikprize

Montsalvat



www.visitnillumbik.com.au



Edendale Community Environment Farm

30 Gastons Road, Eltham

Visit the beautiful surrounds of Edendale Farm nestled close to Eltham along the Diamond Creek adjoining the Eltham North Adventure Playground.

You can participate in self-guided walks around the farm, children's clipboard activities, explore the native plant nursery, plus you can bring a picnic or visit Café Eden for a coffee, cake or light meal.

Farm activities:

Pony rides, face painting, goat milking demonstrations, feed our goat kid teenagers, chicken and sheep, land management walk and talk and self-guided activities.

Farm gate sales: Fruit, veggies, eggs, indigenous plants and vegetable seedlings.

Toilet: Available

Food: Café Eden open from 9am-3pm

www.edendale.vic.gov.au



Kings of Kangaroo Ground

15 Graham Road, Kangaroo Ground

Ken King planted Pinot Noir and Chardonnay grape vines on his Kangaroo Ground vineyard back in 1990, which has grown in to a well-equipped winery and the established brand, "Kings of Kangaroo Ground".

With a passion for the pursuit of excellence achieved through minimalist winemaking, Ken ensures that all his wines are handcrafted, vegan compliant and pesticide free.

You are welcome to visit the vineyard and see the wonderful vines and winemaking process.

Farm activities:

Winery and vineyard talks starting every hour from 10am to 3pm.

Farm gate sales:

Handcrafted wine

Toilet: Available

Food: No food on-site however nearby restaurant's open.

www.kkg.com.au

Weeping Grevillea Nursery

10 Bartletts Lane, Kangaroo Ground

(use 355 Kangaroo Ground St Andrews Road, Panton Hill for GPS)

The Weeping Grevillea Nursery started as a hobby for Vikki and Wayne Tonissen over 30 years ago and from there it grew in to a small, yet productive agricultural enterprise. The nursery specialises in producing grafted standard weeping grevilleas with a range of regular grevilleas.

In addition to this there is a small citrus orchard producing varieties of lemons, limes, grapefruits and oranges. Regular tours of the nursery and orchard will run

through the day with an opportunity to meet the grower and buy direct from the farm.

Farm activities:

Guided tours of the nursery and orchard starting every hour from 11am to 3pm.

Grafting demonstrations at 11.30am and 2.30pm.

Farm gate sales: Weeping grevilleas and in season produce.

Toilet: Available

Food: Tea and coffee

www.weepers.com.au



Hurstbridge Farmers Market

8.30am-1pm

Fergusons Paddock, Arthurs Creek Road, Hurstbridge

Hurstbridge Farmers Market is located on the edge of the Yarra Valley in the beautiful township of Hurstbridge. This treasured Farmers Market is full of locally made produce, food, organic fruit and vegetables and simply awesome vendors, we now also have local makers. Be one of the first 200 to visit the Open Farm Day stand to take home a FREE cooler bag to keep your purchases fresh

whilst you continue to enjoy your day at the farms in the region.

Market activities: Market Garden Party, with morning tea or lunch available from the market vendors, music and sausage sizzle.

Toilet: Available

Food: Food stalls available

www.hurstbridgefarmersmarket.com.au





Balashi Flowers

1130 Yan Yean Road, Doreen

Balashi Flowers is a family owned and run business, with over 15 years of extensive knowledge and experience in floristry, producing fresh cut flowers for both the wholesale market and direct to the public. Balashi Flowers sells a diverse range including indoor and outdoor plants, pots, orchids, gerberas, roses, lilies and more.

Farm activities: Make a posy workshop, every 2 hours (small fee).

Farm gate sales: Freshly cut flowers and indoor plants.

Toilet: Available

Food: Snacks available for purchase.

www.facebook.com.au/balashiflowers

Omaru Alpaca Farm

190 Hildebrand Road, Cottles Bridge

Sian and Rob Rickards began their alpaca venture in 2011 with a herd of five alpacas. Since then the herd has grown to over 60 alpacas. April is an exciting time at Omaru Alpacas as they welcome baby alpacas (cria) to the herd.

Open Farm Day will offer you the opportunity to get up close and personal with these charming and unusual animals and learn more about the products that can be made from their fibre. There will be a couple of future stud boys

available for a walk at certain times and informational talks throughout the day.

Entry fee: \$5 per adult, children free.

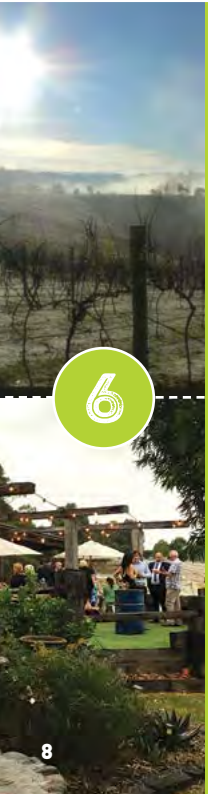
Farm activities: Farm walks and talks and feeding the alpacas. Farm shop. Viewing veranda.

Farm gates sales: Alpaca products

Toilet: Available

Food: On site coffee machine. Bring along a picnic from one of the local supporting food vendors.

www.omaru.com.au



Hildebrand Ridge Organic Vineyard

160 Hildebrand Road, Cottlesbridge

Hildebrand Ridge is an organic vineyard. They follow sustainable farming methods and will embrace lower yields in an effort to tend and care for the land. They do not use insecticides and allow the natural balance of other insects to deal with any unwanted pests. Sheep help control the weeds and control mildew through the use of everyday kitchen products.

Enjoy stunning views of the Melbourne foot hills.

Farm activities: Wine Tasting, meet and talk to winemakers, poetry and music presentation at 2pm

Farm gate sales: Chardonnay, Pinot, Cabernet wines and boutique beer.

Toilet: Available

Food: Wood fired pizza, desserts, soft drink and espresso coffee.

www.hildebrandridge.com.au

Shaws Road Winery and Cidery

225 Shaws Road, Arthurs Creek

Shaws Road Winery has 14 acres of vineyard with plantings of cool-climate varietals including Chardonnay, Pinot Noir and Cabernet Sauvignon. The harvest will just be finishing up in April with the last of the red wine grapes (which ripen last) to be picked and crushed. The wines are made and cellared on site, with the current production level at over 750 cases per annum.

Farm activities: Winery equipment displays – de-stemming, wine presses,

bottling and labelling machinery. Tours of the cellar, with a display of photos of the full production cycle of a year at the winery.

Tractor display – a range of tractors big and small, old and new.

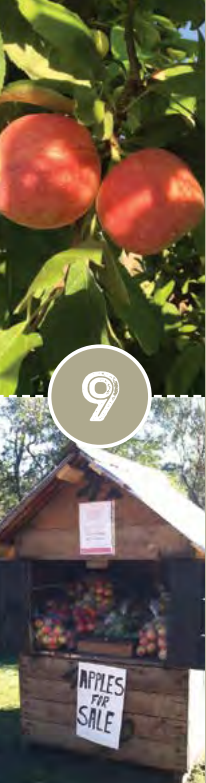
Vintage stationary engine display provided by the Eltham Steam and Stationary Engine Preservation Society.

Toilet: Available

Food: Full menu available.

www.shawsroad.com.au





9

Apted's Pear and Apple Orchard

864 Cottles Bridge-Strathewen Road, Arthurs Creek

The Apted family have been growing apples and pears for over 100 years across five generations at Arthurs Creek. Their fruit is stored, packed and marketed locally through Melbourne Wholesale Market and directly from their farm gate.

Come along and tour the orchard and cool store and hear the history of the Apted family and their experiences farming on Melbourne's urban fringe.

Farm activities:

Orchard and packing shed talks and short tours.

Farm gate sales: Apples and pears

Toilet: Available

Food: Apples and pears for sale.

www.aptedSORCHARDS.com.au



10

Nillumbik Estate

195 Clintons Road, Smiths Gully

John Tregambe's family have been making wine for generations in Italy with their age-old wine making techniques at Nillumbik Estate. The large deck at the cellar door offers breath taking views of the Kinglake Ranges; ready to be soaked up with a glass of fine wine and delicious fare.

Farm activities: Our winemaker will run a "Vine to Wine" class which will look at managing the process and includes a tasting of vintages not yet available to the

public. Limited places, bookings essential \$30 per person.

Farm gate sales: Award winning, handcrafted wines. Local produce.

Tastings: Wine from Nillumbik Estate, bread from A Local Baker, olive oil (infused) from Hildebrand Grove and Pantan Hill olives.

Toilet: Available

Food: Café open 11am-5pm. Enjoy a range of rustic gourmet pizzas, an antipasto platter and seasonal salad, made from local produce. Dessert, tea and coffee.

www.nillumbikestate.com.au

Sugarloaf Produce

2/211 Chadds Creek Road, Strathewen

Sugarloaf Produce is a mixed farming enterprise specialising in Swiss Brown mushroom, Australian garlic, and free-range egg production, without the use of synthetic chemicals. The business is not yet certified organic; however, the farm strictly adheres to the Australian Certified Organic Standard. Compost is made on site using a mixture of farm green waste, cow, sheep and poultry manure, sawdust from our mill and other organic materials. Biological techniques such as crop rotation,

mixed cropping and mixed stocking are also utilised.

Entry fee: Gold coin donation

Farm activities:

Farm tours 10.30am and 1.30pm
Animal feeding 11.30am
Portable saw mill demonstration 2.30pm

Farm gates sales: Seasonal fruit and veggies, and eggs.

Toilet: Available

Food: Award winning Blue Pear Pantry.

www.facebook.com/SugarloafProduce



11

Easthill Estate

100 Kangaroo Ground - St Andrews Road, Kangaroo Ground

Easthill Estate is a local boutique Cellar Door offering wine tastings, wine sales, and "Platters by Preference" where you can create your own platter experience, by choosing your own crackers, deli meats, dips and cheeses.

This can be enjoyed overlooking our vineyard, or purchase your items to take away with you.

Take a seat in our indoor seating, our grassed outdoor area with tables and chairs, or we can provide picnic rugs to use in our outdoor area.

Farm gate sales: Cellar Door

Toilet: Available

Food: Platters by Preference

www.easthillestate.com.au



12



KINGS OF KANGAROO GROUND

Celebrating our recent 5 Star awards

from **Winestate Magazine** (Mar/Apr 2019 edition)

2015 Avondale Shiraz • 2016 Avondale Shiraz

on tasting this weekend at our Cellar Door

handcrafted wine - vine to bottle in our winery - vegan friendly

Chardonnay • Sauvignon Blanc • Pinot Noir • Shiraz • Cabernet Sauvignon

Cellar Door Open every Saturday 10am-3pm



Winery & Cellar Door: 15 Graham Road, Kangaroo Ground

P: 03 9712 0666 E: ken@kkg.com.au W: kkg.com.au

Turners Bakehouse Eatery

107 Schotters Road, Mernda

Historic, authentic and artisan, this boutique bakery with its traditional wood fired Scotch oven was built in the late 1890's by Charles and Stephenson Turner. The bakery has been lovingly restored after being closed in the 1940's and in honour of its inspiring founders they still bake all their artisan breads, pies and pastries in their historic wood fired Scotch oven.

The signature sourdough is made with a mother culture that is over 100 years old. This not only makes it taste amazing, but it's healthy too!

www.turnersbakehouseeatery.com.au

Bakery activities: See our bakers make fresh pastries in the original brick oven. Tours available based on demand. Bread tasting of our range of breads.

Bakery sales: Special coffee and freshly baked pastry. Authentic wood-fired sourdough breads; hand-made pies, pasties and sausage rolls; delicious hand-made sweets and cakes.

Toilet: Available

Food: Bakery open 9am – 3pm offering morning tea, lunch and afternoon tea.



13



Let us help you green your world!

BUSINESS AND
HOUSEKEEPING SUPPLIES



ECO-LIFESTYLE PRODUCTS
FOR YOUR HOME



ECO-FRIENDLY CATERING
& PACKAGING SUPPLIES



Going Green Solutions has been at the forefront of sustainability for over 10 years.

T: 9718 0126 | | goinggreensolutions.com.au

Craft Kitchen and Bar

70 Commercial Place, Eltham. 11am onwards

Our Chef's have designed a contemporary menu that showcases the freshest sourced local produce and offers a range of options for all tastes. It's also our aim to supply the best possible range of local and international craft beers, over our eighteen chilled taps.

Our stage offers live entertainment whilst supporting local musicians. Craft has become an icon of Eltham, attracting a wide range of artists and musicians. Driven to provide the Australian Indigenous art

community with a global platform, Dreamtime Distributions connects artists with art enthusiasts with a permanent exhibition.

Activities: Free beer, wine or soft drink with any \$15 food spend (limited to one per person on the 7th April).

Finish off your 'Open Farm Day' with a refreshing beverage and listen to Terence Jeremaia perform live from 4pm.

Toilet: Available

Food: Full menu available

www.craftbar.com.au



14



Yarra Valley Custom Meats

181 Bottings Lane, Dixons Creek

Yarra Valley Custom Meats are a family run farm retail butcher shop that specialises in free range pork, lamb and beef. The shop is open seven days a week and offers the paddock to plate experience for people interested in where their meat comes from.

Farm activities:

Butchery demonstrations, breaking down lamb at 10.30am.

Sausage making demonstrations 12pm & 2.30pm.

A talk on what cuts are best for roasting, slow cooking, BBQ

meats, plus question and answer time at 11.30am and 3.30pm.

Animal nursery

Farm gate sales: Gourmet beef, lamb, pork and sausages plus free range eggs, local trout and olive oil – shop open until 5.30pm.

Toilet: Available

Food: Sausage sizzle from 11.30am until 2.00pm

www.yarravalleycustommeats.com.au

15



Jock and Eddie

1 Pryor Street, Eltham

Jock & Eddie's presents uniqueness and creativity. Jock & Eddie's is the perfect place to enjoy an inviting meal with family, friends, or colleagues. A favourite with Eltham locals, we serve freshly prepared food and fabulous coffees, teas and a variety of juices and smoothies, in a relaxed and friendly atmosphere. Our enticing menu features a mix of café favourites and tempting new dishes, plus there's always a variety of specials on offer. Jock and Eddie invites you to participate

in our Open Farms event with an inviting menu and tasty drink options.

Activities: Live entertainment and local gin tasting from Inbue Distillery.

Toilet: Available

Food: Full menu available

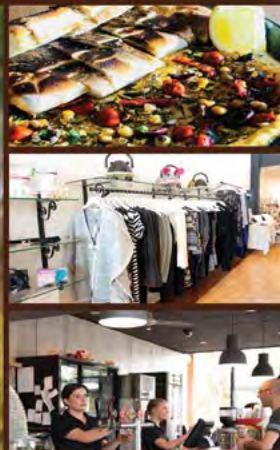
 @jockandeddie

16

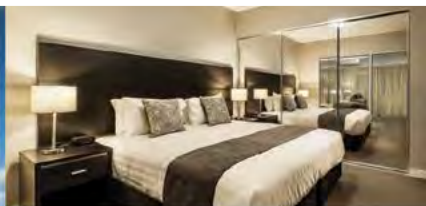


Celebrate local, shop local

30 + Eateries | 20 + Specialty stores | 20 + Health Beauty & Lifestyle



Eltham is surrounded by beautiful bespoke murals, native trees and a vibrant lifestyle. Fashion, food and fitness, Eltham Town represents eateries, specialty stores, health, beauty and lifestyle businesses. We cater for all your needs and invite you to visit Eltham Town.



QUEST BUNDOORA, WE'VE GOT YOU COVERED IN THE NORTH

Quest Bundoora offers a relaxed and comfortable accommodation experience with the choice of modern Studio, One and Two Bedroom Apartments.

Visit questbundoora.com.au or call 03 8306 0600





imbue distillery

Imbue Distillery brings you spirits rich with flavour and imbued with the story of us, founders Mel & Mick Sheard.

Pop in for a taste @ Jock & Eddie in Eltham on Open Farm Day!

jock & eddie.

www.imbuedistillery.com



QUEST EPPING, YOUR LOCAL ACCOMMODATION PROVIDER

Quest Epping offers brand new serviced apartment hotel accommodation, perfectly positioned within close proximity to Pacific Epping Shopping Centre & Urban Dining Precinct and Industrial areas.

Visit queststepping.com.au or call 03 9133 5300



Nilumbik ARTISTS OPEN STUDIOS

STUDIOS OPEN 10AM-5PM
4-5 MAY 2019
32 ARTISTS | 27 STUDIOS

artistsopenstudios.com.au

NILLUMBIK THE GREEN WEDGE SHINE

VOLGANG BEACH

New Heated Wave Pool

FUN funfields THEMEMPARK



Hurstbridge, Diamond Creek, Eltham, Doreen & Mernda
Community Bank[®] branches and Kinglake Branch

Making great things happen.

When you bank with Hurstbridge, Diamond Creek, Eltham, Doreen & Mernda **Community Bank**[®] branches and Kinglake Branch great things happen in your community.

Local projects find funding. Local clubs find sponsorship. Local schools benefit.

And, you can access a suite of financial services rivalling any bank in the country.

So, if you're not banking with us already, drop by and be part of something bigger.

**Drop into your nearest branch at Hurstbridge - 9718 0431,
Diamond Creek - 9438 4133, Doreen & Mernda - 9717 1433,
Eltham - 9439 0188 or Kinglake - 5786 1656 to find out more.**

 **Bendigo Bank**
Bigger than a bank.

bendigobank.com.au