

Nillumbik Heritage Guide

The history of significant sites in the Shire of Nillumbik



Contents

Welcome

How to use this guide

The First People of Nillumbik

Map of Heritage Sites

Arts & Culture

- 1 Victorian Artists Supplies
- 2 Dunmoochin
- 3 Eltham Library
- 4 Montsalvat
- 5 Moor-rul Viewing Platform

Local Cemeteries

- 6 Arthurs Creek Cemetery
- 7 Eltham Cemetery
- 8 Hurst Family Cemetery
- 9 Kangaroo Ground Cemetery
- 10 Nillumbik Cemetery
- 11 Queenstown Cemetery

Living in Nillumbik

- 12 Alistair Knox Park

- 13 Arthurs Creek Mechanics Institute
- 14 Christmas Hills Mechanics Institute
- 15 Eltham Justice Precinct
- 16 Flying Squirrel Hotel
- 17 Monash Bridge
- 18 Maroondah Aqueduct, Research
- 19 Plenty Heritage Park
- 20 St Andrews Hotel
- 21 St Andrews School & Wadambuk
- 22 St Margaret's Anglican Church
- 23 Sugarloaf Reservoir

Historic Houses & Museums

- 24 Allwood House
- 25 Andrew Ross Museum
- 26 Edendale Farm
- 27 Ellis Cottage
- 28 Shillinglaw Cottage
- 29 Yarrambat Heritage Museum

Industry

- 30 Batman Tree
- 31 Charnwood
- 32 Golden Mines

- 33 St Andrews Community Market

- 34 Trestle Bridge & Railway

- 35 Union Mine & Diamond Creek Mine

Memorials

- 36 Christmas Hills War Memorial

- 37 Diamond Creek War Memorial

- 38 Eltham Avenue of Honour

- 39 Eltham War Memorial

- 40 Hurstbridge Memorial Park

- 41 Panton Hill Firefighters Memorial Park

- 42 Plenty War Memorial Gates

- 43 Kangaroo Ground War Memorial Park

- 44 Strathewen Bushfire Memorial

- 45 The Blacksmiths' Tree

Walking Trails

- 46 Hurstbridge Heritage Trail

- 47 Gawa Resource Trail

- 48 Smiths Gully-St Andrews Nature History Trail

- 49 Ye Olde Yarrambat Walk

Self Guided Driving Tours

Photographic acknowledgments

Contributors & Links to Historical Societies

Welcome to the land of the Wurundjeri Woiwurrung people.

Nillumbik Shire is within the traditional lands of the *Wurundjeri willam* clan, our clan.

They were among the first to witness the colonial settlement of Port Phillip and the dispossession of our Country. But we survived.

Our heritage places are etched into the Nillumbik landscape. These are the artefact scatters, scarred trees, quarries, stone traps and other cultural places which connect us to our ancestral lives. Our stories of colonial settlement, *Coranderrk* and coming back onto Country is echoed in the hills around us.

You can share our journey by walking along the *Birrarung* and other waterways. This is the route we walked for thousands of years to meet with our neighbours, harvest our food and resources, or hold ceremonies.

On this Country, we follow Bunjil's lore. We protect our land and waterways. We protect our heritage. We ask that you do the same.



The First People of Nillumbik

This is an ancient land with a rich and deep human history stretching back thousands of years. If we are not of Indigenous heritage, it is important to remember that we are here as guests on this land where the first people of Nillumbik, the *Wurundjeri willam*, lived, loved, played, fished and farmed, and that their knowledge of this place is as complete as anything we have seen.

We should know that the places spoken of in the following pages are underpinned by Wurundjeri stories that signify a rich and complex culture that has survived.

The two moieties of the Woiwurrung people are **Bunjil the Wedge-tailed Eagle**, and **Waa the Crow**. Wurundjeri are **Waa**.

In the Dreaming, **Bunjil** is the creation ancestor who created the landscape and the men (*Kulin*), while **Waa** is considered protector of Country and *Kulin* alike.

Pallian the Bat exists in the water and it was he who made life in the oceans, rivers, creeks and created the first women.

The clear imprints of the Wurundjeri are still there for those with the eyes to see.

An ancient *iuk* (eel) trap still exists at the end of an Eltham South road, at a race in *Birrarung* (the Yarra River). This trap fed generations of women, men and children who bent to the water to scoop out their catch. Scar trees remember *Koorong*, bark canoes, pushing out into lagoons.

These *Koorong* carved with greenstone axes from *Wil-im-ee Moor-ring* (Mount William) – a precious item traded into the lands of present-day New South Wales and South Australia. *Murnong* (yam daisies) flower in autumn, recalling harvest. The roasting of the tubers over coals, the pulling apart and swallowing of their sweet flesh.

Listen, if you can, to the dark waters of the lagoon that still endures near the Diamond Creek; they whisper of a time where groups of Wurundjeri would camp there, back when the lagoons were more plentiful, and the fish and birds were many. This place was called *Nillumbik* originating from the Woiwurrung language.

At the time when the first Europeans advanced into the Yarra River valley, the people of the Woiwurrung language group (one of five groups that make up the Kulin Nation) occupied lands bounded by the Werribee River, Mount Macedon, Mount William, Port Phillip Bay and across to Mount Baw Baw.

The Wurundjeri of Nillumbik lived in family groups, in their living areas built beside waterways and in the forests and grasslands. They had no idea that they were making history just by living on this land in the way their ancestors had always done. They had no idea of what was to come.

If you ever chance across a special place while walking, say it is in autumn when the air is soft and the smell of eucalypt fills you, think on the Wurundjeri and how they may have seen it. Think about a man such as William Barak, son of Bebejan and Tooterie, the last broadly recognised *Ngurungaeta* (leader) of the Wurundjeri people who, as a boy, witnessed the arrival of Europeans and the taking of his lands by John Batman in 1835. Know that Barak went on to become a great leader, thinker and documentarian of the Wurundjeri.

Think on Annie Borate, his younger sister, born on the Plenty River. Think about her marriage outside her people into the Kurnai Brataualung tribe of Gippsland in exchange for Lizzie, William Barak's first wife; and the significance of this new alliance to counter the threat of European colonisation. Remember that Borate's descendants live among us – that they survived.

In 2012, the title to *Wil-im-ee Moor-ring* (Mount William) was handed back to the Wurundjeri people by the then Federal Indigenous Affairs Minister, Jenny Macklin. In that same year members of the *Wurundjeri Woi Wurrung Cultural Heritage Aboriginal Corporation* gathered greenstone from the *Wil-im-ee Moor-ring* quarry.

This greenstone was carefully crafted into axe-heads, which were bound to silver and black wattle handles with pastes made from those same trees. These axes were carried by Wurundjeri to Plenty Gorge National Park. There, a *Be-al* (river red gum) was scarred and from that tree a *Koorong* was released.

Map of Heritage Sites

Arts & Culture

- 1 Victorian Artist Supplies
- 2 Dunmoochin
- 3 Eltham Library
- 4 Montsalvat
- 5 Moor-rul Viewing Platform

Local Cemeteries

- 6 Arthurs Creek Cemetery
- 7 Eltham Cemetery
- 8 Hurst Family Cemetery
- 9 Kangaroo Ground Cemetery
- 10 Nillumbik Cemetery
- 11 Queenstown Cemetery

Living in Nillumbik

- 12 Alistair Knox Park
- 13 Arthurs Creek Mechanics Institute
- 14 Christmas Hills Mechanics Institute
- 15 Eltham Justice Precinct
- 16 Flying Squirrel Hotel
- 17 Monash Bridge
- 18 Maroondah Aqueduct, Research
- 19 Plenty Heritage Park
- 20 St Andrews Hotel
- 21 St Andrews School & Wadambuk
- 22 St Margaret's Anglican Church
- 23 Sugarloaf Reservoir

Historic Houses & Museums

- 24 Allwood House
- 25 Andrew Ross Museum
- 26 Edendale Farm
- 27 Ellis Cottage
- 28 Shillinglaw Cottage
- 29 Yarrambat Heritage Museum

Industry

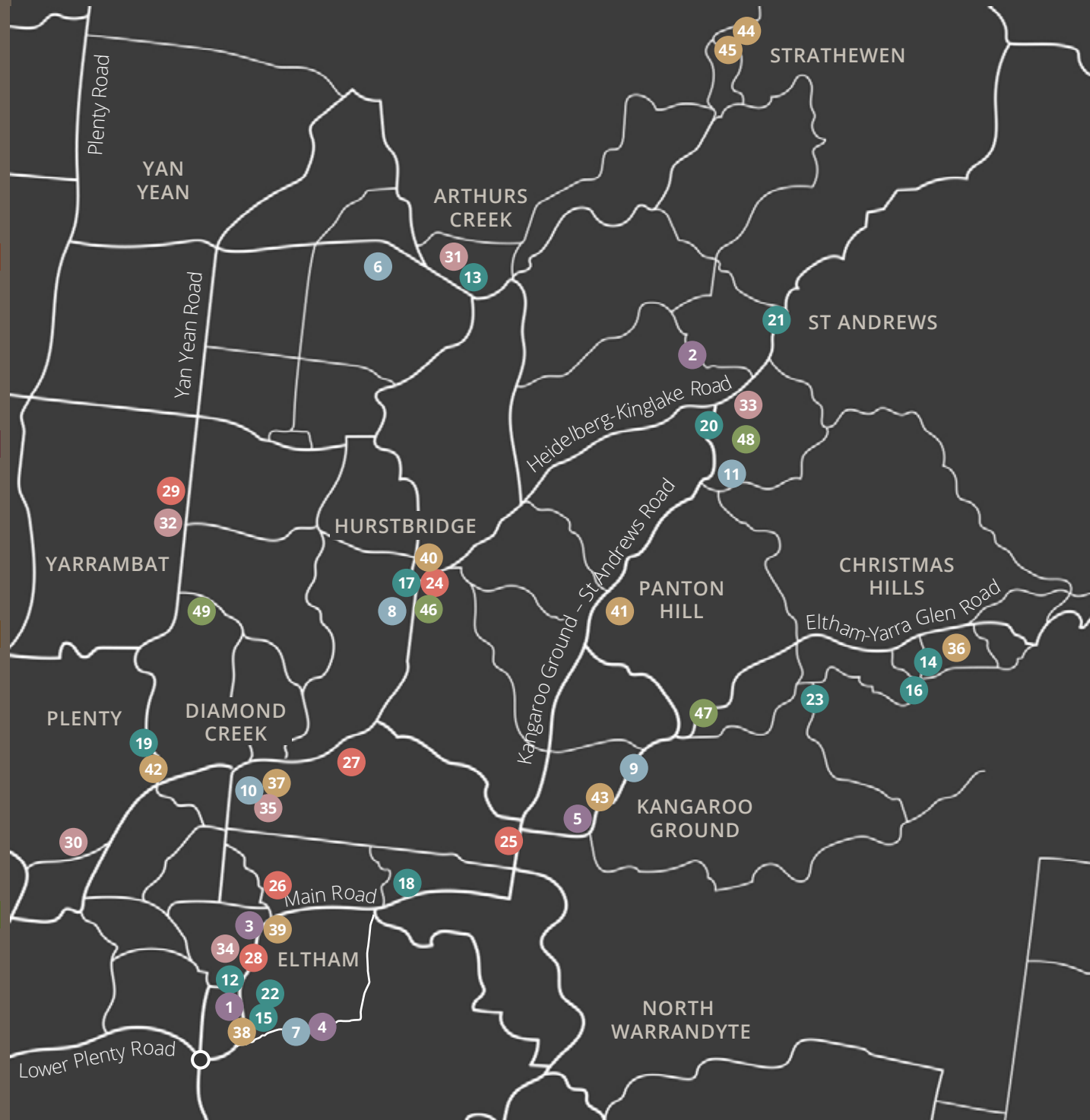
- 30 Batman Tree
- 31 Charnwood
- 32 Golden Mines
- 33 St Andrews Community Market
- 34 Trestle Bridge & Railway
- 35 Union Mine & Diamond Creek Mine

Memorials

- 36 Christmas Hills War Memorial
- 37 Diamond Creek War Memorial
- 38 Eltham Avenue of Honour
- 39 Eltham War Memorial
- 40 Hurstbridge Memorial Park
- 41 Panton Hill Firefighters Memorial Park
- 42 Plenty War Memorial Gates
- 43 Kangaroo Ground War Memorial Park
- 44 Strathewen Bushfire Memorial
- 45 The Blacksmiths' Tree

Walking Trails

- 46 Hurstbridge Heritage Trail
- 47 Gawa Resource Trail
- 48 Smiths Gully-St Andrews Trail
- 49 Ye Olde Yarrambat Walk



Arts & Culture

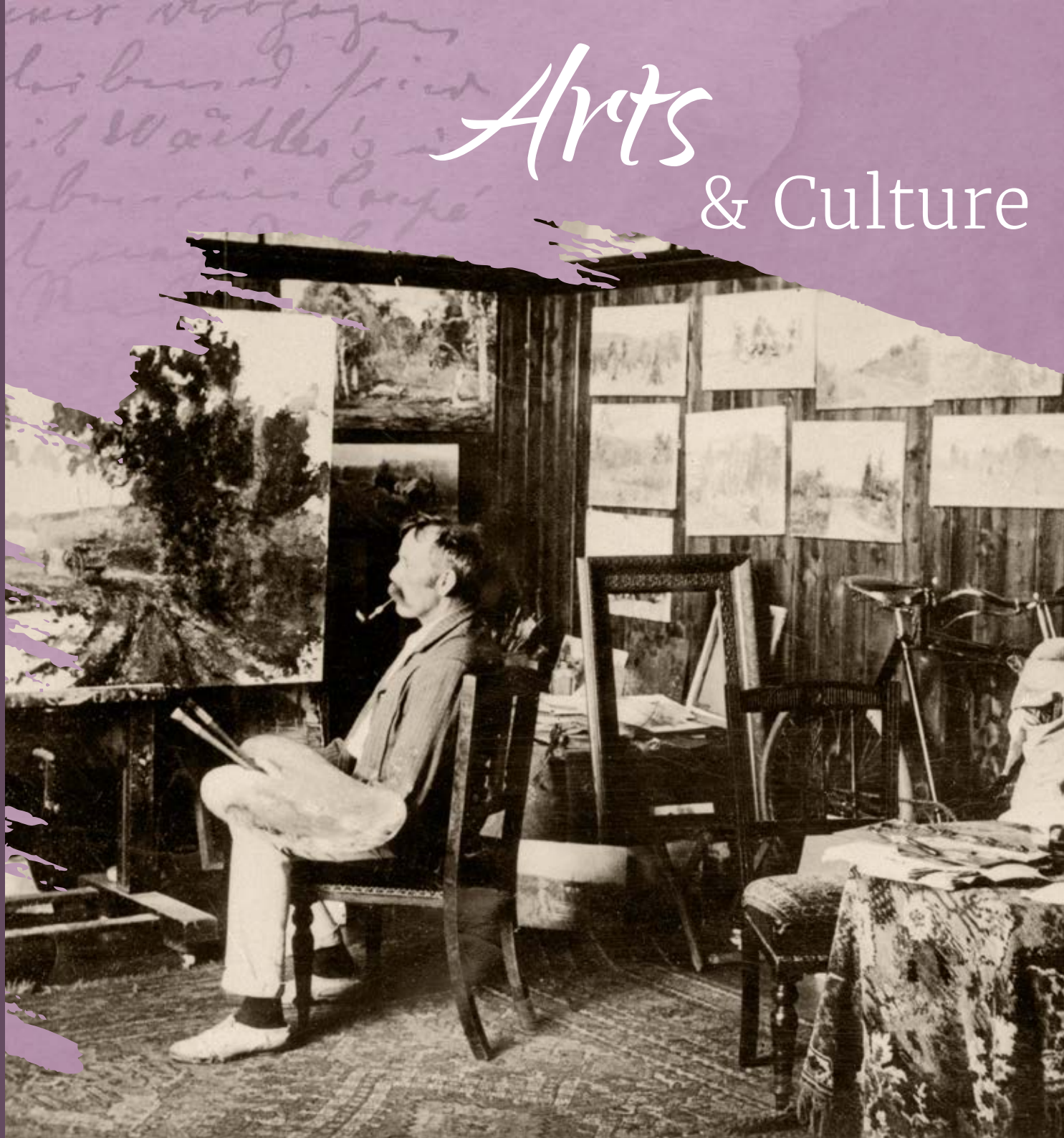
1 Victorian Artists Supplies

2 Dunmoochin

3 Eltham Library

4 Montsalvat

5 Moor-rul Viewing Platform



1

Victorian Artists Supplies

715 Main Rd, Eltham

This building was constructed in the 1970s as a residence by Saskia Killingbeck who was associated with Montsalvat.

Operating as an art supply shop since 1987, *Victorian Artists Supplies* is an institution among Nillumbik artists, and serves as an information hub for arts and cultural activities in the Shire.



Open 9am–5.30pm weekdays,
9am–2pm Saturday



Dunmoochin

105 Barreenong Rd, Cottles Bridge

In 1951 Clifton Pugh AO and a group of artists established *Dunmoochin*, one of the first artistic communes in Australia.

Affiliated artists include Rick Amor, Mirka Mora, John Perceval and Fred Williams. The *Dunmoochin Foundation* was established in 1989 as a residential retreat for artists.



Open by appointment only



3

Eltham Library

Panther Place, Eltham

Construction of the heritage listed mudbrick library began in 1993 with funding from the *Eltham Shire Council* and a Federal Government Local Capital Works Program grant. It was opened in May 1994.

It was designed by Gregory Burgess and won the *Royal Australian Institute of Architects' Institutional Architecture Award* in 1995. The building reflects its parkland setting and contains several interesting aspects in form, features and materials used, both externally and internally.

It is managed by *Yarra Plenty Regional Library*.



Open daily



Montsalvat

7 Hillcrest Ave, Eltham

Founded in 1934 by Justus Jørgensen, Montsalvat, is Australia's oldest artists' community. Its unique grounds and buildings continue to foster a community that celebrates the arts in all its forms.

Artists, intellectuals, tradespeople and artisans associated with Montsalvat include: Clifton Pugh, Gordon Ford and Joe Hannan, Betty Roland, Matcham Skipper, Sue Vanderkelen, Helen Lempriere, John Busst and Myra Skipper, Percy Leason, Leonard French and Albert Tucker.



Open daily 9am – 5pm
admission fee



5

Moor-rul Viewing Platform

Eltham–Yarra Glen Road

Moor-rul was named with the consent of the Wurundjeri Elders. It was the name given in 1840 by Wurundjeri Elder *Kuburu* when describing the names of the mountains surrounding Yarra Glen.

The platform is designed, when viewed from below to represent *Bunjil*, the Eaglehawk, gliding with wings outstretched.



Open daily



Local Cemeteries

6 Arthurs Creek Cemetery

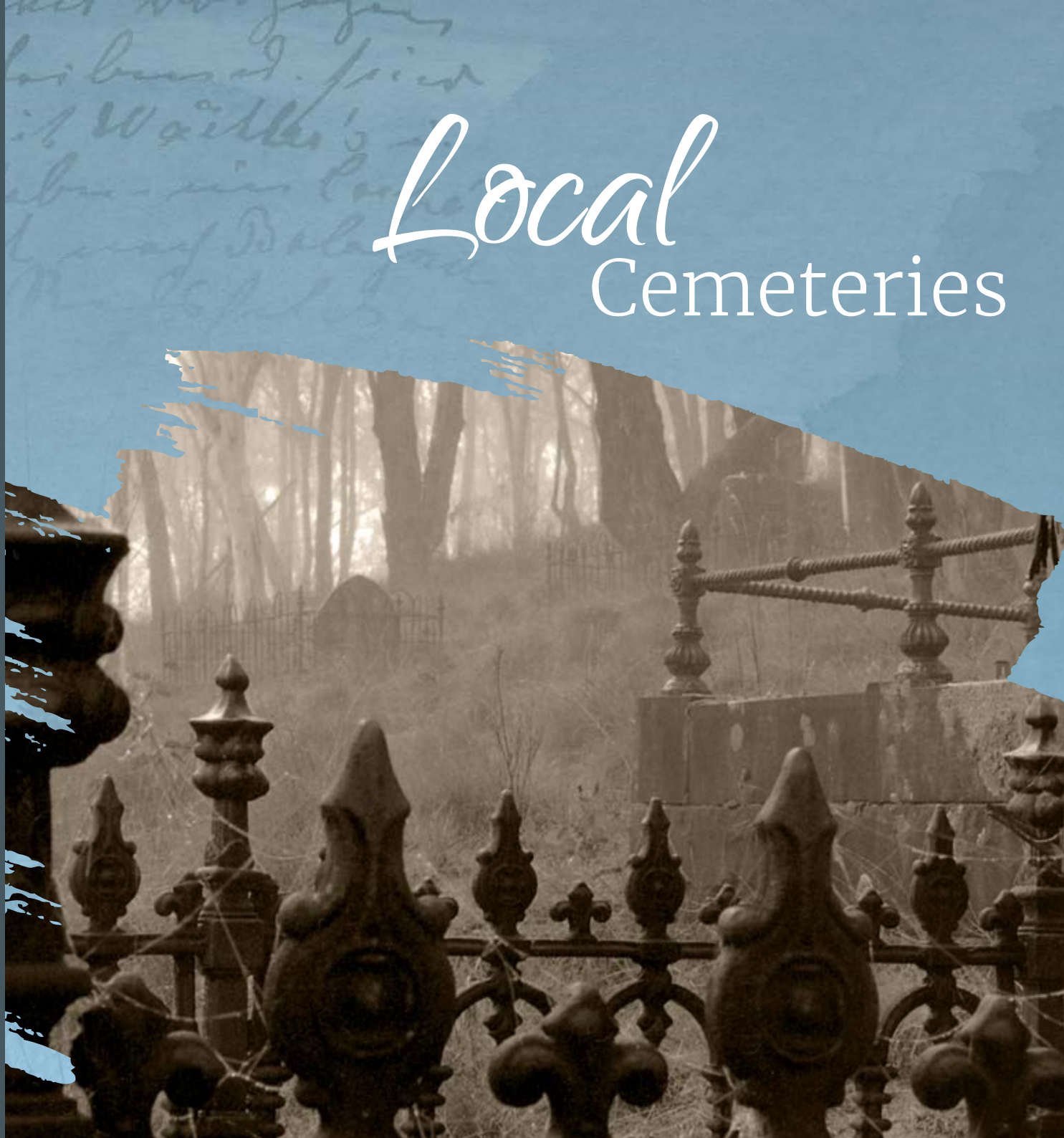
7 Eltham Cemetery

8 Hurst Family Cemetery

9 Kangaroo Ground Cemetery

10 Nillumbik Cemetery

11 Queenstown Cemetery



Arthurs Creek

Arthurs Creek Rd, Arthurs Creek

Arthurs Creek Cemetery was originally a private cemetery for the squatter Reid family.

The first person buried there was Agnes Reid in 1847. For many years, the cemetery was referred to locally as the *Hazel Glen Cemetery*. It was gazetted in 1867 and known as *Linton Cemetery* until 1926 when it became *Arthurs Creek Public Cemetery*.



7

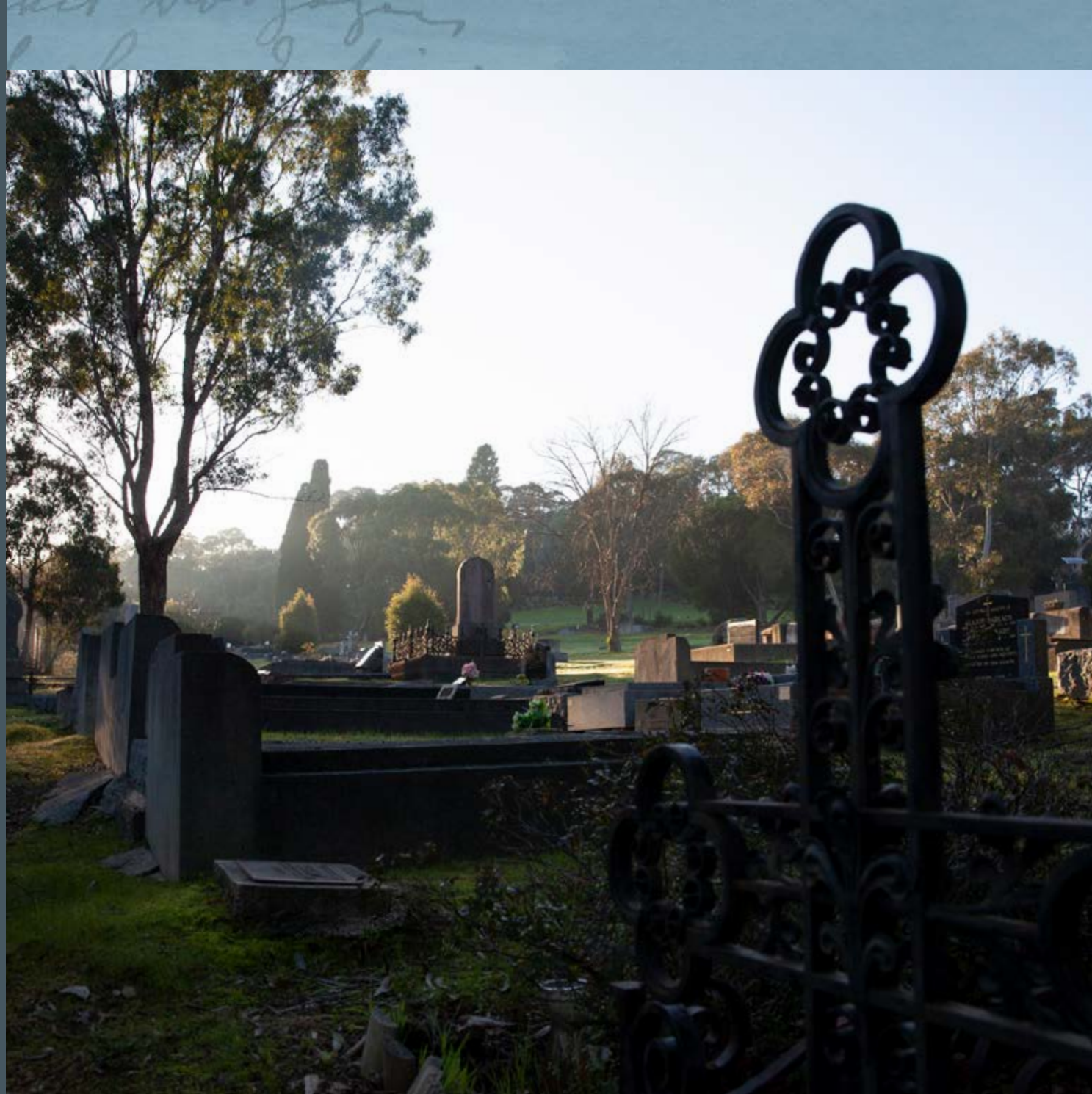
Eltham

Mt Pleasant Rd, Eltham

The Cemetery was established in 1858 by the *Eltham Cemetery Trust*.

The working cemetery is set in natural bushland adjoining Montsalvat and is the resting place of many pioneering and well-known locals including Sir William Irvine, a former Premier and Chief Justice of Victoria.

Sculptures that sit throughout the cemetery grounds are by local artists, commissioned by the *Eltham Cemetery Trust*. They are part of the Trust's vision to offer the community a fresh and unique relationship to the cemetery.

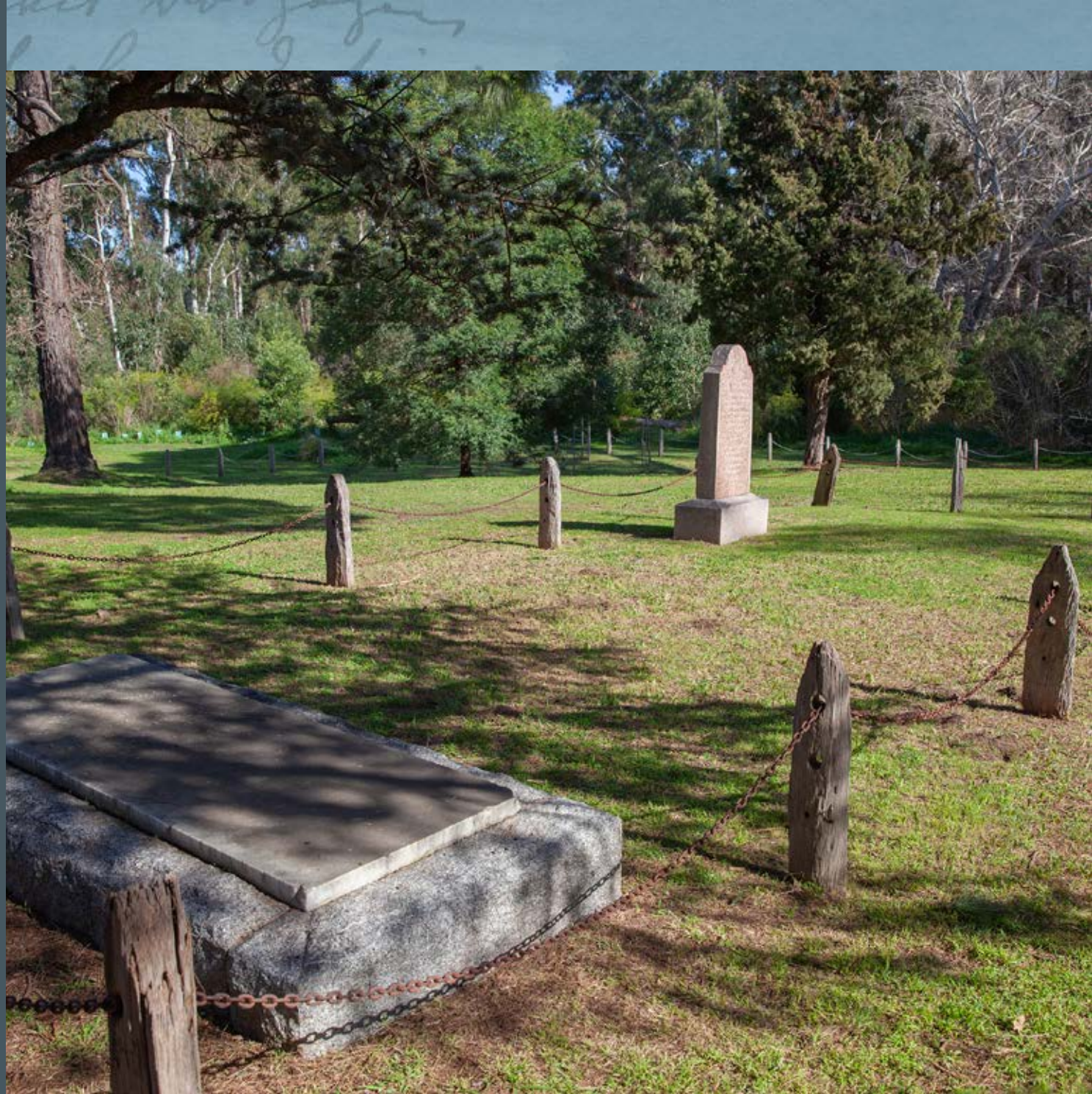


Hurst Family

Graysharps Rd, Hurstbridge

In 1866 the manager of the *Allwood* cattle run, Henry Hurst, died and was buried on the run. Friends and neighbours donated money to the Hurst family for his gravestone.

His father, Robert Hurst, purchased the *Allwood* run in 1868 and Henry's burial site became the *Hurst Family Cemetery*. There are nine Hurst family member burials recorded; the last was that of Frederick Hurst (Henry's brother) in 1927. Since then several other family members have had their ashes scattered there.



Kangaroo Ground

545 Eltham-Yarra Glen Rd,
Kangaroo Ground

The Kangaroo Ground Cemetery is the oldest working cemetery outside of Melbourne.

The first person buried there was nine year old Judith Furphy in 1851. Judith was the younger sister of John and Joseph Furphy. John was the maker of the popular Furphy water-cart, and Joseph (aka Tom Collins) wrote the novel, *Such is Life*.



Nillumbik

35 Main St, Diamond Creek

Established in 1867, the Nillumbik Cemetery contains the graves of many of the area's pioneering families.

Also buried in the cemetery are football legend, Gordon Coventry, and literary icon, Alan Marshall, whose grave features a large rock marker. The cemetery is still operational.



11

Queenstown

70 Smiths Gully Rd, Smiths Gully

Queenstown Cemetery is a pioneer cemetery established during the gold rush of the 1850s.

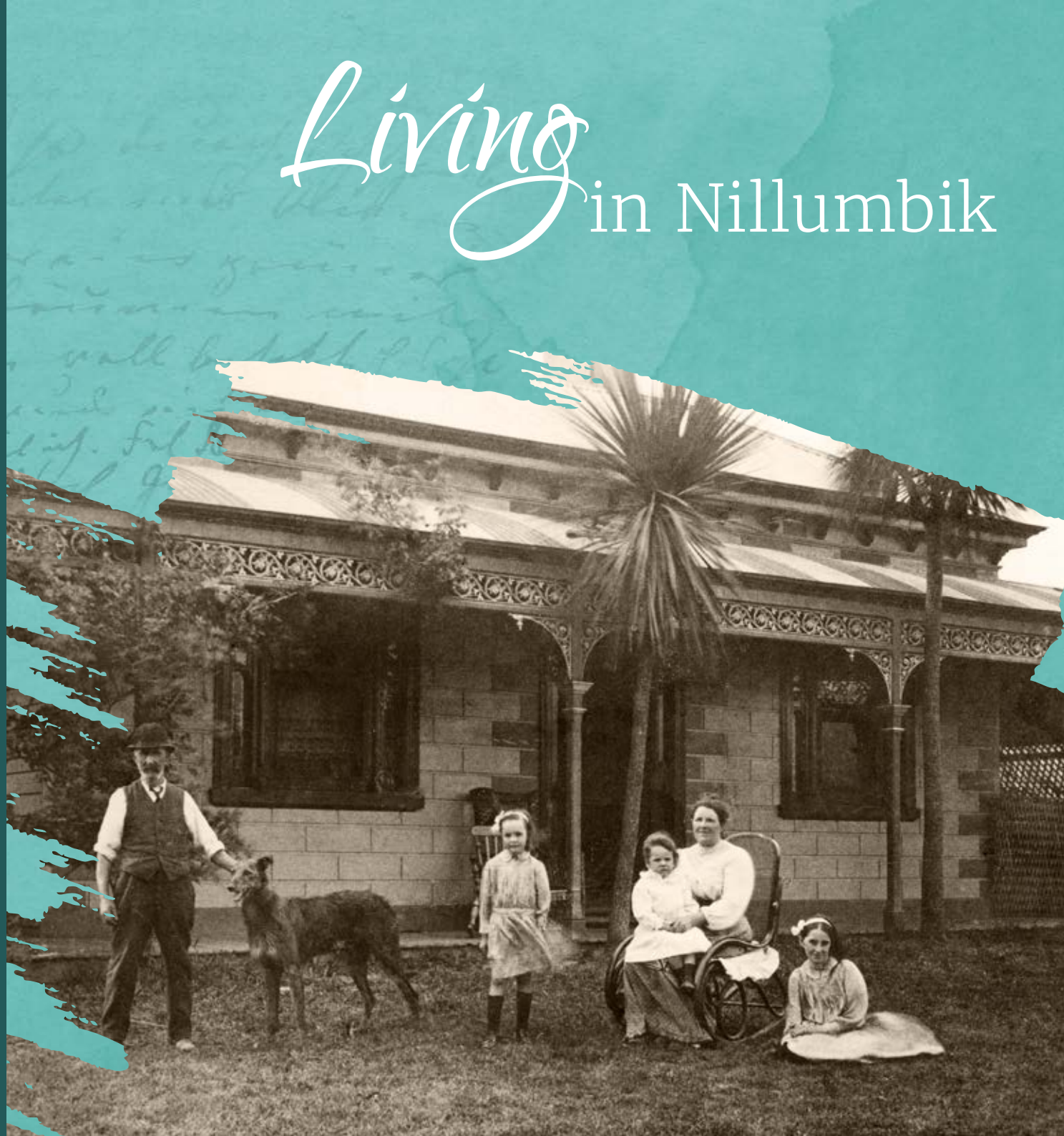
It is located at the site of the first mining village of the *Caledonia Diggings*. It is estimated that more than 380 people have been buried at the cemetery but no plan or map of the area has been found.

The last burial took place in 1981. The cemetery includes numerous unmarked graves of Chinese miners.



Living in Nillumbik

- 12 Alistair Knox Park
- 13 Arthurs Creek Mechanics Institute
- 14 Christmas Hills Mechanics Institute
- 15 Eltham Justice Precinct
- 16 Flying Squirrel Hotel
- 17 Monash Bridge
- 18 Maroondah Aqueduct, Research
- 19 Plenty Heritage Park
- 20 St Andrews Hotel
- 21 St Andrews School & Wadambuk
- 22 St Margaret's Anglican Church
- 23 Sugarloaf Reservoir



12

Alistair Knox Park

829 Main Rd, Eltham

The park is named after Alistair Knox, a key figure of the Australian modern mudbrick and environmental building movement.

The park and the lake within were designed by four of the major forces in the urban bush landscape movement: *Gordon Ford, Peter Glass, Alistair Knox* and *Ivan Stranger*.

The hills and lakes are part of a man-made landscape skilfully blended with the natural environment. The park has a National Trust landscape classification and is protected by a Heritage Overlay.



'Classical Landscape' by Cliff Burt



13

Arthurs Creek Mechanics Institute

906 Arthurs Creek Rd,
Arthurs Creek

The Arthurs Creek Mechanics' Institute and Free Library opened on 2 September 1887 with a grand concert and ball. The occasion attracted 40 couples who danced to a program of 21 dances until after five the following morning.

The hall has been a focal point for many different organisations over the years including the *Arthur's Creek Brass Band* and the *Arthur's Creek Fruit Growers Association*. The building continues to be used as a community venue for local events.



Open for bookings



14

Christmas Hills Mechanics Institute

787 Ridge Rd, Christmas Hills

The Christmas Hills Mechanics' Institute Hall and Free Library was built in 1877, on the site of what is now the sailing club on Ridge Road. In November 1893 the hall mysteriously burnt to the ground.

The community was keen to rebuild the hall but there were two differing views about where the new hall should be located. The two camps couldn't agree and one group started rebuilding the hall on the original site. The walls were up and the roof pitched, when one night the other group stole the roof. Eventually, the groups agreed to build the hall halfway between the two sites. The new hall was opened in 1895 with a ball and a concert.



Open for bookings



15

Eltham Justice Precinct

728 Main Rd, Eltham

Eltham Courthouse was built in 1860 and is one of only two intact examples in Victoria of a courthouse with a simple projecting entry design.

The courthouse and neighbouring police residence (1859) were built in response to the need for a lawful presence, given the population of 1000, and the numbers of people passing through to the goldmines. Police duties were transferred in 1961 to a refurbished house in Pryor Street and the courthouse closed in 1984. The buildings are used by various community groups including *Nillumbik U3A* and the *Eltham District Historical Society*.



Open by appointment



16

Flying Squirrel Hotel

SE corner Ridge & Muir Roads,
Christmas Hills

within grounds of Sugarloaf Reservoir

With the discovery of gold in the late 1850s, the bush track through Christmas Hills became one of the busiest in the colony.

At one point in time there were 13 hotels between the Diamond Creek Bridge at Eltham, and the Yarra River at Yarra Glen. The Flying Squirrel Hotel was built by Robert and Martha Lorimer in 1865, and served as the area's first post office. The hotel was destroyed by a fire.



Site of the Flying Squirrel Hotel, in the Sugarloaf Reserve



The *Flying Squirrel Hotel* was thought to be so named because the early settlers thought the possums they saw leaping through the trees were squirrels.

17

Monash Bridge

Hurstbridge–Arthurs Creek Rd,
Hurstbridge

The Monash Bridge was the third bridge in the area built to cross the Diamond Creek; replacing a wooden trestle bridge built in 1895 by Jack McDonald.

The bridge was designed and constructed by the *Reinforced Concrete and Monier Pipe Construction Company* of which Sir John Monash was a partner. It was funded by the Shires of Eltham, Heidelberg and Whittlesea. The bridge was officially opened by Jas Rouget MLA (*Member of the Legislative Assembly*), in November 1917.



Opening of the Monash Bridge, 3 November 1917



18

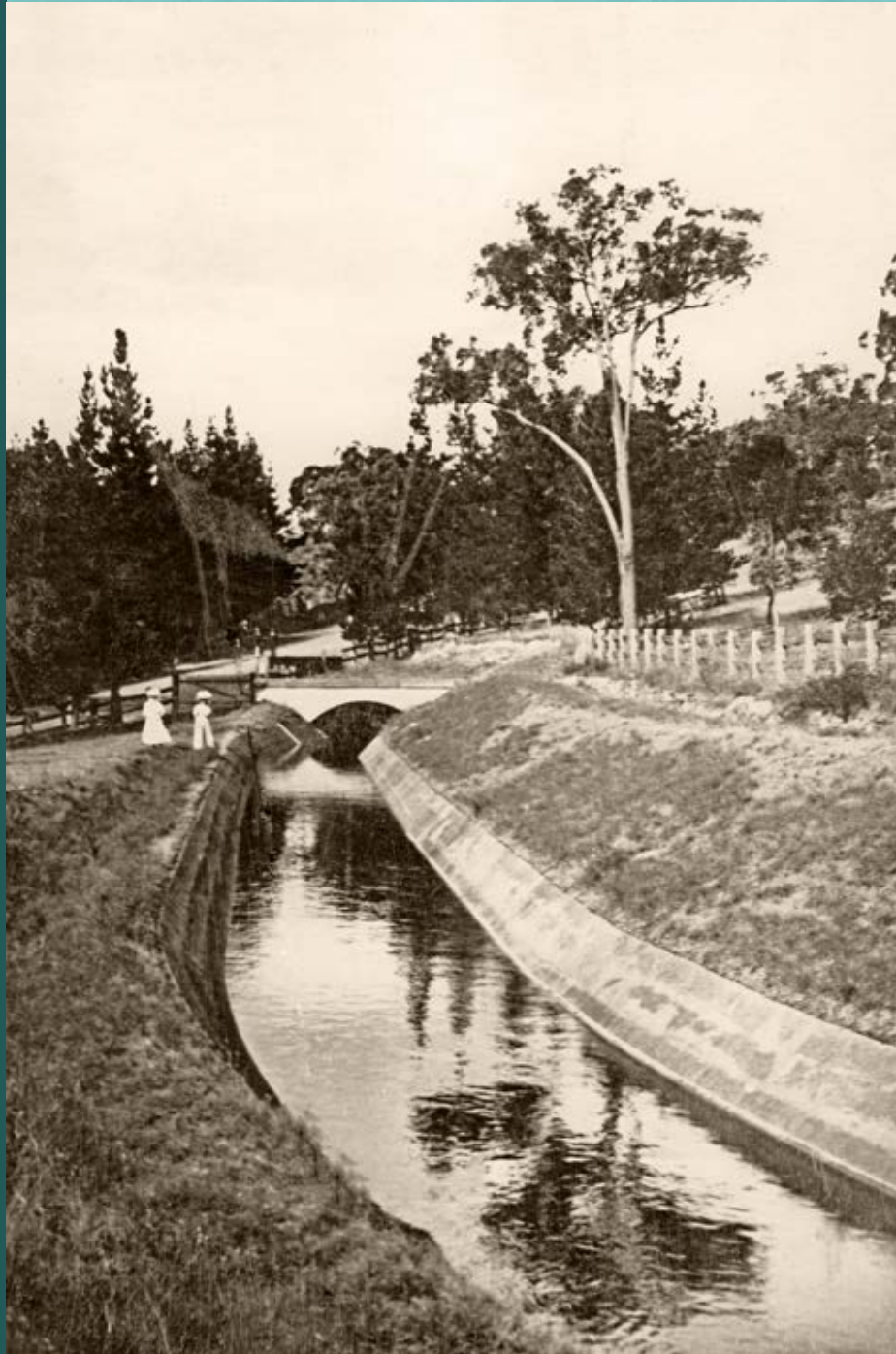
Maroondah Aqueduct, Research

Main Rd, Research

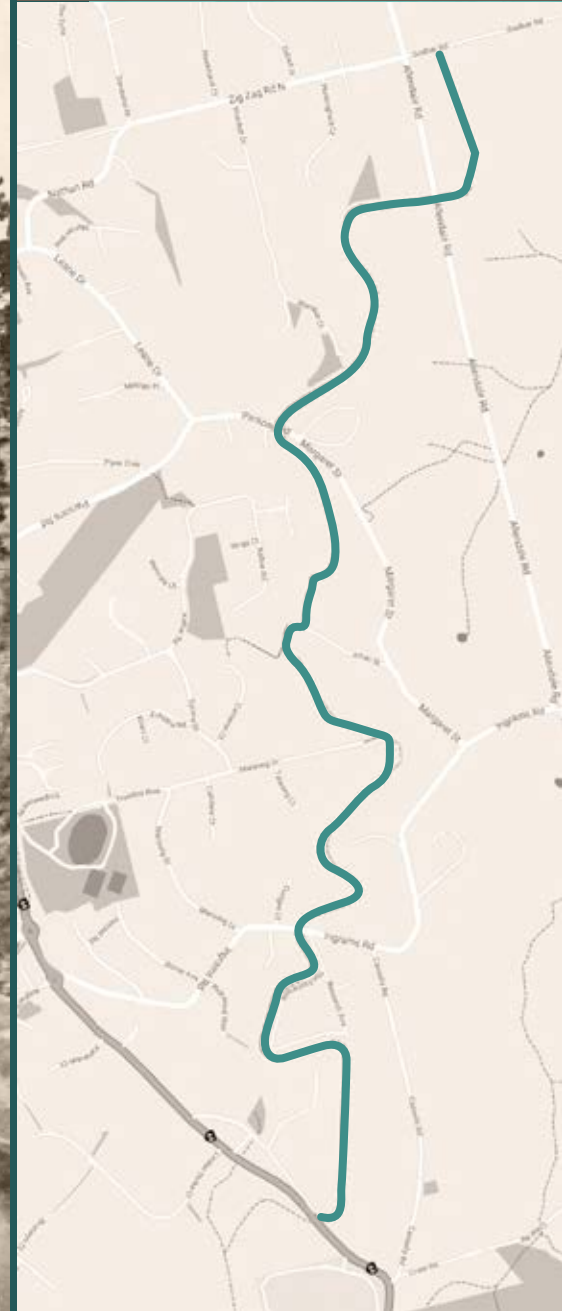
For nearly 100 years the aqueduct supplied water to Melbourne, firstly from the Watts River near Healesville and later the Maroondah Reservoir.

Construction of the aqueduct began in August 1886. The system consisted of 25 miles of open cement and brick-lined channels. It was officially opened by the Governor of Victoria, the Earl of Hopetoun in February 1891. The system was decommissioned and replaced by underground pipes in 1978.

Today the unused channels remain largely intact and the access track is a popular walking and cycling path.



Aqueduct Trail: 4km in length between
Allendale Rd, Eltham and Main Rd, Research



Plenty Heritage Park

109–115 Yan Yean Rd, Plenty

Plenty Heritage Park is made up of a small area of parkland, the Plenty CFA building, the *Plenty Community Hall*, and the relocated *Plenty Methodist Church*.

The church was built by the people of Plenty during the 1920's and originally sat at the corner of River Avenue and Yan Yean Road. It was relocated to Plenty Heritage Park in 2018 due to the Yan Yean Road reconstruction and now serves as the home of the *Plenty Historical Society*.

Plenty Community Hall opened in 1931 and was a popular venue for dances.



Open for bookings



St Andrews Hotel

79 Burns St, St Andrews

The hotel is a significant entity in the town and has been the venue for entertainment and important functions.

The *St Andrews Rural Fire Brigade* recorded its first meeting at the hotel in 1916 and election polls were held in the hotel's Lodge Room in 1888.

Known currently as a venue for live music, the hotel also, in its early days, coroner inquests were held there and it doubled as the local morgue.

There is also rumour the hotel was used as a brothel, although this claim has never been confirmed... or denied.



Open daily from 11am



21

St Andrews School & Wadambuk Community Centre

35 Caledonia St, St Andrews

In 1858 the *Caledonia Common School no. 128* was opened in Smiths Gully. The school and residence was built in 1875 and relocated to Queenstown in 1882.

In 1983 a new school was built and the old school building became the *St Andrews Community Centre (SACC)*. After the 2009 bushfires SACC was established as a relief centre. With funds from the *Victorian Bushfire Appeal*, SACC was redesigned by architect, Gregory Burgess, and reopened as *Wadambuk Community Centre* in 2015. The building is also the home of *St Andrews Historical Society*.



Open for bookings



22

St Margaret's Anglican Church

79–81 Pitt St, Eltham

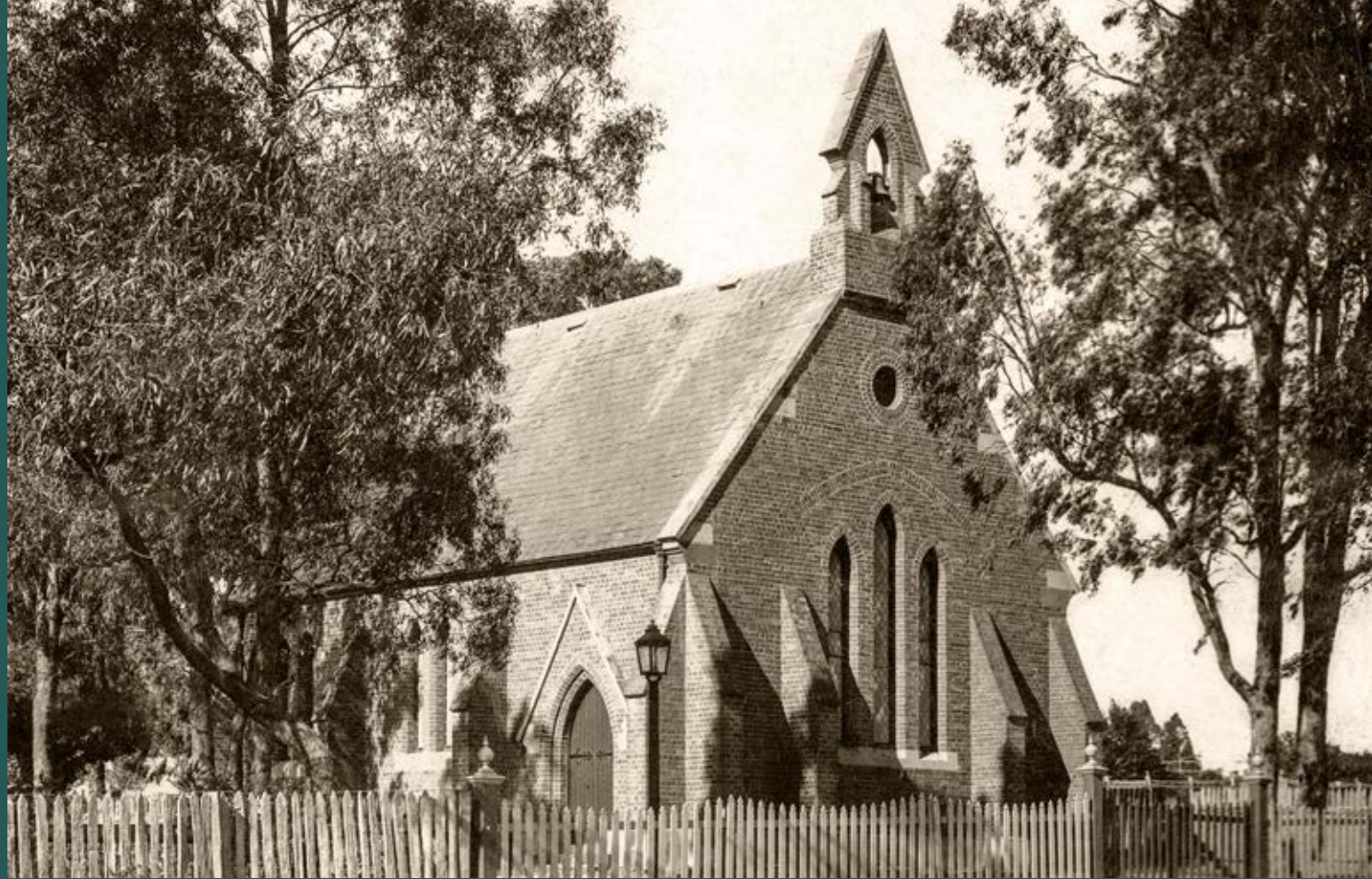
Designed by architect, Nathaniel Billings and built by George Stebbing, St Margaret's is an early example of polychrome brick work.

The church building was opened and dedicated in 1861 and consecrated in 1876.

A renovation in 2015 included increasing the size of the worship space, the addition of new technology, extra seating and extra amenities in the adjoining hall.



Open for regular services and bookings



Sugarloaf Reservoir

Simpson Rd, Christmas Hills

Sugarloaf Reservoir was completed in 1981 to supplement Melbourne's domestic water supply.

It is fed by the Maroondah Aqueduct and the Yarra River. The site is a popular recreational venue for the local sailing club, canoers and anglers.

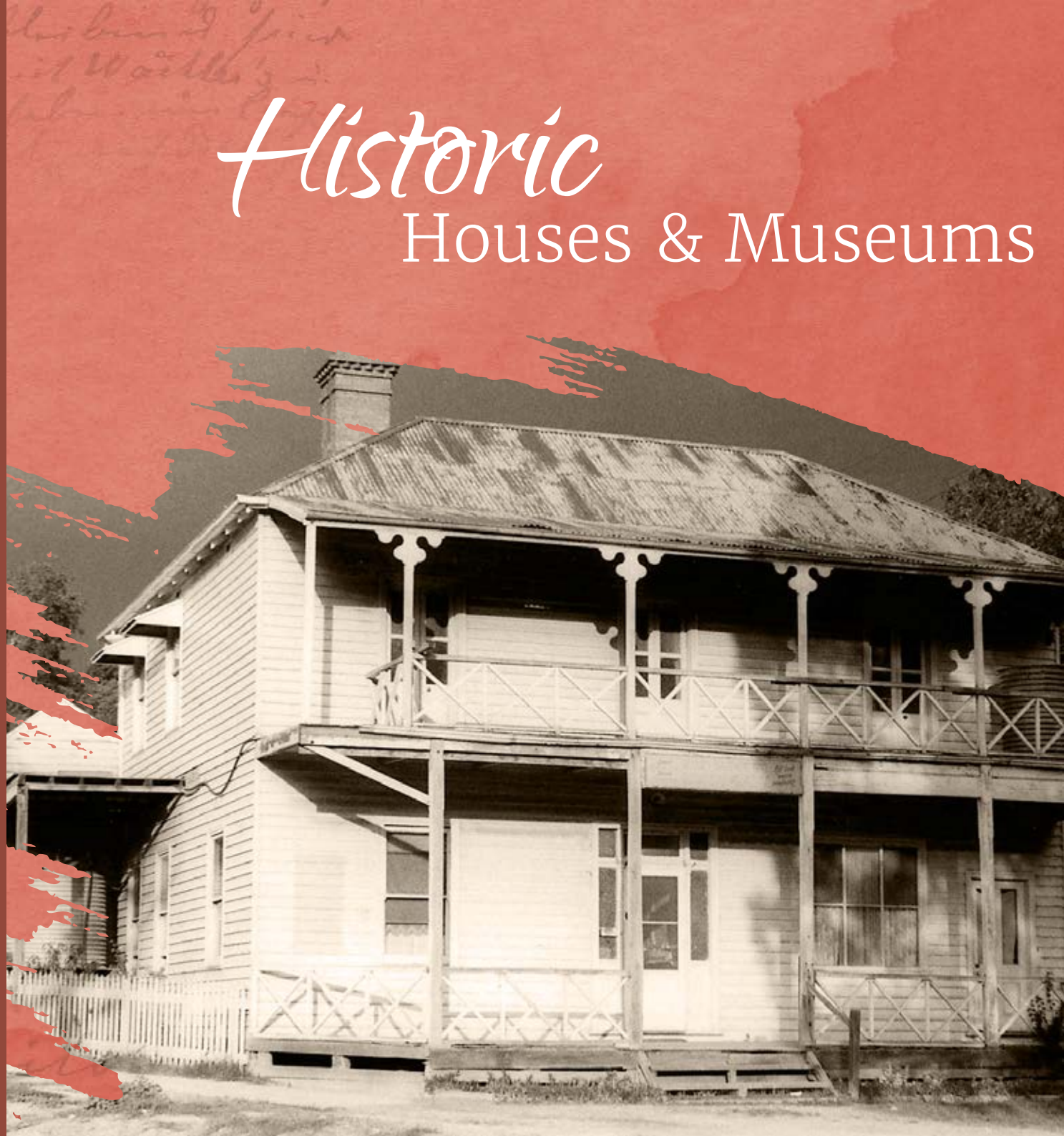


Open daily from 8.30am



Historic Houses & Museums

- 24 Allwood House
- 25 Andrew Ross Museum
- 26 Edendale Farm
- 27 Ellis Cottage
- 28 Shillinglaw Cottage
- 29 Yarrambat Heritage Museum



Allwood House

901 Main Rd, Hurstbridge

In 1894 *Allwood House*, a Victorian weatherboard dwelling, was moved to its present site and refurbished by local builder and orchardist, Charles Verso, for the Hurst family.

In 1897 it became the home of Frances Ellen Hurst and her husband William (Bill) Gray. Bill Gray developed the extensive *Allwood Nurseries* and exported fruit trees playing an important role in the area's fruit-growing industry.

Allwood House was purchased by Eltham Shire Council in 1994 and has since been used as a neighbourhood house.



Open for courses and bookings



25

Andrew Ross Museum

Eltham–Yarra Gled Rd,
Kangaroo Ground
opposite the General Store

The *Andrew Ross Museum* was founded in 1993. It is located in the original heritage-listed teachers' residence of *Kangaroo Ground Primary School*.

In 1851 the school's first headmaster, Andrew Ross, was appointed. Over twenty years Ross established the *Evelyn Commercial, Agricultural and Industrial School*, the *Kangaroo Ground Post Office Store and Hotel*, and the *Evelyn Observer* newspaper. The museum contains a large photographic collection and numerous document displays.



Open Thurs 10am–noon,
Sun by appointment



Edendale Farm

30 Gastons Rd, Eltham

Edendale Farm was originally part of a 51 acre site purchased by Henry Stooke in 1852.

Thomas Cool, manager of the *Victorian Coffee Palace*, purchased the site in 1896 and built the homestead in the same year. Eltham Shire Council purchased the property in 1970 and established an animal pound and nursery. In the late 1980s the site became a community farm. In 2000 it was transformed into a community environmental education centre and indigenous plant nursery.



Open daily 9.30am – 4.30pm



Ellis Cottage

10 Nillumbik Square,
Diamond Creek
access via *Memory Lane*

Ellis Cottage was built out of uncut local stone circa 1865 by William Ellis, who with his nephew Nathaniel Ellis, established a model farm of 150 acres on the site known as *Ellis Park*.

In 1850 William Ellis purchased a large portion of land between Diamond Creek and Wattle Glen. A successful farmer and businessman, Ellis also purchased land in Yarra Glen, Diamond Creek, Woodstock and Greensborough. The cottage and grounds houses the *Nillumbik Historical Society's* collection of historic photographs and documents of pioneering families from the area.



Open 2pm–4pm
first Sun of the month except January



28

Shillinglaw Cottage

4 Panther Place, Eltham

Shillinglaw Cottage was built in the 1860s by Thomas Cochrane, in conjunction with George Stebbing, local pioneer builder.

Stebbing was responsible for building a number of other important buildings in the area, including the *Uniting Church* and *St Margaret's Church*.

Shillinglaw Cottage is constructed from hand-made bricks using an unusual design featuring burnt header bricks throughout the façade. It was originally built on the site of the former Eltham Shire offices but was relocated and rebuilt on its present site in 1964-65.



Open daily from 8.30am
for breakfast & lunch



29

Yarrambat Heritage Museum

Yarrambat Park,
Yan Yean Rd, Yarrambat

The *Yarrambat Heritage Museum* is located at Yarrambat Park on the site of the 150 year old *Len Young Wool Shed*.

The museum contains wool bailing equipment, an operational historic gold-mine battery and the first classroom from *Yarrambat Primary School*.

The *Yarrambat Historical Society* hosts an annual Open Day in October.



Open by appointment



Yarrambat Historical Society

Industry

in Nillumbik

- 30 Batman Tree
- 31 Charnwood
- 32 Golden Mines
- 33 St Andrews Market
- 34 Trestle Bridge & Railway
- 35 Union & Diamond Creek Mines



Batman Tree

Access from laneway off Corowa Crescent, opposite Warool Court, turn right along Plenty River

In 1841, the Flintoff brothers bought several apple trees from the estate of Melbourne pioneer, John Batman for £1 each.

The Flintoffs then started their own orchard on their Greensborough property.

The Batman tree was planted on its current site in the early 1840s. It is believed to be the last surviving apple tree from Batman's orchard.



Image of the then 72-year-old apple tree from the Leader Newspaper, 9th April 1910



Charnwood

Arthurs Creek

Charles Draper was a pioneer fruit grower in the district. In 1862 he was one of the first selectors to acquire land in Arthurs Creek, which he named *Charnwood* after Leicestershire, England where he grew up.

In the 1880s the Arthurs Creek district became a major source of Melbourne's fruit supply. Around 1870, in conjunction with other committee members of the *Horticultural Society of Victoria*, Draper introduced the Jonathan variety of apple from America under the name of *Marstons Red Winter*.



Homestead and garden at Charnwood, 1922



32

Golden Mines

Yan Yean Rd, Yarrambat

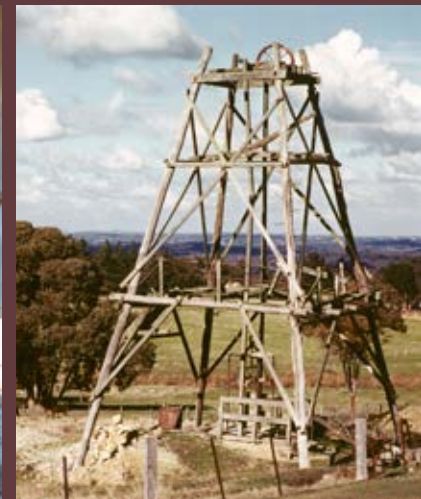
Mining activities in the area date back to the late 1800s when hundreds of Chinese miners searched for gold on the banks of Plenty River.

One popular area was known as *Smuggler's Gully*, which is now part of Plenty Gorge Park. During the 1940s–50s there were four goldmines in Yarrambat: *Golden Crown*, *Golden King*, *Golden Stairs* and *Golden Gate*.

The *Golden King* mine was the last to close in 1984.



Golden Stairs miners, 1946



33

St Andrews Community Market

Kangaroo Ground–St Andrews Rd,
St Andrews

Legend has it that the market was started when local musician Wally Johnson, co-writer of the folk song *Give Me A Home Among the Gum Trees*, walked across the road from the St Andrews Hotel to busk outside the community hall.

Since 1971, the market has offered alternative culture, crafts, art and accessories as well as organic vegetables and food. The market runs most Saturdays and at its busiest times can have more than 100 stalls and attract 1000 people.



Open 9am–2pm Sat, except fire ban days



34

Trestle Bridge & Railway

Panther Place, Eltham

The trestle rail bridge was built in 1901-02 and is the only railway bridge of predominantly timber construction still in use as part of Melbourne's metropolitan railway network.

The train line was extended to Hurstbridge in 1912 mainly due to the needs of the fruit growing industry which was rapidly expanding at the time.



Eltham Trestle Bridge, 1981 The Shire of Eltham Office in background



Union Mine & Diamond Creek Mine

Fraser St, Diamond Creek

In 1862 gold was discovered in Diamond Creek on the top of Fraser Street on land owned by Dr Phipps.

In 1868 a shaft was sunk from the top of the hill (*Diamond Creek Mine*) and mining also commenced at the bottom of the hill (*Union Mine*). Over 50 years the mines; run as separate companies, and together by *Diamond Creek Gold Mining Company*; experienced both success and failure. At the mine's peak the shaft reached a depth of 350 metres, employed 200 men in continuous shifts and raised gold to the today's equivalent value of \$2,000,000 a year. In 1915 a fire burnt out the workings of the Diamond Creek Mine and also affected the Union mine's infrastructure.



Diamond Creek Mine with single boiler, 1890



36 Christmas Hills War Memorial

37 Diamond Creek War Memorial

38 Eltham Avenue of Honour

39 Eltham War Memorial

40 Hurstbridge Memorial Park

41 Panton Hill Firefighters Memorial Park

42 Plenty War Memorial Gates

43 Kangaroo Ground War Memorial Park

44 Strathewen Bushfire Memorial

45 The Blacksmiths' Tree

Memorials in Nillumbik



36

Christmas Hills War Memorial

Cnr. Ridge Rd. & Eltham-Yarra
Glen Rd, Christmas Hills

The memorial is a concrete obelisk unveiled in 1921 and funded by donations from the local community.

Ten men from Christmas Hills served in World War One: two were killed in action and most who returned suffered from their injuries for the rest of their lives. The memorial was renovated and new interpretive signage installed in 2015 with funding from the Australian Government's ANZAC Centenary Local Grants Program.



37

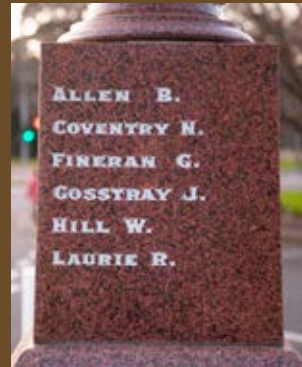
Diamond Creek War Memorial

Reserve Circuit,
Community Centre,
Diamond Creek

The memorial is a polished red granite column surmounted by an urn.

It was originally dedicated in 1921, at the intersection of Collins and Main Streets, as a World War One memorial to the fallen of Diamond Creek.

The memorial was rededicated at its current location in 1996 to commemorate Australian servicemen and women who have lost their lives in all wars and conflicts.



Eltham Avenue of Honour

Main Rd, Eltham

The Avenue of Honour was first instigated by Eltham's *Welcome Home Committee* who raised over £74 for the cost of trees, plaques and tree guards.

Over 100 trees were planted during 1916–17. The Committee also presented each local enlistee with a leather wallet to hold tobacco or a notepad. The Avenue of Honour extends along Main Road, between Dalton and Pitt streets and new interpretive signage was installed in 2015 with funding from the Victorian Government's *Restoring War Memorials and Avenues of Honour Grants Program*.



39

Eltham War Memorial

903 Main Rd, Eltham

The focus of this living memorial was to benefit the children of the Shire, *“a constant reminder to us of those who fought for us and the little ones for whom they fought and died.”*

It took the form of an Infant Welfare Centre (1952), a Pre-School (1956) and Children’s Library (1961) later refashioned as the War Memorial Hall, complemented by the Memorial Garden and Memorial Gates.



40

Hurstbridge Memorial Park

Graysharps Rd, Hurstbridge

In 1920 the *Hurstbridge Progress Association* decided that a tangible, lasting memorial to all those who served in the First World War was needed.

The idea of a sporting, recreational park was agreed on and *Hurstbridge Memorial Park Committee*, which included local returned soldiers, was established. In 1921 a portion of Bob Sharps' orchard was purchased and funds were raised for its construction.

The Park was opened in 1922. Celebrations included a picnic lunch and a large program of athletic events.



Hurstbridge Cricket Club



Hurstbridge Football Club, 1935



Hurstbridge Tennis players, 1922



41

Panton Hill Firefighters Memorial Park

6 Merritts Rd, Panton Hill

In the 1983 Ash Wednesday bushfires, five members of the Panton Hill Fire Brigade died in Upper Beaconsfield.

The memorial park in the centre of the Panton Hill Township pays tributes to those firefighters and provides a social venue to acknowledge the central role of the Brigade in bringing the community together. At the Fire Station, at right angles to the row of pegs on which the firefighters hang their helmets and jackets, there is a polished plank of wood with five empty pegs and a simple plaque for each of the firefighters who lost their lives.



42

Plenty War Memorial Gates

Memorial Drive, Plenty

The gates of the Plenty War Memorial Park were erected in 1951 in memory of local residents who served during World War One and World War Two.

Plaques commemorating service in Korea, Malaysia, Vietnam and other recent conflicts have been added. Over the years, the volume of traffic entering the park increased and the gates were damaged. The *Plenty Historical Society* restored the gates and they were rededicated in November 2009.



43

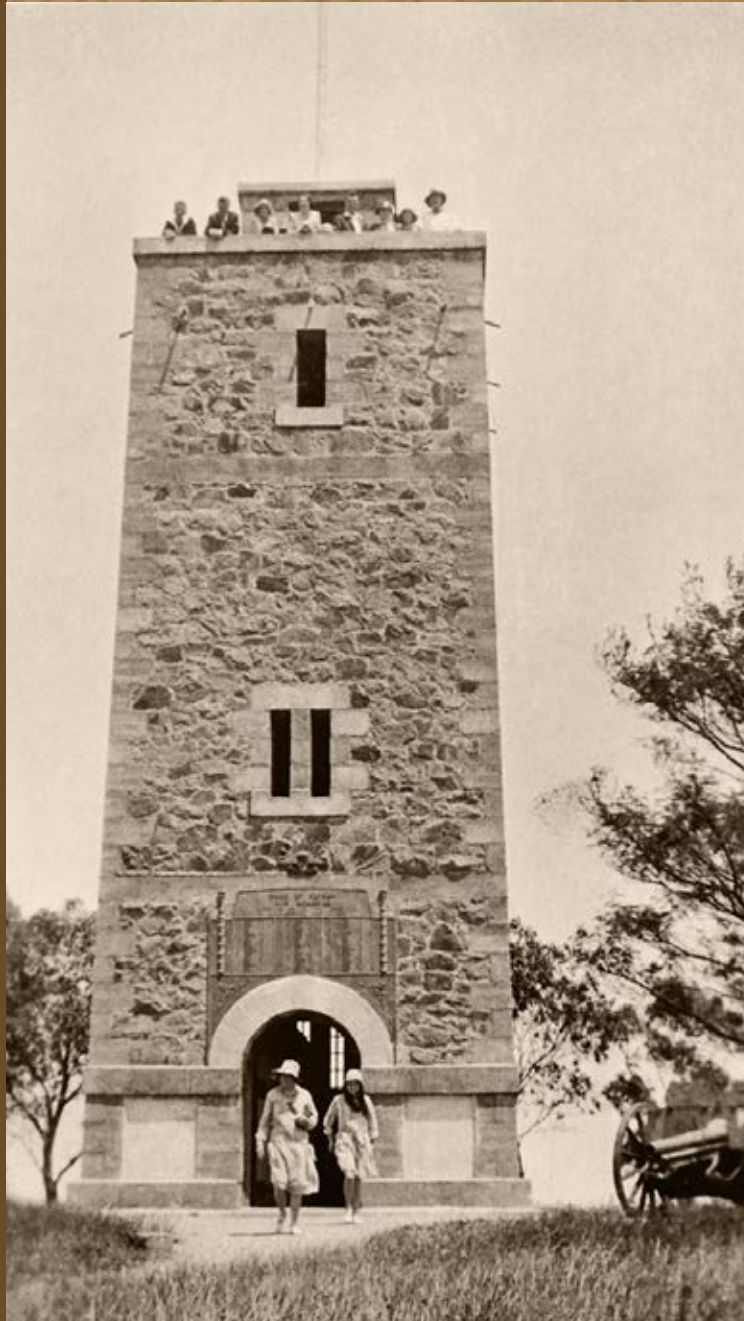
Kangaroo Ground War Memorial Park

385 Eltham-Yarra Glen Rd,
Kangaroo Ground

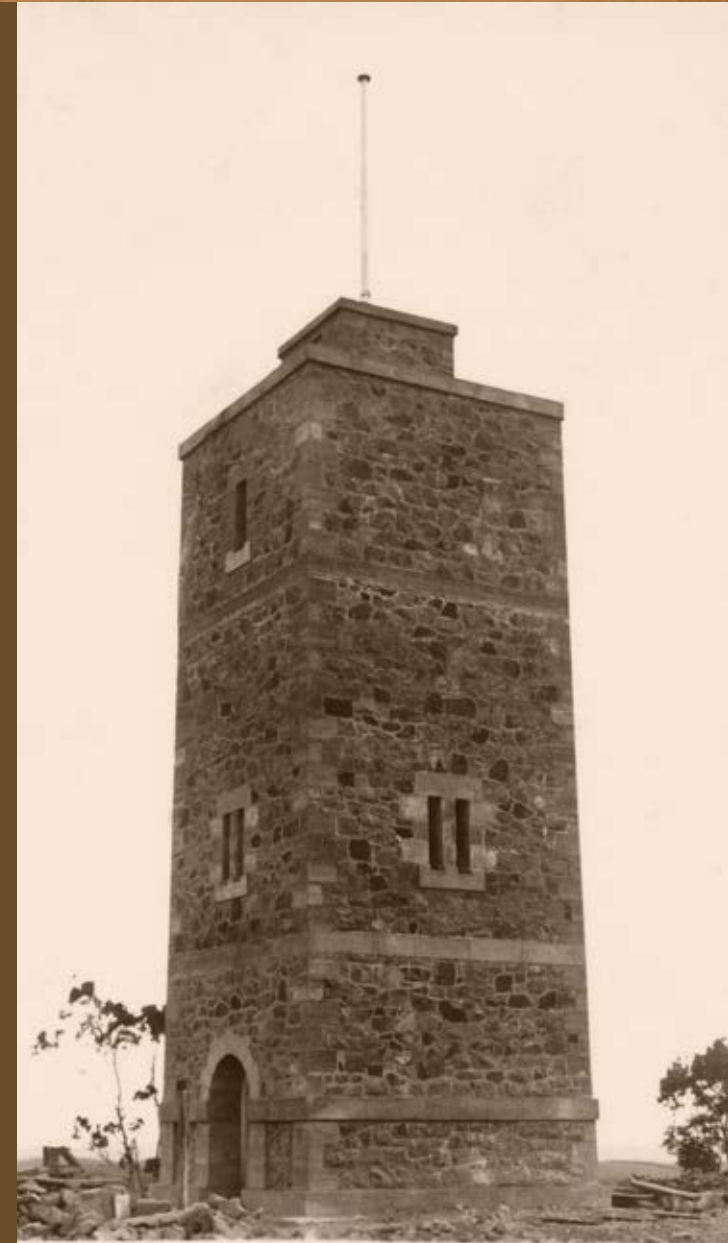
Established in memory of the fallen of the Great War, this area was originally known as *Memorial Park*. In 1918 Shire President Robert White and Councillors of the Shire of Eltham instigated the purchase of the original two acres of land from the Mess Brothers.

The *Shire of Eltham War Memorial* was built by George Rousell in 1926 from stone quarried from Dr Ethel Osborne's property in Kangaroo Ground. The £100 required to build the tower was raised by the community of the *Shire of Eltham*.

The Governor-General of Australia, Lord Stonehaven unveiled the *Plaque to the Fallen* and opened the memorial tower on Armistice Day 11·11·1926 in front of a crowd of 1500 people.



above: *The War Memorial tower in the 1930s*
right: *1925 just before completion, building materials at base*



SHIRE OF ELTHAM
SOLDIERS' WAR MEMORIAL
UNVEILED 11-11-26.

44

Strathewen Community Bushfire Memorial

Peter Avola Pavilion
160 Chadds Creek Rd, Strathewen

The memorial is dedicated to the memory of the people who perished in the Black Saturday bushfires of 2009.

The memorial consists of four circles, each representing a theme of beauty, loss, rebuilding and rejuvenation. Designers from *Arterial Design* and *Urban Initiatives* sourced individual stories from the community to create a collective voice. The memorial won the 2013 *Australian Institute of Landscape Architects (AILA) Victoria President's Award*.



45

The Blacksmiths' Tree

Peter Avola Pavilion
160 Chadds Creek Rd, Strathewen

Forged by hundred of blacksmiths across the world, the Blacksmiths' Tree represents the spirit of hope and renewal following the devastating 2009 Victorian Bushfires.

The *Australian Blacksmiths Association (Victoria)* invited blacksmiths to contribute to the creation of the ten metre stainless steel and copper gum tree in 2009. Blacksmiths from over 23 countries forged leaves for the tree and volunteer welders pieced 3500 leaves and hundreds of branches together over five years. The Blacksmiths' Tree was erected on 14 February, 2014.



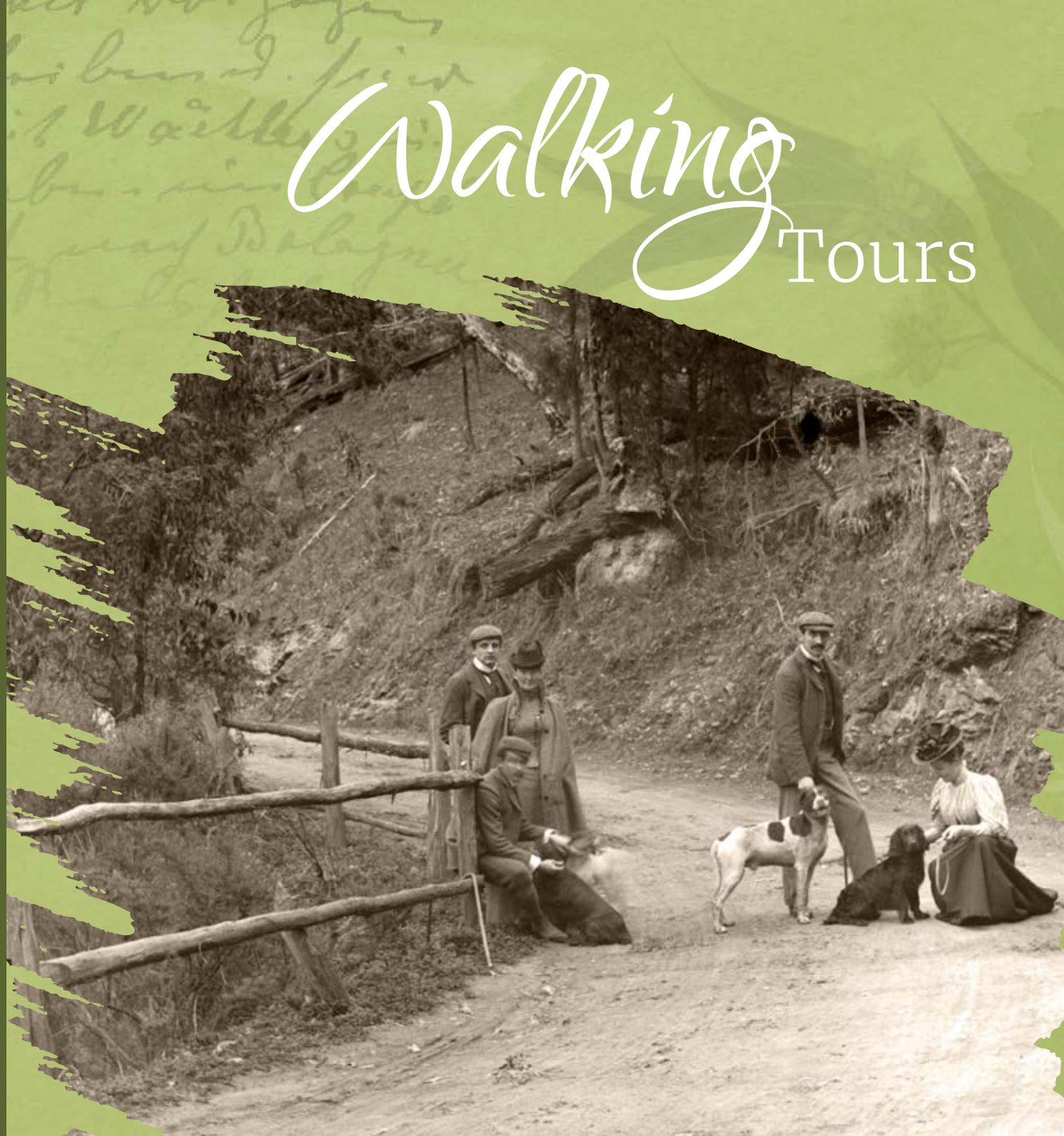
Walking Tours

46 Hurstbridge Heritage Trail

47 Gawa Resource Trail

48 Smiths Gully - St Andrews
Nature History Trail

49 Ye Olde Yarrambat Walk



46

Hurstbridge Heritage Trail

from 794 Main Rd, Hurstbridge

The Hurstbridge Heritage Trail has 30 sign-posted sites of historical significance in the Hurstbridge township area including the *Avenue of Honour* in Anzac Avenue, Dorset house site and Little Bank building.



The Hurstbridge Post Office was originally the office of the Evelyn Observer newspaper when the paper relocated from Kangaroo Ground.

47

Gawa Resource Trail

from 873 Eltham-Yarra Glen Rd, Watsons Creek

The 340 metre loop provides insight into how the Wurundjeri clan lived near the creek and used the land for food, medicine and clothes.

The trail introduces visitors to the indigenous flora and fauna, including manna gums, Lomandra (used to weave baskets) and wombat burrows.



48

Smiths Gully to St Andrews Nature History Trail

from Peter Franke Reserve car
park to St Andrews

The trail follows the Smiths
Gully Creek through the *Old
Caledonia Gully* alluvial gold
diggings of the 19th-20th Century.

The return walk is three kilometres.



49

Ye Olde Yarrambat Walk

from 474 Ironbark Rd, Yarrambat

The looped walk starting in the vicinity of the General Store explores the history of the old town along Ironbark Road.

The walk takes in 13 sites which link historic Yarrambat to today and include St Michael's Church, the historic oak tree, the Eltham & District Woodworkers and the original school house site.

Originally known as *Tanck's Corner*, Yarrambat was once a rich goldmining area.



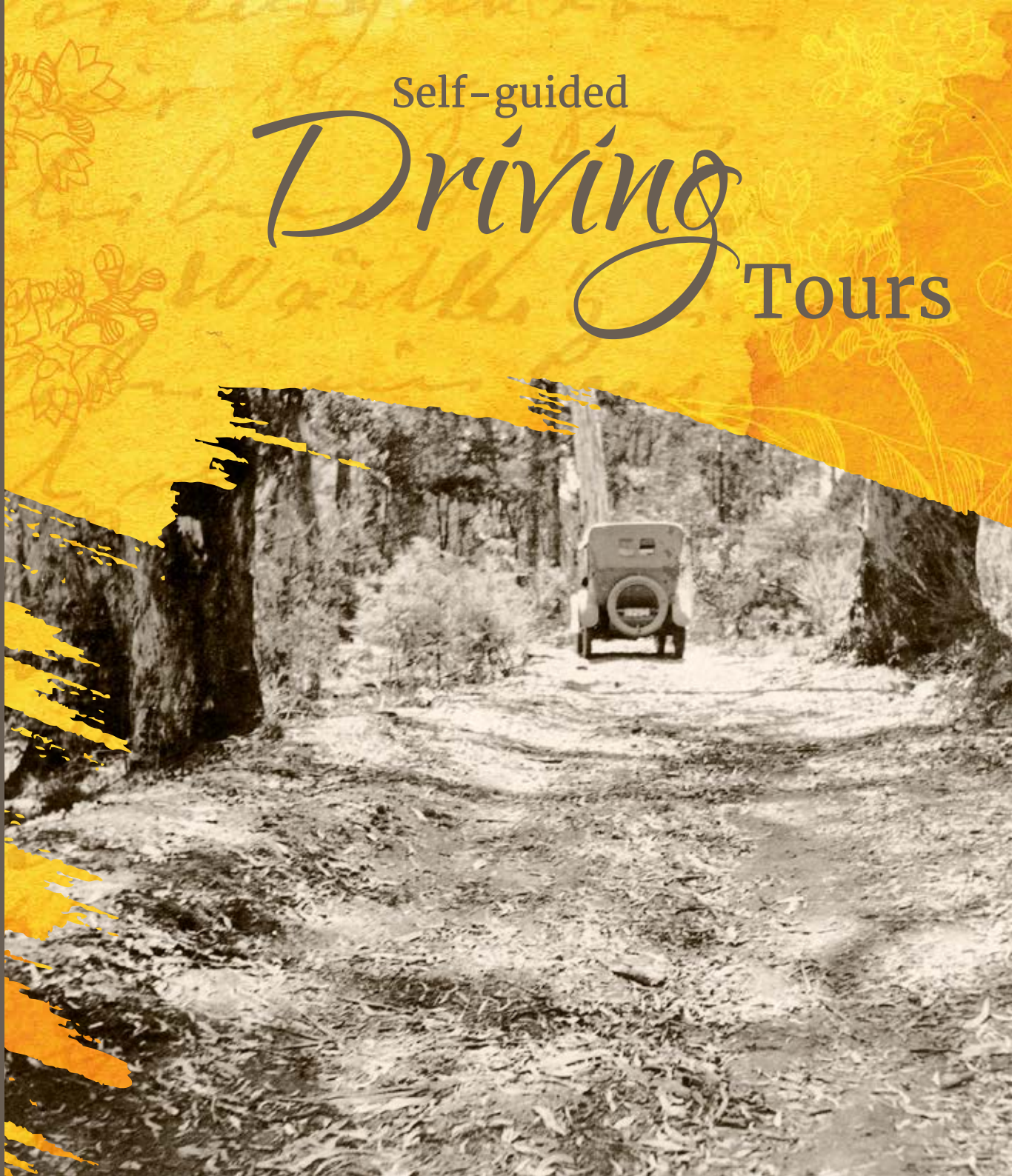
Self-guided
Driving
Tours

▼ South
ELTHAM

◀ West & Central
ELTHAM | KANGAROO GROUND | DIAMOND CREEK
PLENTY | YARRAMBAT | HURSTBRIDGE

▶ East
RESEARCH | KANGAROO GROUND | CHRISTMAS HILLS

▲ North
PANTON HILL | ARTHURS CREEK | STRATHEWEN



South Tour

ELTHAM

this tour can be walked

- 1 Victorian Artists Supplies
- 3 Eltham Library
- 4 Montsalvat
- 12 Alistair Knox Park
- 15 Eltham Justice Precinct
- 22 St Margaret's Anglican Church
- 28 Shillinglaw Cottage
- 34 Trestle Bridge & Railway
- 38 Eltham Avenue of Honour
- 39 Eltham War Memorial



West & Central Tour

ELTHAM | KANGAROO GROUND | DIAMOND CREEK
 PLENTY | YARRAMBAT | HURSTBRIDGE

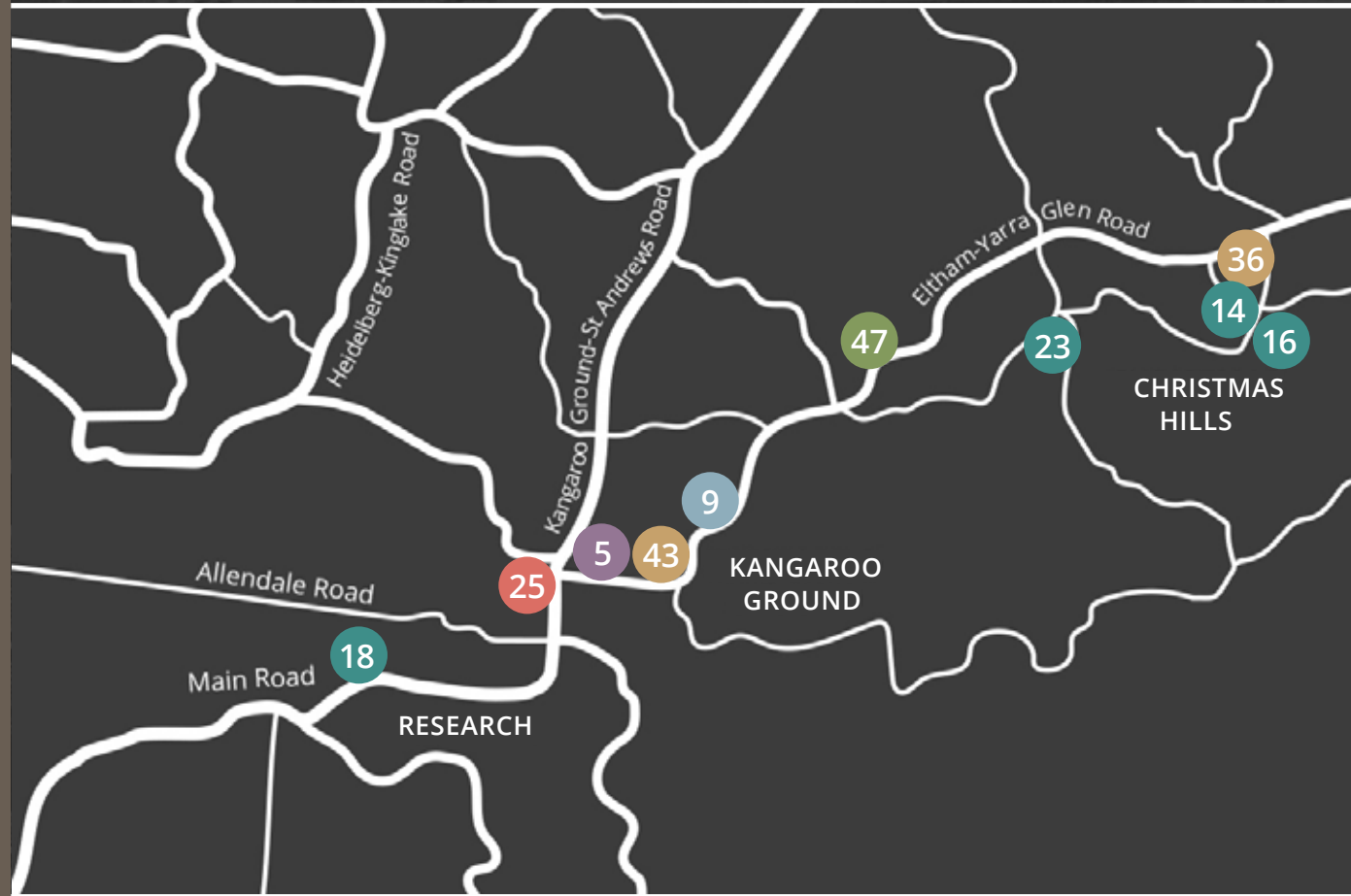
- 8 Hurst Family Cemetery
- 10 Nillumbik Cemetery
- 17 Monash Bridge
- 18 Maroondah Aqueduct, Research
- 19 Plenty Heritage Park
- 24 Allwood House
- 26 Edendale Farm
- 27 Ellis Cottage
- 29 Yarrambat Heritage Museum
- 30 Batman Tree
- 32 Golden Mines
- 35 Union Mine & Diamond Creek Mine
- 37 Diamond Creek War Memorial
- 42 Plenty War Memorial Gates
- 40 Hurstbridge War Memorial Park
- 49 Hurstbridge Heritage Trail
- 49 Ye Olde Yarrambat Walk



► East Tour

RESEARCH | KANGAROO GROUND | CHRISTMAS HILLS

- 5 Moor-rul Viewing Platform
- 9 Kangaroo Ground Cemetery
- 14 Christmas Hills Mechanics Institute
- 16 Flying Squirrel Hotel
- 18 Marondah Aqueduct, Research
- 23 Sugarloaf Reservoir
- 25 Andrew Ross Museum
- 36 Christmas Hills War Memorial
- 43 Kangaroo Ground War Memorial Park
- 47 Gawa Resource Trail



North Tour

PANTON HILL | ARTHURS CREEK | STRATHEWEN

- 2 Dunmoochin
- 6 Arthurs Creek Cemetery
- 11 Queenstown Cemetery
- 13 Arthurs Creek Mechanics Institute
- 20 St Andrews Hotel
- 21 St Andrews School & Wadambuk
- 31 Charnwood
- 33 St Andrews Community Market
- 41 Panton Hill Firefighters Memorial Park
- 44 Strathewen Bushfire Memorial
- 45 The Blacksmiths' Tree
- 48 Smiths Gully-St Andrews Nature History Trail



Photographic Acknowledgements

Cover

Queenstown (St Andrews) Primary School, St Andrews, circa 1905

Shire of Eltham Pioneers Photograph Collection

Yarra Plenty Regional Library in partnership with Eltham District Historical Society

Welcome

Kruger, Fred; Victorian Aboriginals [Aboriginal Australians] and canoe, 1870 H2006.123/10

State Library Victoria, with permission from the Wurundjeri Woi Wurrung Cultural Heritage

Aboriginal Corporation

The First People of Nillumbik

Koorong Project

Wurundjeri Woi Wurrung Cultural Heritage Aboriginal Corporation

Arts & Culture

Walter Withers in his studio at his home, Eltham, circa 1900s

Shire of Eltham Pioneers Photograph Collection
Yarra Plenty Regional Library in partnership with
Eltham District Historical Society

*Withers, Walter; **The Storm**, 1896*
Art Gallery of NSW

2 Dunmoochin

*Brown, M.; **Home of Clifton Pugh, artist, Arthur's Creek, Victoria**, 1961*
National Archives of Australia NAA: A1200, L40963

*Brown, M.; **Clif in his Studio, Victoria**, 1961*
National Archives of Australia NAA: A1200, L40962

*Brown, M.; **Clifton and family, Dunmoochin, Victoria**, 1961*
National Archives of Australia NAA: A1200, L40961

*Pierse, Simon; **Pugh's House and Courtyard, Dunmoochin**, 2001*

*Pugh, Clifton; **Mural on Long Gallery, Dunmoochin***
Dunmoochin Foundation

***Clifton Pugh painting a portrait of Dame Mabel Brooke**, 1970*
Shire of Eltham Pioneers Photograph Collection
Yarra Plenty Regional Library in partnership
with Eltham District Historical Society

*Pugh, Clifton; **Prue**, 1988, oil painting*
Dunmoochin Foundation

*Pugh, Clifton; **Owls in the Night**, 1986, screenprint*
Dunmoochin Foundation

*Pugh, Clifton; **Self Portrait**, 1985,*
oil painting & collage
Dunmoochin Foundation

***Clifton Pugh's Dunmoochin (with Hooper the Wombat)**, 1972*
The Age, Melbourne

*Burton, Miranda.; **Excellent Digger**,*
scratchboard illustration, 2020

*Burstall, Tim.; **still from Sebastian the Fox, ep. 8 The Painter**, 1963*
Eltham Film Productions

3 Eltham Library

***Eltham Library**, 1994*
Yarra Plenty Regional Library

***Eltham Library Under Construction**, 1993*
Yarra Plenty Regional Library

Eltham Library Plans, Eltham Library exterior
Gregory Burgess Architects

Eltham Library interior
Gregory Burgess Architects

Children's Courtyard
Jeavons Landscape Architects

4 Montsalvat

***Montsalvat Great Hall**, 2008*
Field of Vision Photography

***Caldwell, Bill.; The Grand Hall, Montsalvat**, 1983,*
illustration
Eltham District Historical Society

Montsalvat Great Hall, circa 1970s
Field of Vision Photography

***Collins, John T; Great Hall**, 1963 H95-200-1283*
J. T. Collins Collection, La Trobe Picture Collection
State Library Victoria

***Weigand, Martin; Parsifal**, 1930*

***Wilson, Michael; A Currawong Takes Flight**, steel*
sculpture; photographed with Montsalvat Chapel by
Peter Pidgeon, 2015
Eltham District Historical Society

Chapel images, Residents' Gallery, Barn, Upper Gallery
Field of Vision Photography

***Collins, John T; Montsalvat Swimming Pool**, 1963*
H95.200/1297
J. T. Collins Collection, La Trobe Picture Collection
State Library Victoria

***Skipper, Myra; The Wave**, enameled brooch, 1986*
photographer, Silvi Glattauer
Nillumbik Shire Council

***Tucker, Albert; Matcham Skipper at Montsalvat**,*
circa 1939-45 H2010.72/11
State Library Victoria

***Matcham Skipper at work**, circa 1970*
Shire of Eltham Pioneers Photograph Collection
Yarra Plenty Regional Library in partnership with
Eltham District Historical Society

The Gatehouse, The Long Gallery
Eltham District Historical Society

***Collins, John T; Montsalvat (Great Hall)**, 1977*
H95.200/1286
J. T. Collins Collection, La Trobe Picture Collection
State Library Victoria

***Royal Insurance Building, Collins Street**, 1909*
collection of Peter Maltezos
www.thecollectormm.com.au

***Tucker, Albert; Views of Buildings at Montsalvat (Great Hall under construction)**, circa 1939-45 H2008.98/177*
State Library Victoria

All additional photos by Amanda Grant, Rare Metal Design

Local Cemeteries

*Mainka, Ern, **Winter in Queenstown***
State Library Victoria

6 Arthurs Creek Cemetery

Agnes Reid, Patrick Reid
Peter Nankervis

Charles Draper, aged 80, 1905
Fay Thomas Collection,
Yarra Plenty Regional Library

Charles Draper Grave site
Peter Nankervis

***Peter Brock, Austin Seven,
Peter Brock, Austin 30 Victory Lap***
courtesy of Lewis Brock

7 Eltham Cemetery

*Wilson, Michael; **Black Prince Cicada**, 2017*

*Detoma, Linda; Lascelles, Nerina, **Our Eltham,
Artistic Recollections**, 2017*

8 Hurst Family Cemetery

*Calvet, Samuel; **Henry Hurst**, 1866*
wood engraving IMP27/10/66/356
published in The Illustrated Melbourne Post,
from a photograph by Fox, Alexander
State Library Victoria

*Robert, Bruce, engraver, Gill, S. T., artist;
Capture of Burke the Bushranger, 1866*
IMP27/09/66/349
published in The Illustrated Melbourne Post,
State Library Victoria

***Women of the Hurst Family**, 1910*
Shire of Eltham Pioneers Photograph
Collection
Yarra Plenty Regional Library in partnership
with Eltham District Historical Society

9 Kangaroo Ground Cemetery

***Burial of The Hon. Ewen Hugh Cameron**, 1934*
Andrew Ross Museum

Furphy Watertank
Fay Thomas Collection,
Yarra Plenty Regional Library

***Such is Life by Tom Collins**,*
cover of 1945 edition

10 Nillumbik Cemetery

Nillumbik Cemetery Gate
Michael Aitken Collection
Eltham District Historical Society

Mr Weekes Coaches and Cemetery Gates
Nillumbik Historical Society

Alan Marshall
Shire of Eltham Pioneers Photograph
Collection
Yarra Plenty Regional Library in partnership
with Eltham District Historical Society

***Gordon Coventry**, 1934*
Wikimedia Commons, the free media
repository

11 Queenstown Cemetery

***Ah Yet, Queenstown Miner**, circa 1925*
Shire of Eltham Pioneers Photograph Collection
Yarra Plenty Regional Library in partnership
with Eltham District Historical Society

***Miners , Sutherland & Hart Mine Pantom Hill**,*
circa 1870s
Nillumbik Historical Society

*All additional photos by Amanda Grant, Rare
Metal Design*

Living in Nillumbik

F. G. Hurst and Mrs. F. G. (Catherine) Hurst and grandchildren; Clarice, Georgy and Sylvia Gray, Allwood House
Shire of Eltham Pioneers Photograph Collection
Yarra Plenty Regional Library in partnership with
Eltham District Historical Society

12 Alistair Knox Park

Burt, Cliff; Classical Landscape, steel sculpture

Fries, Ernst; Surveyor of Suburban Environs,
stainless steel sculpture

Alistair Knox

Shire of Eltham Pioneers Photograph Collection
Yarra Plenty Regional Library in partnership with
Eltham District Historical Society

13 Arthurs Creek Mechanics Institute

Arthurs Creek Mechanics Institute, 2000 and 1960s
Peter Nankervis

Decorations for Verso-Murphy Wedding, 1925
Peter Nankervis

14 Christmas Hills Mechanics Institute

Pidgeon, Liz; Christmas Hills Mechanics Institute, 2014
Yarra Plenty Regional Library

Butler, Graeme; Harold Muir Hall, 2005

Xmas Hills Monthlies, hand printed poster, 1977
collection of Hugh McSpeddon

15 Eltham Justice Precinct

Prior, Tom; Police House, Main Road Eltham, circa 1890s
Eltham District Historical Society

Snow, Alfred T; Drawings for the Eltham Courthouse, 1859
Extracted from the *Justice Precinct, Eltham, Victoria: Conservation
Management Plan*, prepared by the
Department of Sustainability and Environment, 2006

17 Monash Bridge

Opening of the Monash Bridge, 1917
Shire of Eltham Pioneers Photograph Collection
Yarra Plenty Regional Library in partnership with
Eltham District Historical Society

New Bridge at Hurst Bridge, 1917
Shire of Eltham Pioneers Photograph Collection
Yarra Plenty Regional Library in partnership with
Eltham District Historical Society

State Monier Pipes & Reinforced Concrete Works,
advertisement in *Building* newspaper, January 12, 1931

Testing Hurst Bridge, 1917
obj-2353695364 & obj-2353694846
Papers of Sir John Monash, National Library of Australia

Monash Bridge, Ribbon Cutting, 1917
Allwood House

The Old Bridge, Hurst Bridge obj-2353695103
Papers of Sir John Monash, National Library of Australia

18 Research Aqueduct

Research Aqueduct
Shire of Eltham Pioneers Photograph Collection
Yarra Plenty Regional Library in partnership with
Eltham District Historical Society

Parsons Road Bridge over the Aqueduct
Eltham District Historical Society

Ingrams Road Bridge over the Aqueduct, circa 1986
Eltham District Historical Society

19 Plenty Heritage Park

McPhillips, Sean; Plenty Church, refurbished & relocated, 2018
Mighty Films
courtesy of Major Road Projects Victoria

Relocation of the Former Methodist Church, Plenty, 2018
RBA Architects + Conservation Consultants

Plenty Church as Sugabuds Gift Shop & Florist, 2017
moko creative

Plenty Church, 1981
Yarra Plenty Regional Library

Plenty Church, 2002
Plenty Historical Society

Plenty Church, circa 1920s
Plenty Historical Society

20 St Andrews Hotel

*Seers Studios, A survival of the good old coaching days at
Queenstown, Victoria, 1926* H18640
State Library Victoria

Eliza Smith
St Andrews-Queenstown Historical Society

**St. Andrews, including St. Andrews Hotel with people standing
on the veranda, horses and carriages and carts, child
struggling with some papers on the road, 1910** H2009.61/12
State Library Victoria

M. P. O'Dea St Andrews Hotel, circa 1928
St Andrews-Queenstown Historical Society

St Andrews Hotel, circa 1930s
St Andrews-Queenstown Historical Society

St Andrews Hotel, advertisement in *Broad Bent's Standard
Official Road and Railway Guide to Victoria—50 miles from
Melbourne*, circa 1935

21 St Andrews School

Queenstown (St Andrews) School circa 1905
Shire of Eltham Pioneers Photo Collection
Yarra Plenty Regional Library in partnership with
Eltham District Historical Society

Wadambuk Plans
Gregory Burgess Architects

22 St Margaret's Anglican Church

St Margaret's Church of England
Michael Aitken Collection,
Eltham District Historical Society

*Billing, Nathaniel; Original design sketch of
St. Margaret's, 1860*
Eltham District Historical Society

Skipper, Matcham; Crucifix

23 Sugarloaf Reservoir

Wallis, Ric; Images of Sugarloaf Reservoir, 2011
Melbourne Water

Sugarloaf Reservoir, under construction, 1980
Yarra Plenty Regional Library

All additional photos by Amanda Grant, Rare Metal Design

Historic Houses & Museums

Collins, John T; Hurstbridge. Old Inn. (Dorset House), 1969
H97.250/1034A
J. T. Collins Collection, La Trobe Picture Collection,
State Library Victoria

*Jones, Albert; View of Hurstbridge and surrounds
from Thorns Hill, circa 1914* H82.184/112
State Library Victoria

24 Allwood House

Hurst Family outside Allwood House, circa 1890s
Shire of Eltham Pioneers Photograph Collection
Yarra Plenty Regional Library in partnership with
Eltham District Historical Society

Allwood House, circa 1900s
Allwood House

Allwood House with small child on trike
Allwood House

Original Allwood House, 1838
Allwood House

Palms at Allwood House
Allwood House

Little Bank Building on Main Road, 1970
Allwood House

25 Andrew Ross Museum

*Rear of Kangaroo Ground School with teacher's
residence attached, circa 1929*
Andrew Ross Museum

Kangaroo Ground School, 1879
Andrew Ross Museum

Andrew Ross Museum, 2014
Andrew Ross Museum

*Evelyn Observer and Bourke East Record,
edition 16 July 1907*
National Library of Australia

26 Edendale Farm

Glattauer, Silvi; Edendale Farm, 2015
Nillumbik Shire Council

Trembath, Tony; The Fences Act 1968, 1989–1994
Nillumbik Shire Council

Anna Dalton painting 'A Summer's Walk 1923', 2020
Diamond Valley Artists Society

Delpoppolo, Goulianna; Thanks a bunch, 2020
Diamond Valley Artists Society

Jenkins, Ellen; Look, 2020, ceramic
Diamond Valley Artists Society

Animals of Edendale Farm
Nillumbik Shire Council

Glattauer, Silvi; Nursery, Fiona Watering, 2015
Nillumbik Shire Council

McKenzie, Stephen; Alfresco café, 2019
Nillumbik Shire Council

Glattauer, Silvi; Indigenous Plant Nursery, 2010
Nillumbik Shire Council

*View of Collins Street showing Town Hall
and Victorian Coffee Palace, 1875* H36076
State Library Victoria

Victorian Coffee Palace, postcard circa 1904
collection of Peter Maltezos
www.thecollectormm.com.au

Interior, Edendale Farm, 2012
Nillumbik Shire Council

27 Ellis Cottage

Ellis Cottage
Nillumbik Historical Society

Ellis Cottage chimney breast and fireplace
Nillumbik Historical Society

Early image of Ellis Cottage with Peppercorn Tree
Nillumbik Historical Society

Jones, Albert; Scenes from Diamond Creek, circa 1912
(3 images)

*Diamond Creek Show: Line of women some in riding habits,
all on horseback, sitting side saddle* H2007.130/74
Crowd gathered in paddock, horses and jockeys in foreground
H2007.130/75
*Elevated view of crowd gathered around track, horse race
in progress* H2007.130/76
State Library Victoria

Diamond Creek Races, article from Evelyn Observer 3 Feb
1893

28 Shillinglaw Cottage

Knox, Tony; Shillinglaw Cottage at its original site, Eltham,
circa 1963
Eltham District Historical Society

John Cochrane in front of Shillinglaw Cottage, circa late
1800s
Eltham District Historical Society

Shillinglaw Cottage, Eltham Common, 1984
Eltham District Historical Society

Ebeli, John; Beautiful Eltham, 1986
Nillumbik Shire Council

*Flavour of Eltham: recipes and other items collected by
friends of the Shillinglaw Cottage, 1964, cover and selected
pages*
Eltham District Historical Society

29 Yarrambat Heritage Museum

Wood, Phillip; Wool classing table, 2018
Yarrambat Historical Society

Yarrambat Primary Schoolhouse, 2016
Yarrambat Historical Society

Tancks Corner School No. 2054, circa 1928
Yarrambat Historical Society

*Headmaster James Sexton and Pupils at Yarrambat
Primary School, circa 1937*
Yarrambat Historical Society

All additional photos by Amanda Grant, Rare Metal Design

Industry

Apple Packing, Hurstbridge

Shire of Eltham Pioneers Photograph Collection
Yarra Plenty Regional Library in partnership
with Eltham District Historical Society

30 Batman Tree

Brown, R. G; **72 year old Apple Tree**, pictured:
George Mitchell, Johannes Adam Bosch &
Robert Emmet Whatmough,
Leader Newspaper (Melbourne), 9th April 1910, p. 25
Greensborough Historical Society

Batman Tree in Flower

Batman Tree in Summer

Greensborough Historical Society

Whatmough's Fancy, wax model of apple, 1875

1216779
Museums Victoria

Theodore Edward Flintoff

Frederick Niven Flintoff

Martin Batey

Greensborough Historical Society

Pioneer Children's Graves

Greensborough Historical Society

Descendants of Ellen & Charles Partington at Willis

Vale, Greensborough, circa 1920s 344241

Museums Victoria

31 Charnwood

Draper, Bruce G; Homestead and garden at

'Charnwood', 1922

www.upthecreekvictoria.com.au

Greenhouse probably at 'Charnwood' Arthur's

Creek and Charles Draper, circa 1895

Fay Thomas Collection
Yarra Plenty Regional Library

Draper, Bruce G; Charnwood showing the remains

of the stables and the kitchen block, 1968

www.upthecreekvictoria.com.au

Draper, Charles; List of New Fruit Trees,

catalogue 1893

Collection of Bruce Draper

www.upthecreekvictoria.com.au

32 Golden Mines

Golden Stairs Miners, 1946

Yarrambat Historical Society

Golden Stairs Mine diagram, 1925

Geological Survey of Victoria

Leslie 'Squizzy' Taylor under the alias of Leslie

Grout, 1914 Central Register of Male Prisoners

VPRS515

Public Record Office Victoria

Golden King Battery

Yarrambat Historical Society

Wood, Phillip; Golden King Battery Drive, 2018

Yarrambat Historical Society

33 St Andrews Community Market

St Andrews Market Scenes

St Andrews Community Market

St Andrews Market, 1975

The Sun Newspaper

St Andrews / Queenstown Historical Society

Wilkins, Michael; Pedigree TV Set, 2020

34 Trestle Bridge & Railway

Coop, George; Trestle Bridge, 1981

Shire of Eltham Pioneers Photograph Collection

Yarra Plenty Regional Library in partnership

with Eltham District Historical Society

35 Union Mine & Diamond Creek Mine

Diamond Creek Mine, circa 1890

Shire of Eltham Pioneers Photograph Collection

Yarra Plenty Regional Library in partnership

with Nillumbik Historical Society

Diamond Creek Main Shaft, circa 1915

Nillumbik Historical Society

Diamond Creek Mine diagram, 1914

Geological Survey of Victoria

Diamond Creek Mine, main shaft after fire,

circa 1915

Yarra Plenty Regional Library in partnership

with Nillumbik Historical Society

Union Mine, circa 1900s

Nillumbik Historical Society

Union and South Union Quartz Mines Diamond

Creek, engraving published by Ebenezer and David

Syme, The Illustrated Australian — News for Home

Readers, 1871 IAN30/01/71/36

State Library Victoria

Union Mine diagram, 1918

Geological Survey of Victoria

All additional photos by Amanda Grant,

Rare Metal Design

Memorials

Shire of Eltham War Memorial Tower, circa 1930s
Andrew Ross Museum

37 Diamond Creek War Memorial

Reeves Store (prev. Loyal Diamond Lodge Hotel) & WW1 War Memorial in original location
Nillumbik Historical Society

38 Eltham Avenue of Honour

Dannenhauer, Roland; Forged Steel Poppy, 2015

39 Eltham War Memorial

Connor, Jim; Eltham War Memorial Gates, 2017
Eltham District Historical Society

Eltham Infant Welfare Centre from Eltham War Memorial Trust Booklet, 1954
Eltham District Historical Society

Eltham War Memorial Buildings, 1968
Eltham District Historical Society

Connor, Jim; Eltham War Memorial Hall, 2017
Eltham District Historical Society

War Memorial Obelisk 1914-1918, Cnr. Main Road and Bridge Street, 1919
Shire of Eltham Pioneers Photograph Collection
Yarra Plenty Regional Library in partnership
with Eltham District Historical Society

Unveiling War Memorial 1914-1918 by Sir William Irvine, Lieutenant-Governor of Victoria, 3 August 1919
Shire of Eltham Pioneers Photograph Collection
Yarra Plenty Regional Library in partnership
with Eltham District Historical Society

40 Hurstbridge War Memorial Park

Howlett, Kev; Hurstbridge War Memorial Park, 2017
Yarra Plenty Regional Library

**Hurstbridge Cricket Club
Hurstbridge Football Club**, 1935
Tennis Playes at Hurstbridge, 1922
Allwood House

42 Plenty War Memorial Gates

Plenty Memorial Gates Dedication, 1951
Plenty Historical Society

43 Kangaroo Ground War Memorial Park

Shire of Eltham War Memorial Tower, circa 1930s
Andrew Ross Museum

Soldiers' War Memorial Park, Shire of Eltham, Unveiled 11-11-26, postcard, 1926 H90.160/1057
State Library Victoria

Wilson, Drew; View from Observation Deck, 2020

View From War Memorial Tower, Kangaroo Ground
Yarra Plenty Regional Library

Caretaker William 'Tiny' Carroll, with Joyce McMahon, daughter of the Shire secretary, at the tower, circa 1934
Eltham District Historical Society

Bishop, Herbert; Volunteer Motor Corp on an outing to Kangaroo Ground, circa 1916 H87.34/238
State Library Victoria

Dedication of Tower and Cottage, 1951
Eltham District Historical Society

Marriage of Robert White to Ruby McDonald, 1914
courtesy Marion White

44 Strathewen Bushfire Memorial

Strathewen Bushfire Memorial, 2016 (first image)
Diana Robertson

Strathewen Bushfire Memorial, 2012
(all other images and diagrams)
Arterial Design

45 The Blacksmiths' Tree

Blacksmiths' Tree at Night
Steel gumleaves forged by Henk Welton
Copper Leaf forged by Doug Tarrant

Trunk under the press, Overall Forge NSW, 2012
Davey press with Industrial Blacksmiths from Overall Forge and Blacksmiths from the Australian Blacksmiths Association (Victoria), 2012
Roland Dannenhauer and Bruce Beamish forging a branch under the Bradley Hammer, 2012
Steven Nicholl forging a finial, 2015
Max from Alustain Installations, welding, 2013

Roland Dannenhauer forging a grassblade, 2015

International & Australian Leaves, 2009
all images courtesy Australian Blacksmiths Association (Victoria) and the Blacksmiths' Tree Project

All additional photos by Amanda Grant,
Rare Metal Design

Walking Trails & Driving Tours

WALKING TRAILS

Christmas Hills Walking Group, circa 1886–1895
H81.155/19
Ramsay Family Collection
State Library Victoria

46 Hurstbridge Heritage Trail

Hurstbridge Post Office
Allwood House

Hurstbridge Post Office
Eltham District Historical Society

Hurstbridge Pony Express
Allwood House

48 Smiths Gully—St Andrews Nature History Trail

State Battery, Queenstown, 1919
St Andrews/Queenstown Historical Society

Opening of the State Battery, Queenstown, 1919
Shire of Eltham Pioneers Photograph Collection
Yarra Plenty Regional Library in partnership
with Eltham District Historical Society

49 Ye Olde Yarrambat Walk

Mattinbgn, St Michaels Anglican Church, 2015
Licensed under CC BY 3.0

DRIVING TOURS

Driving
Fay Thomas Collection,
Yarra Plenty Regional Library

Maps

Eltham Hotel, circa 1900
Eltham District Historical Society

**Jack the Post Office Dog, Were Street,
Montmorency,
circa 1940s**
Shire of Eltham Pioneers Photograph Collection
Yarra Plenty Regional Library in partnership
with Eltham District Historical Society

**Yarrambat / Tancks Corner Primary School,
1928**
Yarrambat Historical Society

Hurstbridge Post Office
Eltham District Historical Society

Plenty River
Dorris McLaughlin Collection,
Greensborough Historical Society

**Peggy Studley Baker's Cart, Diamond Creek,
1944**
Nillumbik Historical Society

**West's Research Hotel, Main Road, Research,
circa 1930**
Shire of Eltham Pioneers Photograph Collection
Yarra Plenty Regional Library in partnership
with Eltham District Historical Society

Jones, Albert; Kangaroo Ground Hotel, 1910
H2007.130/49
State Library Victoria

Christmas Hills Post Office
Shire of Eltham Pioneers Photograph Collection
Yarra Plenty Regional Library in partnership
with Eltham District Historical Society

Arthurs Creek Post Office, circa 1960s
Eltham District Historical Society

Hemphills property, Strathewen, circa 1890
collection of Celeste Geer

St Andrews General Store, 1954
St Andrews/Queenstown Historical Society

Jones, Albert; Panton Hill Hotel, circa 1910–1930
H2007.130/22
State Library Victoria

*All additional photos by Amanda Grant, Rare
Metal Design*

Historical Societies

& other Contributing Organisations


Nillumbik's local historical societies are volunteer organisations that celebrate and preserve the unique individual history of townships, districts and people in the Shire.

Andrew Ross Museum

www.andrewrossmuseum.org.au

Arthurs Creek Mechanics Institute


acmi1887.wixsite.com/acmi1887

 /ArthursCreekHall

Eltham District Historical Society

www.elthamhistory.org.au

victoriancollections.net.au/organisations/eltham-district-historical-society#collection-records

 /elthamhistory

Friends of Kangaroo Ground War Memorial Park

kgtp.org

Greensborough Historical Society

www.greensboroughhistorical.org.au

victoriancollections.net.au/organisations/greensborough-historical-society#collection-records

Hurstbridge & District Historical Society

www.nillumbik.vic.gov.au/Planning-matters/Planning-for-our-Shire/Heritage/Local-Historical-Societies

Nillumbik Historical Society

nillumbikhistoricalociety.blogspot.com

 /elliscottage

Nillumbik Reconciliation Group

nrg.org.au


 /groups/nillumbikreconciliation

Plenty Historical Society

www.historyvictoria.org.au/directory/listing/plenty-historical-society-inc


St Andrews – Queenstown Historical Society

www.standrewscommunitycentre.org/st-andrewsqueenstown-historical-society

 /St-AndrewsQueenstown-Historical-Society-1798870157048955


Warrandyte Historical Society

whsoc.org.au

 /warrandytehistoricalsociety


Yarrambat Historical Society

yarrambathistoricalociety.org.au

 /yarrambathistoricalociety

Yarra Plenty Regional Library

www.yprl.vic.gov.au

 /YarraPlentyRegionalLibrary

Nillumbik Shire Council: *Local History Groups*

www.nillumbik.vic.gov.au/Planning-matters/Planning-for-our-Shire/Heritage/Local-Historical-Societies

WikiNorthia

www.yprl.vic.gov.au

Wurundjeri Woi Wurrung Cultural Heritage Aboriginal Corporation

www.wurundjeri.com.au



**Produced by Rare Metal Design
for Nillumbik Shire Council**

Design & additional photography by
Amanda Grant
Additional text by Neil Grant

*In grateful acknowledgment of the
generous support of*

Wurundjeri Woi Wurrung Cultural
Heritage Aboriginal Corporation

Contributing Historical Societies

Yarra Plenty Regional Library



This project was made possible through the support of
the Victorian Government and Public Record Office Victoria

Nillumbik Heritage Guide 2nd Edition

© Nillumbik Shire Council 2020

ISBN 978-0-9944867-7-6