

Electric Line Clearance Management Plan

2026-2027



Document version history

Version: **Version 12.0**

Title: Electric Line Clearance Management Plan 2026 - 2027

Name: Nillumbik Shire Council

Authorised by: Carl Cowie, CEO, Nillumbik Shire Council

Authorisation: Plan prepared by 31 March 2026 for FY 2026–27, with CEO authorisation to be recorded upon approval.

Version	Date	Author	Reason/Description
12.0	March 2026	Lachlan Caple, Urban Forest Planner Andrew Solum, Senior Supervising Arborist David Keep, Coordinator Parks and Open Space Heath Gillett, Manager Operations Centre	Review and update the 2026-2027 Plan to the (Interim) 2025 Regulations
11.0	June 2025	Lachlan Caple, Arborist Andrew Solum, Senior Arborist David Keep, Coordinator Parks and Open Space Heath Gillett, Manager Operations Centre	Review and update the 2025 - 2026 Plan to the 2020 Regulations
10.0	October 2024	Andrew Solum, Senior Arborist David Keep, Coordinator Parks and Open Space	Review and update the 2024- 2025 Plan to the 2020 Regulations

Version	Date	Author	Reason/Description
		Heath Gillett, Manager Operations Centre	
9.0	March 2023	Andrew Solum, Arborist David Keep, Coordinator Parks and Open Space Heath Gillett, Manager Operations Centre	Review and update the 22023-2024 plan to the 2020 Regulations
8.0	18 March 2021	Alicia Fitzgerald, Senior Supervising Arborist Blake Hunton, Coordinator Parks and Open Space Jeff Saker, Operations Lead	Review and update the 2021-2022 plan to the 2020 Regulations
7.0	11 March 2020	Alicia Fitzgerald, Senior Supervising Arborist Blake Hunton, Coordinator Parks and Open Space	Review and update the 2019-2020 version for 2020-2021
6.0	14 March 2019	Lisa Pittle, Manager Environment	Review and update the 2017-2018 version for 2019-2020
5.0	17 March 2017	Conal Creedon, General Manager Infrastructure Services	Review and update the 2016–2017 version for 2017–2018
4.0	10 November 2016	Conal Creedon, General Manager Infrastructure Services	Amendments in response to document audit by Energy Safe Victoria
3.0	4 November 2016	Conal Creedon, General Manager Infrastructure Services	Amendments in response to document audit by Energy Safe Victoria

Version	Date	Author	Reason/Description
2.0	16 September 2016	Conal Creedon, General Manager Infrastructure Services	Amendments in response to document audit by Energy Safe Victoria
1.0	31 March 2016	Lisa Pittle, Manager Infrastructure Maintenance	Initial Release

Contents

Introduction	7
References.....	7
Regulation 9 Preparation and submission of management plans	8
Sub regulation 2	8
Responsible persons within Council.....	10
(a) Name, address and telephone number of the responsible person:	10
(b) Name, position, address and telephone number of the person who was responsible for the preparation of the management plan:.....	10
(c) Name, position, address and telephone number of the persons who are responsible for carrying out the management plan:.....	10
(d) The telephone number of a person who can be contacted in an emergency that requires clearance of a tree from an electric line that the responsible person is required to keep clear of trees:	10
The objectives of the management plan	11
(e) The land to which the management plan applies	11
(f) Any hazardous bushfire risk areas and low bushfire risk areas in the land referred to in paragraph (f);	14
(g) The location of each area that the responsible person knows contains a tree that the responsible person may need to cut or remove to ensure compliance with the Code and that is:.....	14
(h) The means which the responsible person is required to use to identify a tree of a kind specified in section (g)(i), (ii) or (iii)	23
(i) The management procedures that the responsible person is required to adopt to ensure compliance with the Code, which must:	23
(j) The procedures to be adopted if it is not practicable to comply with the requirements of AS 4373-2007 Pruning of Amenity Trees while cutting a tree in accordance with the Code:.....	32
(k) A description of each alternative compliance mechanism in respect of which the responsible person has applied, or proposes to apply, for approval under clause 31 of the Code;	33
(l) The details of each approval for an alternative compliance mechanism that:	33
(m) A description of the measures that must be used to assess the performance of the responsible person under the management plan	33
(n) Details of the audit processes that must be used to determine the responsible person's compliance with the Code.....	36
(o) The qualifications and experience that the responsible person must require of the persons who are to carry out the inspection, cutting or removal of trees in accordance with the Code and the Electricity Safety (General) Regulations 2019: ..	38
(p) Notification and consultation procedures, including the form of the notice to be given in accordance with Division 3 of Part 2 of the Code	40
Dispute resolution procedures	41

(q) If Energy Safe Victoria has granted an exemption under regulation 11 relating to a requirement of the Code, details of the exemption or a copy of the exemption.	42
Regulation 10, subregulation 7	42
Schedule 1 Part 2 Division 1	43
Regulation 4 – Exception to minimum clearance space for structural branches around insulated low voltage electric lines	43
Regulation 5 – Exception to minimum clearance space for small branches around insulated low voltage electric lines	43
Regulation 6 – Exception to minimum clearance space for small branches around uninsulated low voltage electric lines in low bushfire risk areas.....	43
Regulation 8 – Responsible person may cut or remove hazard trees	43
Schedule 1 Part 2 Division 2	44
Regulation 10 – Cutting or removal of: native trees; trees listed in a planning scheme to be of ecological, historical or aesthetic significance; trees of cultural or environmental significance must be minimised.....	44
Regulation 11 – Cutting or removing habitat for threatened fauna	44
Schedule 1 Part 2 Division 4 Regulation 20 – Duty relating to the safety of cutting or removal of trees close to an electric line	46
Appendix 1 Detailed locality maps 1-8 for high voltage (HV) electric lines, low voltage (LV) electric lines and hazardous bushfire risk areas (HBRA).....	47
Appendix 2 List of streets in the Nillumbik declared area with overhead electric lines	56
Appendix 3 Detailed locations of hazardous bushfire risk areas within the Nillumbik Declared Area.....	65
Appendix 4 Electric Line Clearance Pre Works Audit form	68
Appendix 5 Electric Line Clearance Post Works Audit Form	69
Appendix 6 Nillumbik Council’s reactive tree request process	70

Introduction

The Shire of Nillumbik is a 'green wedge' municipality located to the northeast of Melbourne. The natural environment has attracted a community with a strong appreciation of the Shire's 'green wedge' role, landscape value, unique character of native vegetation, and which has a clear desire to protect those values which contribute to and affect their quality of life. Development and planning principles therefore incorporate retention of indigenous vegetation, flora and fauna habitats, and where possible minimal landform changes. The mix of semi-rural and residential landscape, abutting rural and natural bushland does however place the community at risk. Native plants and bushland are fire prone, and when interwoven with residential development, require careful and vigilant vegetation management programs.

Nillumbik Shire Council's Electric Line Clearance Management Plan (ELCMP) addresses the Electricity Safety (Electric Line Clearance) Interim Regulations 2025 requirements and ensures programs for vegetation management to minimise fire risk. The responsibility of Council is to satisfy electrical safety requirements, provide the community with protection, and ensure environmental and vegetation values are not diminished.

The Plan reflects a clear understanding of regional vegetation qualities, character and fire risk. Actions are based on sound and knowledgeable vegetation management practice to deliver outcomes that satisfy stakeholders and fulfil principles of environmental management.

This Plan has been written so that each section responds to the requirements of the Electricity Safety (Electric Line Clearance) Interim Regulations 2025, Part 2 – Prescribed Code of Practice and related provisions, 9 Preparation and submission of management plans.

References

This Plan should be considered with regard to and refers to the following key documents for tree pruning and removal for Nillumbik Shire Council:

- Nillumbik Tree Management Policy 2018 (the Policy)
- Nillumbik Tree Management Guidelines 2018 (the Guidelines)
- Nillumbik Contract No 2425-070 Tree Pruning and other Associated Services (the Contract)
- Nillumbik Customer Complaints Policy

Regulation 9 Preparation and submission of management plans

The following sections – ‘Sub regulation 2’ – are as per ‘Part 2—Prescribed Code of Practice and related provisions’, Regulation 9 (Preparation of management plan) of the Electricity Safety (Electric Line Clearance) Interim Regulations 2025.

Sub regulation 2

Nillumbik’s Parks and Open Space Coordinator is responsible for reviewing, amending and facilitating the authorisation of the plan by the CEO by 31st March each year for the following financial year.

The following action plan commencing in May prior outlines all necessary steps, deadlines and verification that the process is occurring and on track. This action plan is implemented by the Parks and Open Space Coordinator and monitored by the Operations Centre Lead.

Annual ELCMP review timetable

Action	Who	Deadline
Send IT request for IT to contact AusNet Services for updated data for the following year	Parks and Open Space Coordinator	July
Send IT request for IT to contact Spatial Information Services for updated HBRA/LBRA data for the following year	Parks and Open Space Coordinator	July
Contact AusNet Services and Spatial Information Services for updated GIS data	GIS Administrator	August
Receive updated GIS data, update in system and notify Parks and Open Space Coordinator	GIS Administrator	October
Notify Operations Centre Lead, Manager Infrastructure and Director Operations and Infrastructure that review/update of plan has commenced	Parks and Open Space Coordinator	1 February

Check for amendments to regulations	Parks and Open Space Coordinator	1 February
Review and update plan in line with regulations and ensure standards, policies, training qualifications and documents are current.	Parks and Open Space Coordinator	31 March
Review final draft prior to submission for authorisation	Operations Centre Lead and Manager Infrastructure	13 June
Approve updates to plan and facilitate authorisation by the CEO	Manager Infrastructure, Director Operations and Infrastructure	24 June
Authorisation of plan	CEO	26 June 2025
Place plan on website	Parks and Open Space Coordinator	Within two business days of approval of plan by the CEO

Any request from Energy Safe Victoria to Nillumbik Shire Council to submit the Electric Line Clearance Management Plan is registered in Council's correspondence system and processed as follows:

- CEO, Chief Operating Officer Operations, Manager Operations Centre are notified by the Records Unit of the request from Energy Safe Victoria
- Manager Operations Centre assigns correspondence to the Parks and Open Space Coordinator

Parks and Open Space Coordinator drafts return correspondence to accompany the Electric Line Clearance Management Plan on behalf of the CEO and facilitates approval from the CEO through the Chief Operating Officer Operations and Manager Operations Centre.

The Plan is submitted in the requested format within 14 days of request.

Responsible persons within Council

(a) Name, address and telephone number of the responsible person:

Name: Carl Cowie
Position: CEO, Nillumbik Shire Council
Address: Civic Drive, Greensborough (PO Box 476 Greensborough 3088)
Telephone: 9433 3111

(b) Name, position, address and telephone number of the person who was responsible for the preparation of the management plan:

Name: Andrew Solum
Position: Senior Supervising Arborist
Address: Civic Drive, Greensborough (PO Box 476 Greensborough 3088)
Telephone: 9433 3520

(c) Name, position, address and telephone number of the persons who are responsible for carrying out the management plan:

Name: Lachlan Caple
Position: Urban Forest Planner
Address: Civic Drive, Greensborough (PO Box 476 Greensborough 3088)
Telephone: 9433 3325

(d) The telephone number of a person who can be contacted in an emergency that requires clearance of a tree from an electric line that the responsible person is required to keep clear of trees:

Operations Centre telephone (business hours): **9433 3111**
Emergency paging service telephone (after hours): **9433 3334**

The objectives of the management plan

The objective of this management plan is to outline how Nillumbik Shire Council achieves the requirements of the Electricity Safety (Electric Line Clearance) Interim Regulations 2025 within the Nillumbik Declared Area.

Nillumbik Shire Council will fulfil its role as a Responsible Person and comply with the Electricity Safety (Electric Line Clearance) Interim Regulations 2025 (Regulations), particularly Schedule 1 Code of Practice for Electric Line Clearance (Code) and initiate procedures and practices accordingly, to:

- maintain minimum clearance between vegetation and electric lines in the area for which Council is responsible, to help ensure electrical safety, reliability of supply and to minimise fire starts
- ensure that vegetation clearance works are undertaken according to the appropriate standards to protect tree health, local amenity, culturally significant vegetation, habitat for native wildlife and the natural environment
- ensure that appropriately qualified staff are undertaking electric line vegetation clearance works
- ensure workplace safety
- ensure that affected people are informed of the electric line vegetation clearance works
- ensure that there is clear management processes for Council, contractors, distribution businesses, affected people and stakeholders to share information, communicate issues and resolve disputes.

All objectives are reviewed annually in line with the review and update of the Plan. Refer to sections (i) and (n) for outline of implementation, monitoring and auditing of objectives and key performance indicators, for which the Parks and Open Space Coordinator is responsible.

(e) The land to which the management plan applies

The area for which Council is responsible is predominantly undulating hills and well treed. It takes in the suburbs of Eltham, Eltham North, Diamond Creek, Plenty and Greensborough, with a small number of streets in Research and Wattle Glen. It is primarily made up of roadside reservations and plantations. Reservations are variable in width and proximity to overhead lines or may be traversed by electric lines in a consistent and parallel line. These reservations are predominantly occupied by

eucalypts and acacias, but also other native and introduced species. Plantations are traversed by high or low voltage electric lines, aerial bundle cables or feeders to properties.

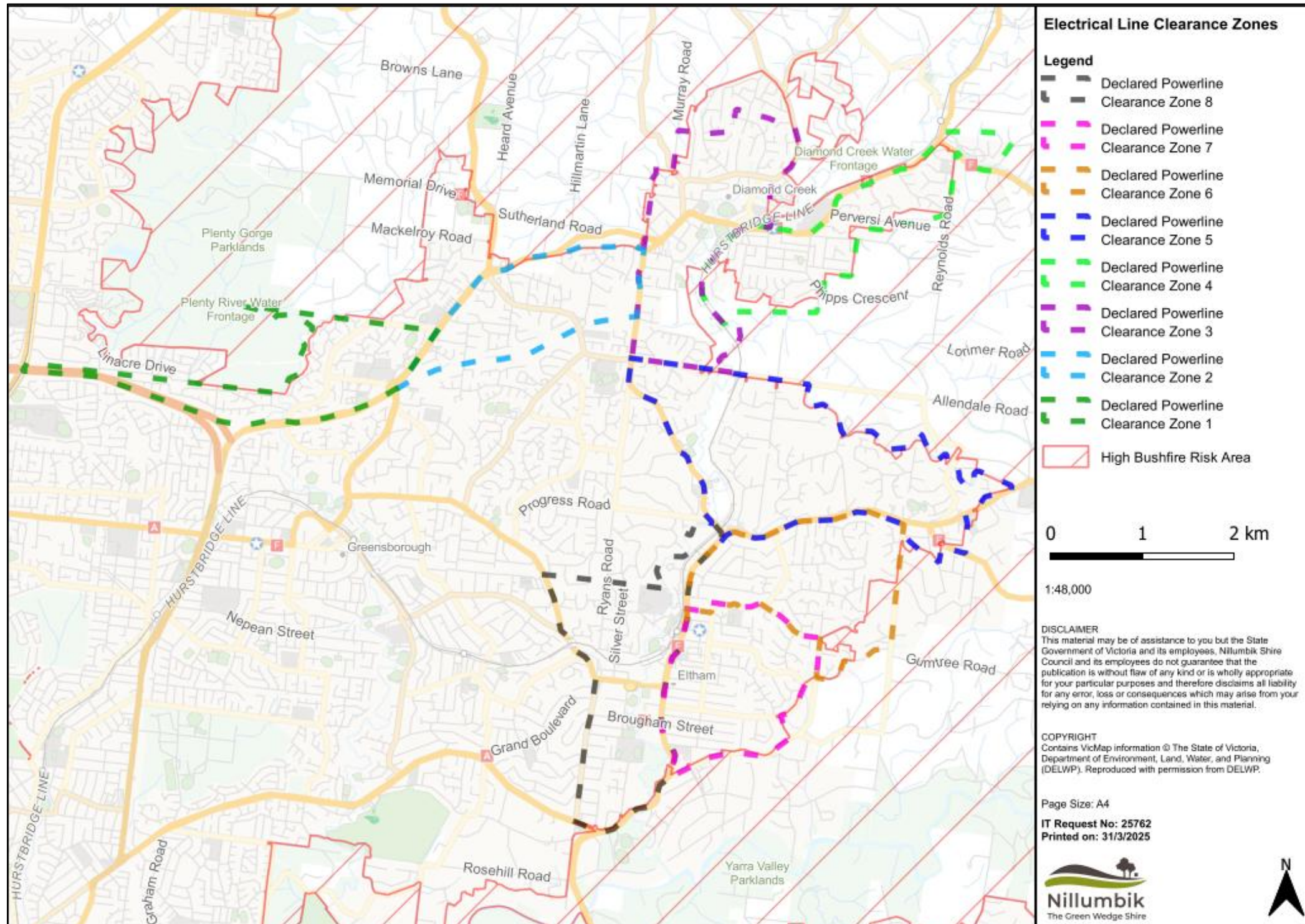
AusNet Services is responsible for vegetation clearance and management on private land.

The following key map (page 12) provides detailed information about the area of Nillumbik's management responsibility (declared area), with supporting appendices as follows:

- Appendix 1: Detailed maps of declared area
- Appendix 2: A list of streets and lengths where Nillumbik is responsible for electric line clearance
- Appendix 3: A detailed list of streets and adjacent property addresses in the HBRA where Nillumbik is responsible for electric line clearance

Map: Nillumbik Declared Area and management zones within the declared area

This map shows the Nillumbik Declared Area for the purpose of electric line vegetation clearance. The map shows the management zones which relate to the Nillumbik works program. Refer to Appendix 1 for Maps 1 to 8 which provide greater detail in relation to locality, presence of high voltage lines, low voltage lines and hazardous bushfire risk areas.



(f) Any hazardous bushfire risk areas and low bushfire risk areas in the land referred to in paragraph (f);

Nillumbik Shire Council's declared area is nearly entirely in a Low Bushfire Risk Area (LBRA), however there are parts of roads at the edge of the declared area that are in the Hazardous Bushfire Risk Area (HBRA). Fire management within the declared area and clearance around electric lines is a shared responsibility between AusNet Services and Nillumbik Shire Council.

Nillumbik Shire Council is responsible for vegetation clearance and management of roadsides within the HBRA and LBRA. Council meets with CFA annually to review and verify HBRA. Council contacts CFA's Spatial Information Services and AusNet Services annually for updated data.

AusNet Services has provided detailed information about the HBRA spans within the Nillumbik declared area.

Refer to Appendix 1 for the detail of HBRA and LBRA.

(g) The location of each area that the responsible person knows contains a tree that the responsible person may need to cut or remove to ensure compliance with the Code and that is:

(i) Indigenous to Victoria

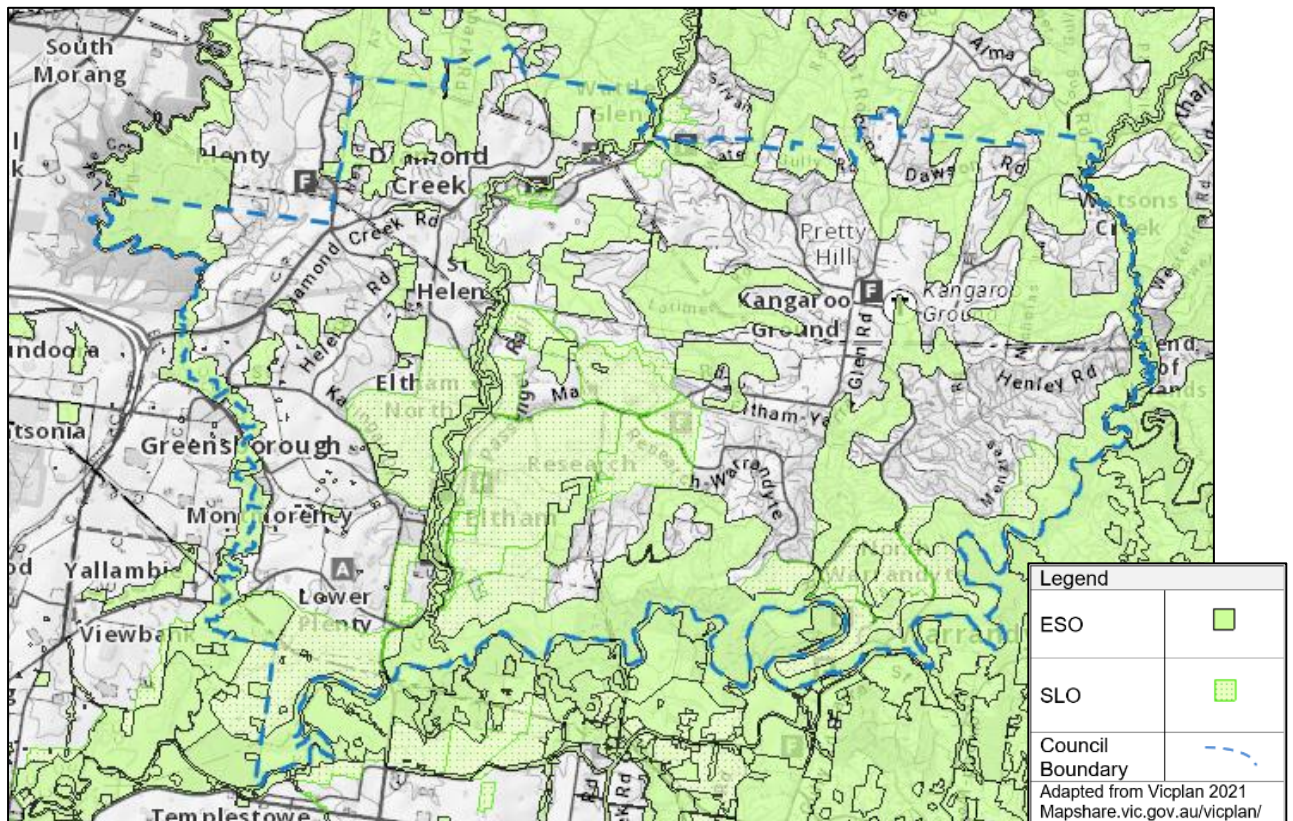
The Nillumbik Roadside Management Plan 2025 incorporates actions to protect, conserve and manage native grasslands and grassy woodlands, indigenous vegetation remnants, rare threatened or significant flora/fauna, regeneration of native plant communities, special environment areas, wildlife habitat, wildlife corridors, wetlands and wildlife crossings.

It is estimated that approximately 88 per cent of the vegetation along streets within the declared area is native. 54 per cent of this vegetation is indigenous to the Shire. Of the indigenous vegetation along the streets, it is dominated by *Eucalyptus* spp. (69 per cent) and *Acacia* spp. (18 per cent). The dominate *Eucalyptus* species along streets in the declared area are *Eucalyptus melliodora* (35 per cent of *Eucalyptus* spp.), *Eucalyptus polyanthemos* (21 per cent), *Eucalyptus goniocalyx* (20 per cent) and *Eucalyptus macrorhyncha* (6 per cent).

The following maps are taken from the Roadside Management Plan 2025 and Council's GIS. This is in line with Nillumbik's Environmental Significance Overlay and/or Significant Landscape Overlay.

<https://www.planning.vic.gov.au/schemes-and-amendments/browse-planning-scheme/planning-scheme?f.Scheme%7CplanningSchemeName=Nillumbik>

Map of Environmental Significance Overlay and Significant Landscape Overlay



The conservation value legend for the following maps is defined as follows:

- **High Conservation Value:** Relatively low level of disturbance, various vegetation layers present although not necessarily all, native vegetation occurs across much of the area, low weed levels, supports a range of habitats, may form a wildlife corridor, is linked to other native vegetation (adjoining), or may provide habitat for rare or threatened flora, fauna species, or EVCs, or may have other significant features such as areas of cultural significance.
- **Medium Conservation Value:** More than 25 per cent indigenous ground storey but there is considerable invasion of weeds and/or other disturbance, native vegetation occurs mainly in patches, some capacity for natural regeneration, few other habitat features.
- **Medium-Low Conservation Value:** Contains highly disturbed indigenous vegetation, with a ground storey comprising mostly weeds (i.e. less than 25 per cent indigenous ground storey). Often only indigenous canopy trees remaining and a patchy mid-storey of shrubs and small trees, few other habitat features.
- **Low Conservation Value:** Poor condition substantially disturbed and or modified, little if any native vegetation on site or adjacent, low natural regenerative capacity and few habitat features.

Council's conservation value mapping references the following resources:

Department of Energy, Environment and Climate Action

<https://www.deeca.vic.gov.au>

NatureKit 2.0, Victorian State Government, Department of Energy Environment and Climate Action

<https://maps2.biodiversity.vic.gov.au/Html5viewer/index.html?viewer=NatureKit>

Native Vegetation Regulation Map (NVR Map)

<https://www.environment.vic.gov.au/native-vegetation/NVRMap>

Environment Protection and Biodiversity Conservation, Protected Matters Search Tool, Australian Government, Department of Agriculture, Water and the Environment

<https://www.environment.gov.au/epbc/protected-matters-search-tool>

Flora and Fauna Guarantee Act 1988 Threatened List March 2025

https://www.environment.vic.gov.au/_data/assets/pdf_file/0027/741627/FFG_Threatened_List_March_2025.pdf

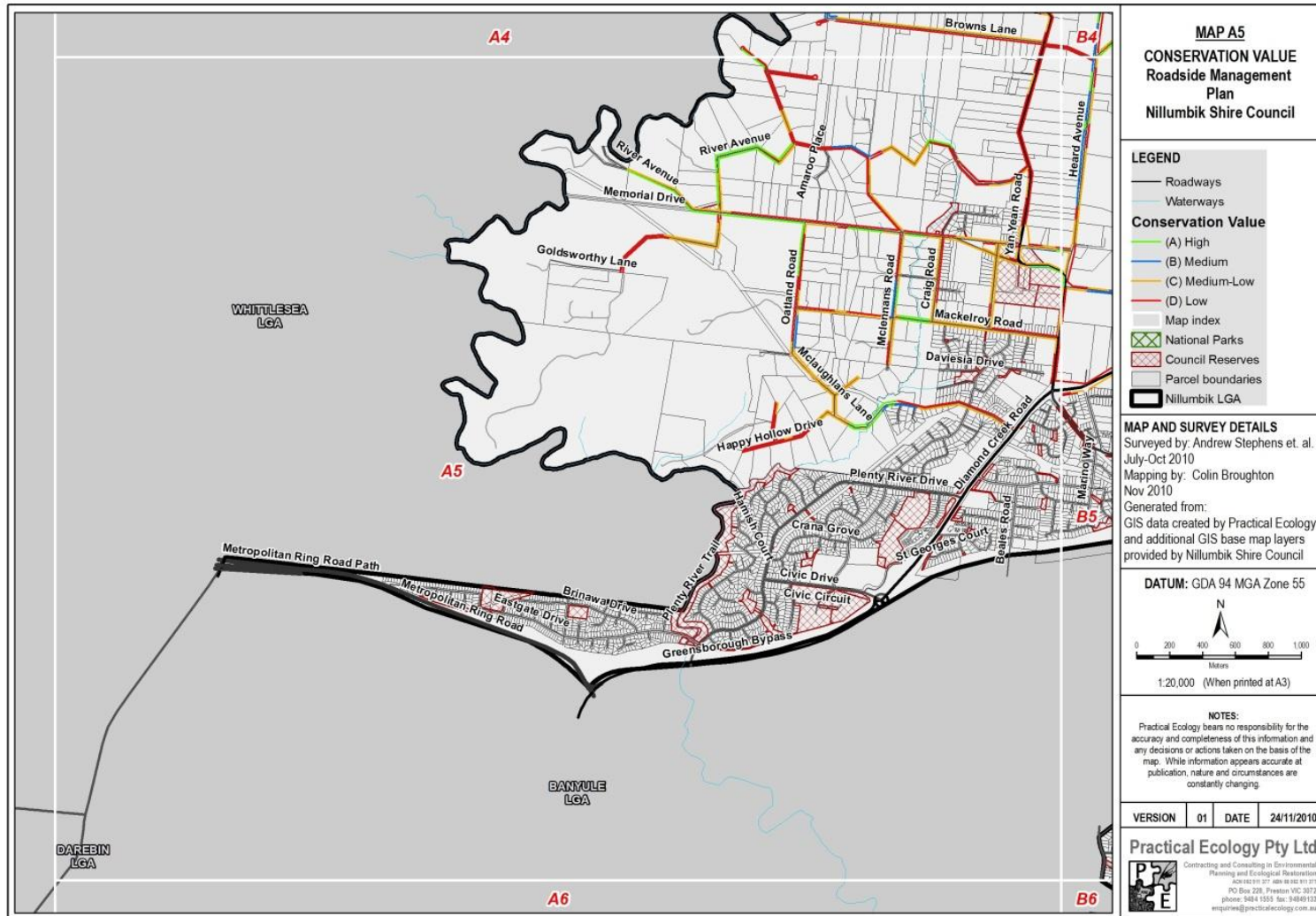
Flora and Fauna Guarantee Act 1988

<https://www.legislation.vic.gov.au/in-force/acts/flora-and-fauna-guarantee-act-1988/049>

Flora and Fauna Guarantee Amendment Act 2019

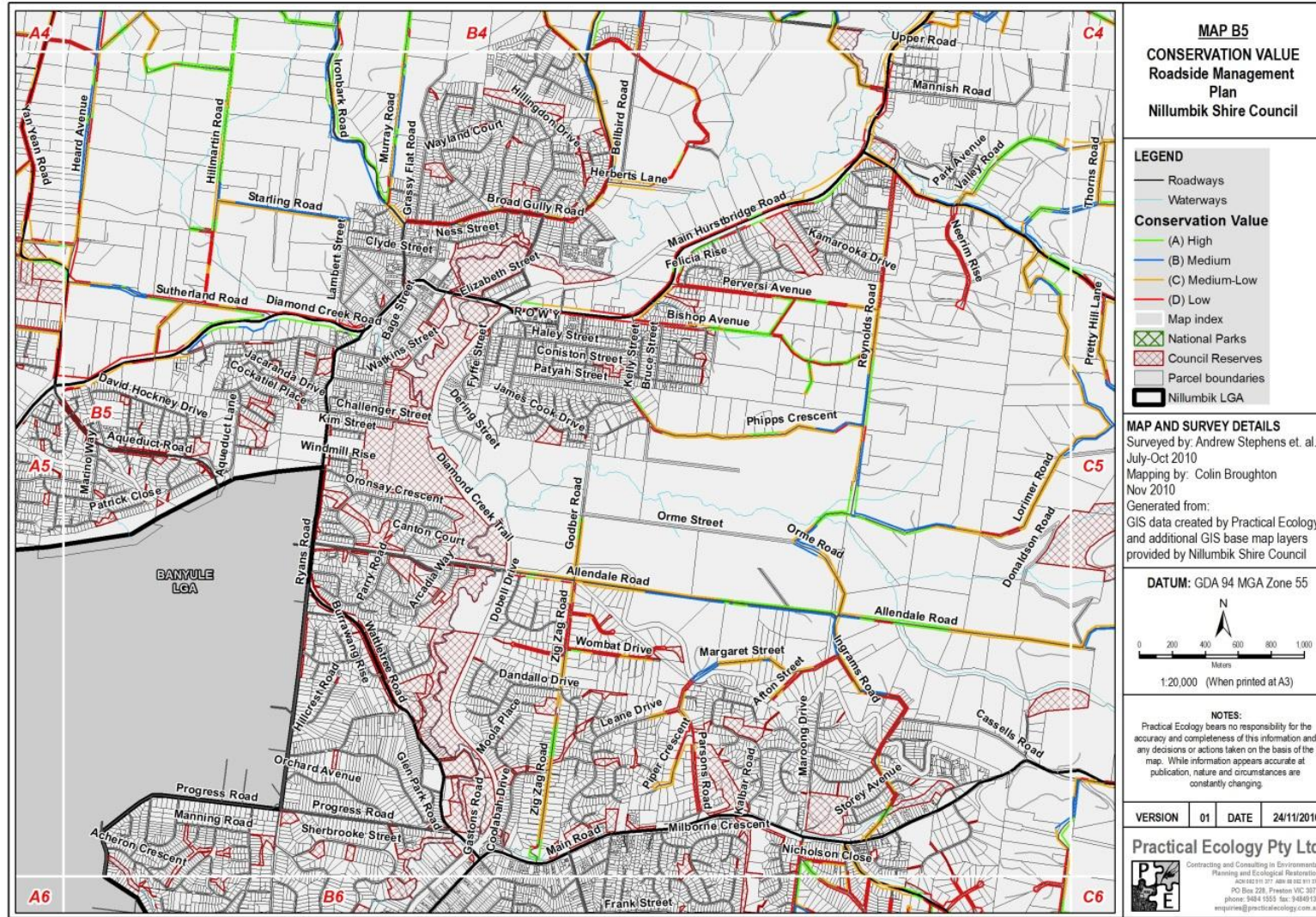
<https://www.legislation.vic.gov.au/bills/flora-and-fauna-guarantee-amendment-bill-2019>

Map of roadside vegetation conservation value- Nillumbik Declared Area



Version: 12.0
 Revision date: March 2026
 Warning: Uncontrolled when printed

Map of roadside vegetation conservation value- Nillumbik Declared Area

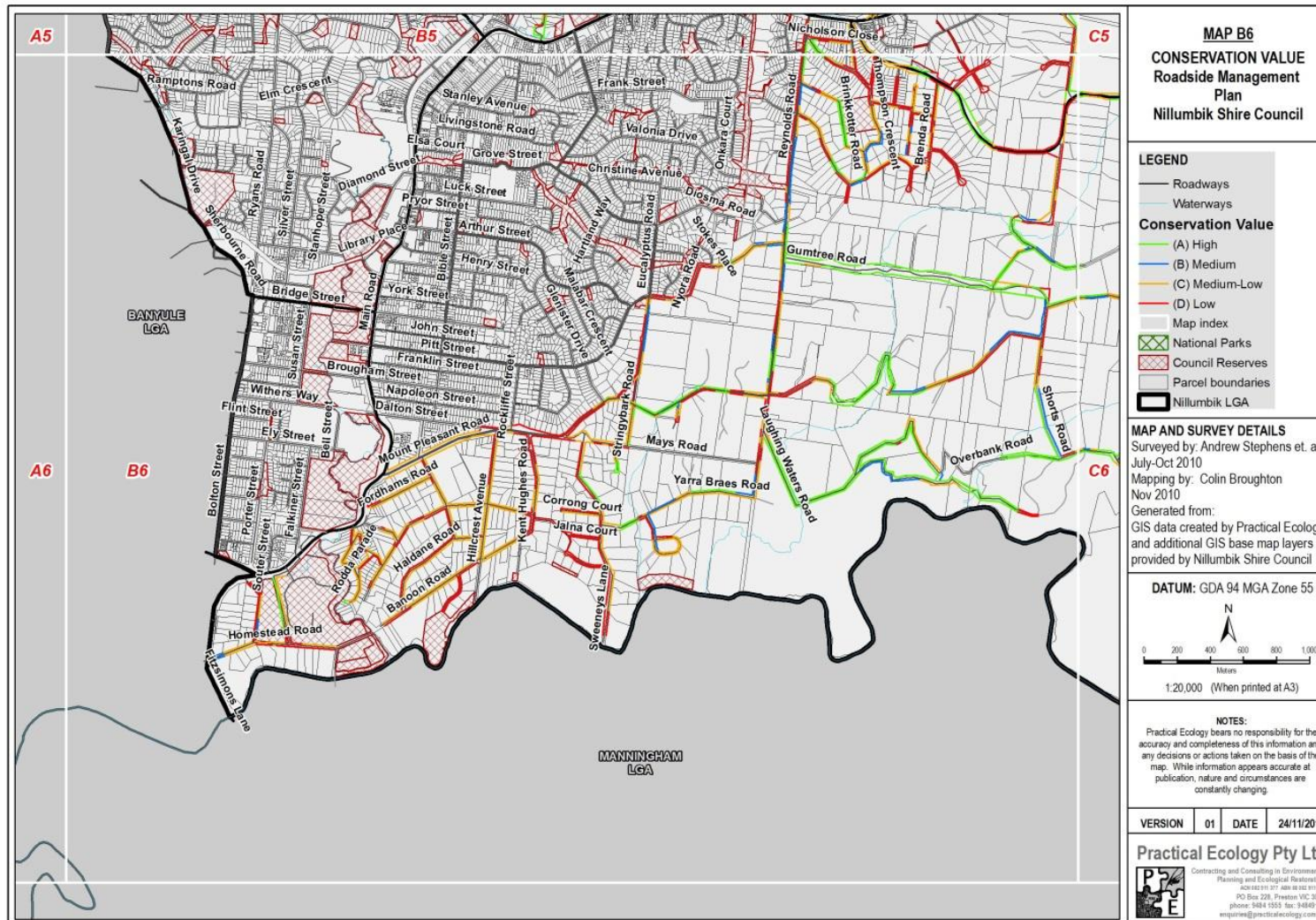


Version: 12.0

Revision date: March 2026

Warning: Uncontrolled when printed

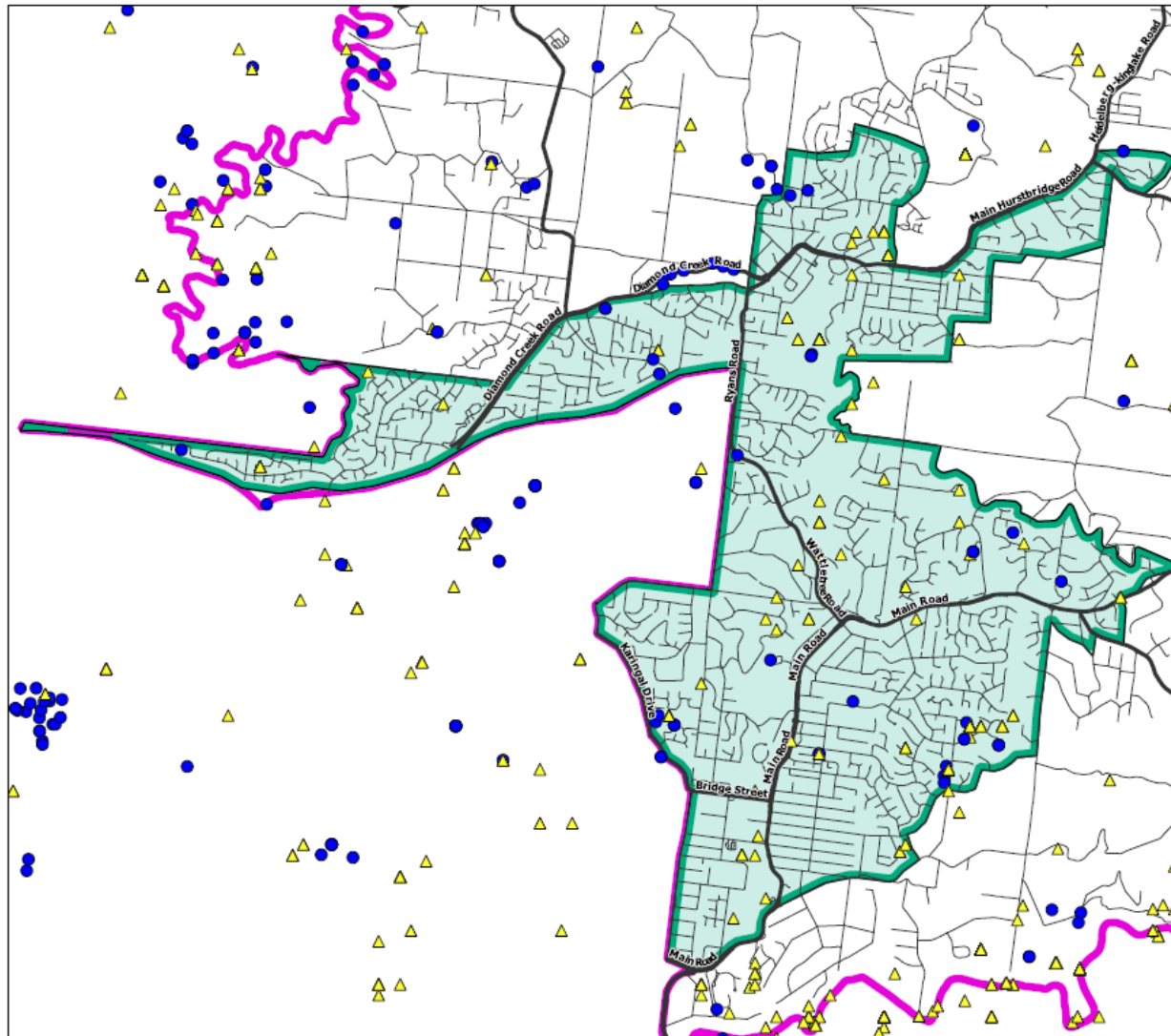
Map of roadside vegetation conservation value- Nillumbik Declared A



rea

Version: 12.0
 Revision date: March 2026
 Warning: Uncontrolled when printed

Map of significant flora and fauna – Nillumbik Declared Area



Significant flora and fauna
Within declared area

Legend

- ▲ Significant fauna records
- Significant flora records
- Roadways
- Declared Powerline Clearance Area
- Shire Boundary

1:36,000 @ A3

IT Request No: NSCIT-11677
Printed on: 7/4/2016




Version: 12.0

Revision date: March 2026

Warning: Uncontrolled when printed

(ii) Listed in the planning scheme to be of ecological, historical or aesthetic significance

The following is a list of trees identified in the heritage overlay and within the declared area within the vicinity of electric lines, which will be assessed separately to determine pruning cycles. If the need arises for alternative mechanisms, approval will be sought from Energy Safe Victoria in accordance with clause 31 of the Code.

Type of tree	Address	Zone
London Plane Trees (12)	Avenue of Honour, Main Road – between Brougham Street and Dalton Street and Withers Way, Eltham https://vhd.heritagecouncil.vic.gov.au/places/126641	7 and 8
Manna Gums (14)	Eltham Watering place Reserve (Wingrove Park), 645 Main Road, Eltham https://vhd.heritagecouncil.vic.gov.au/places/63522	8

(iii) A tree of cultural or environmental significance

The following table is a Council list of significant trees within the declared area within the vicinity of electric lines, which will be assessed separately to determine pruning cycles.

Type of tree	Address	Zone
<i>Eucalyptus melliodora</i> (28)	1120-1186 Main Road, Eltham	6
<i>Eucalyptus leucoxylon</i> subsp. <i>Connata</i>	Opposite 24 Pipers Crescent, Eltham	5
<i>Eucalyptus rubida</i>	47 Arthur Street, Eltham	7

(h) The means which the responsible person is required to use to identify a tree of a kind specified in section (g)(i), (ii) or (iii)

Section (h) of this Plan will be reviewed and updated annually. Maps will be checked and updated if required. Council does not require a planning permit for electric line clearance works within the declared area within the ESO or SLO.

Contractors contact Council if there are any site indicators that a tree may have significance if they haven't already been alerted to it by Council. Before any works are undertaken on old mature indigenous plants, trees are inspected. In the event a significant tree is identified, no pruning shall occur without further consultation with Council.

Nillumbik Shire Council does not currently have an inventory of its tree population and has no immediate plans to create one. Trees are identified by a qualified arborist with knowledge of indigenous, native and exotic trees. Council staff also refer to maps detailed in section (g) and the relevant planning overlays and GIS to ensure that minimal impact is made in areas of cultural, historical, botanical, ecological or habitat significance for rare or endangered species.

Trees are identified and managed in line with the Nillumbik Tree Management Policy and Guidelines 2018 (<https://www.nillumbik.vic.gov.au/Explore/Environment/Natural-environment/Plants-and-trees/Trees>) and Roadside Management Plan 2025 (<http://www.nillumbik.vic.gov.au/Living-in/Roads-drains-and-paths>).

(i) The management procedures that the responsible person is required to adopt to ensure compliance with the Code, which must:

Council will ensure that, at all times, no part of a tree for which Council has clearance responsibilities is within the minimum clearance space for the relevant span (Code cl 3(1)).

- (i) Include details of the methods proposed to be adopted for managing trees and maintaining a minimum clearance space as required by the Code**

The Shire of Nillumbik declared area has been divided into eight defined management zones (refer to section (f) for the key location map and Appendix 1 for detailed zone maps).

Council has an annual electric line clearance program, which is divided into two cycles. Vegetation around low voltage electric lines are pruned on a two-year cycle, with zones 1-5 pruned one year and zones 6-8 pruned the alternate year. Vegetation

around high voltage electric lines and in Hazardous Bushfire Risk Areas (HBRA) is pruned annually.

The goal of pruning to ensure that regrowth into the clearance space does not occur within the pruning cycle.

Current biennial schedule summary

The following provides a summary of the cyclical works program:

Action	Details	Timing	KPI	Who
Inspections	<p>Annual</p> <p>High voltage – Zone 1-8</p> <p>HBRA – Zone 1-8</p> <p>Biannual</p> <p>2026</p> <p>Low voltage – Zone 6-8</p> <p>2027</p> <p>Low voltage – Zone 1-5</p>	May-June	Inspection data received, reviewed and uploaded by 1 July	Contractor (Active Tree Services)
Notification to community	Written notice on Council’s website about electric line vegetation clearance works at least 14 days and not more than 60 days prior to work crews commencing works.	Mid-June	Ad placed on website by mid-June – at least 14 days and not more than 60 days prior to works	Urban Forest Planner / Communications

Pruning works	<p>High voltage – Zones 1-8</p> <p>HBRA – Zones 1-8</p> <p>2026</p> <p>Low voltage – Zone 6-8</p> <p>2027</p> <p>Low voltage – Zone 1-5</p>	<p>HBRA</p> <p>1 July – 1 September</p> <p>HV & LV 1 September –28 February</p>	<p>HBRA areas completed by 1 September</p> <p>HV & LV completed by 28 February</p>	Contractor (Active Tree Services)
Audit of works	<p>High voltage – Zones 1-8</p> <p>HBRA – Zones 1-8</p> <p>2026</p> <p>Low voltage – Zone 1-5</p> <p>2027</p> <p>Low voltage – Zone 6-8</p>	<p>HBRA</p> <p>September</p> <p>HV & LV</p> <p>February</p>	<p>Sample audit of HBRA undertaken by 31 September</p> <p>Sample audit of HV / LV completed by 28 February</p>	Urban Forest Planner
Follow up	Any non-compliant works required following audit		Works completion data received and uploaded from contractors within four weeks of completion of the works	Contractor (Active Tree Services)

Inspection

Prior to the year's pruning works, Council inspects the following within the declared area:

- the zones scheduled for pruning that year (low voltage electric lines)
- vegetation around high voltage electric lines
- vegetation around electric lines in Hazardous Bushfire Risk Areas

The HBRA areas are inspected by a suitably qualified person to identify required works and program these works to be completed prior to the commencement of the upcoming fire season. Inspections include recording excessive regrowth which may encroach on the clearance space before the next scheduled prune. These trees are prioritised and scheduled towards the start of the year's pruning program.

The LBRA areas are inspected by a suitably qualified person to identify required works and program these works to be completed within the specified timeframe. Inspections include recording excessive regrowth which may encroach on the clearance space before the next scheduled prune. These trees are prioritised and scheduled towards the start of the year's pruning program.

The inspection record is street by street and the adjacent property number is used as an indicator of where pruning is required.

Tree pruning, removal and managing regrowth

The works are undertaken by suitable contractors with the required qualifications and training, in accordance with Nillumbik Contract No 2425-070 *Tree Pruning and other Associated Services* (the Contract). Refer to *Section 4.3 Electric Line Clearance* of the specifications.

Trees are pruned to the required clearance spaces as outlined in Schedule 1 Part 3 – Minimum clearance spaces of the Electricity Safety (Electric Line Clearance) Interim Regulations 2025. Schedule 2 and consultation with AusNet Services provides guidance on additional allowance for sag and sway.

All pruning will take place in accordance with AS 4373-2007 Pruning of Amenity Trees, and where possible, pruning will be undertaken in a way that minimises damage to understorey vegetation, as specified in clause 4.1.1 'Standard of pruning works' and 11.3 'Guidelines: pruning for electric line clearance' of the Contract.

The contractor undertaking the pruning will determine the required level of pruning on each tree by considering the following factors: tree species and likely growth;

pruning cycle; minimum clearance space including sag and sway where required, and pruning standards. In time, as data is collected and regrowth rates identified, less pruning may provide appropriate clearance.

Based on an expected regrowth of 0.4-1 metre per year, on average, trees will be pruned back at least 1-2 metres from the required minimum clearance space.

Pruning around low voltage lines in Low Bushfire Risk Areas

Where there are low voltage lines in Low Bushfire Risk Areas there is at least 1000mm minimum clearance with additional allowance for sag and sway where required as per Schedule 2 of the Code and in consultation with AusNet Services.

Code cl 25 & Sch.2 Graph 2 - Minimum clearance space (perpendicular to conductor):

- First and last sixths of span: 1000 mm.
- Middle two-thirds: if $SD \leq 45$ m \rightarrow 1000 mm; if $45 < SD \leq 100$ m \rightarrow $1000 + ((SD - 45) \times (1500/55))$ mm; if $SD > 100$ m \rightarrow 2500 mm.
- For $SD > 100$ m, add an additional distance that allows for conductor sag and sway (see Method for additional distance).

The total pruning distance to maintain the minimum clearance for the two year pruning cycle will be at least a further 1-2 metres based on a cumulative understanding of the regrowth at that location which is recorded during the inspection above and also to achieve the AS 4373-2007 Pruning of Amenity Trees standard to protect the health, amenity and stability of the tree.

Pruning around high voltage lines in Low Bushfire Risk Areas

Where there are high voltage lines in Low Bushfire Risk Areas there is at least 1500mm minimum clearance with additional allowance for sag and sway where required as per Schedule 2 of the Code and in consultation with AusNet Services.

Code cl 26 & Sch.2 Graph 3] Minimum clearance space (perpendicular to conductor):

- First and last sixths of span: 1500 mm.
- Middle two-thirds: if $SD \leq 45$ m \rightarrow 1500 mm; if $45 < SD \leq 100$ m \rightarrow $1500 + ((SD - 45) \times (1000/55))$ mm; if $SD > 100$ m \rightarrow 2500 mm.
- For $SD > 100$ m, add an additional distance that allows for conductor sag and sway (see Method for additional distance).

The total pruning distance to maintain the minimum clearance for the annual pruning cycle will be at least a further 1-2 metres based on a cumulative understanding of the regrowth at that location which is recorded during the inspection above and also to

achieve the AS 4373-2007 Pruning of Amenity Trees standard to protect the health, amenity and stability of the tree.

Pruning around low voltage lines in High Bushfire Risk Areas

Where there are low voltage lines in Hazardous Bushfire Risk Areas there is at least 1500mm minimum clearance with additional allowance for sag and sway where required as per Schedule 2 of the Code and in consultation with AusNet Services.

Code cl 28 & Sch.2 Graph 5] Minimum clearance space (perpendicular to conductor):

- First and last sixths of span: 1500 mm.
- Middle two-thirds: if $SD \leq 45 \text{ m} \rightarrow 1500 \text{ mm}$; if $45 < SD \leq 500 \text{ m} \rightarrow 1500 + ((SD - 45) \times (500/303)) \text{ mm}$; if $SD > 500 \text{ m} \rightarrow 2250 \text{ mm}$.
- Add an additional distance that allows for conductor sag and sway (mandatory under cl 28(2)(a)).

The total pruning distance to maintain the minimum clearance for the two year pruning cycle will be at least a further 1-2 metres based on a cumulative understanding of the regrowth at that location which is recorded during the inspection above and also to achieve the AS 4373-2007 Pruning of Amenity Trees standard to protect the health, amenity and stability of the tree.

Pruning around high voltage lines in Hazardous Bushfire Risk Areas

Where there are high voltage lines in Hazardous Bushfire Risk Areas there is at least 1500mm minimum clearance with additional allowance for sag and sway where required as per Schedule 2 of the Code and in consultation with AusNet Services.

Code cl 29 & Sch.2 Graph 6] Minimum clearance space (perpendicular to conductor):

- First and last sixths of span: 2250 mm.
- Middle two-thirds: if $SD \leq 45 \text{ m} \rightarrow 2250 \text{ mm}$; if $45 < SD \leq 350 \text{ m} \rightarrow 2250 + ((SD - 45) \times (750/305)) \text{ mm}$; if $SD > 350 \text{ m} \rightarrow 3000 \text{ mm}$.
- Add an additional distance that allows for conductor sag and sway (mandatory under cl 29(2)(a)).

The total pruning distance to maintain the minimum clearance for the annual pruning cycle will be at least a further 1-2 metres based on a cumulative understanding of the regrowth at that location which is recorded during the inspection above and also to achieve the AS 4373-2007 Pruning of Amenity Trees standard to protect the health, amenity and stability of the tree.

Tree removal

Tree removal may occur if the tree is of immediate risk in terms of the tree or branches falling, or if the growth rate of an individual tree will impact on the clearance space in less than one year. Including vegetation in HBRA found in clearance space after declaration.

Small sapling trees may also be removed that have grown since the last pruning cycle to assist with long-term vegetation management under the electric lines. Trees may also be removed if the proposed pruning works will cause major disfigurement, instability, decline or death of the tree. Removal will only take place after inspection and recommendation by a qualified arborist.

Unsuitable species are identified and replaced in line with the Nillumbik Tree Management Guidelines 2018, Section 4. Section 6.6 of the Guidelines lists recommended street and reserve tree species if unsuitable species are required to be removed and replaced. A long-term strategy encourages appropriate planting under and surrounding electric lines so that the vegetation does not encroach into the clearance space. In many cases, residents are able to plant on roadside reservations and plantations but must contact Council prior to undertaking works to ensure that it is appropriate and will not cause any future problems.

Council will regularly review its pruning cycles based on vegetation significance categories and tree data gathered from the inspection, works and audit records.

Auditing works

A sample audit of the works is undertaken by Council to ensure that they comply with AS 4373-2007 Pruning of Amenity Trees and the Code. The audit inspections are recorded on a checklist (Appendix 4 and 5), which is filed and available for inspection upon request at the Nillumbik Operations Centre, 290 Yan Yean Road Plenty, between 8am and 4pm weekdays (not including public holidays). It is requested that 48 hours' notice be given.

The purpose of the works audit is to record the performance of the contractor in relation to the objectives of the annual electric line clearance program. This includes recording instances where:

- the minimum clearance space plus allowance for sag and sway as well as additional clearance for regrowth has not been achieved
- vegetation clearance works have not been undertaken according to the appropriate standards

Non-conformances recorded during the audit process are referred to the contractor in writing with a timeframe for completion.

Refer to section (o) below for the process to determine cause of and follow up non compliances arising from audit processes. General conditions of Contract 2425-070 *Tree Pruning and other Associated Services* clause S12 provides a dispute resolution process.

Maintaining records

Inspections, works and audits are recorded in spreadsheet and maintained in Council's document management system. The record has a master list of streets (see Table in (f) above) and the outcome of the inspection is recorded by reference to the property numbers, works are recorded by date and the audit is recorded with reference to completed work or further work required.

Liaison with the distribution business

Code cl 30] Transmission lines: Where any span in the declared area meets the Code's 'transmission line' definition (e.g., 66 kV supported on tower structures or adjacent to >66 kV), Council will apply the horizontal and vertical minimum clearance envelopes in cl 30 and confirm the classification annually with AusNet as part of the liaison process.

Council and AusNet Services will meet as required during the year. Ongoing agenda items include:

- Nillumbik Shire Council electric line clearance program for the year, including high voltage and suppression, live line and/or shutdown works
- Nillumbik Box Clearance and Hazard Tree Program including dates, timing and consultation
- Declared boundaries
- Any updates to HBRA within Council's declared area
- Spans greater than 45 metres and any changes to the total number of spans
- AusNet Services Electric Line Clearance Program for the year
- Hazard tree assessments, including timing and aligning programs
- General business
- Performance including any issues, non-conformance, clarifying processes, notification of works to each other
- Performance of contractors
- Provision of updated contact details

Regular communication regarding these issues will be facilitated through email, site meetings or telephone as required.

(ii) Specify the method for determining an additional distance that allows for cable sag and sway for the purposes of determining a minimum clearance space in accordance with Division 1 of Part 3 of the Code

Spans within the Nillumbik Declared Area where vegetation clearance is required are usually less than 45 metres. The additional cutting distance outlined in (j)(i) above has been determined using graphs 2, 3 and 4 provided in Schedule 2 of the Regulations and advice from AusNet Services.

Contractors are responsible for pruning to achieve the clearance space outlined in (j)(i) above. Where the contractor is uncertain about the span distance, they contact Council who will consult with AusNet Services in determining the span distance and minimum clearance.

The AusNet Services contact is Will Kerry, Stakeholder & Performance Manager, email will.kerry@ausnetservices.com.au

There is no requirement to interact with railway supply companies as there is no vegetation pruning requirement at the five locations in the Nillumbik declared area where electric lines cross railway lines. For completeness, these locations are:

Street	Suburb	Melway Ref
Diamond Street	Eltham	21 K4
Railway Road	Eltham	21 K2
Wattletree Road	Eltham	22 A2
Allendale Road	Diamond Creek	12 A10
Main Hurstbridge Road	Diamond Creek	12 A6

Council provides the additional distance information to the contractor who then performs the works. Council records these sag and sway calculations in Council's document management system where they will be maintained for at least five years.

The Parks and Open Space Coordinator is responsible for implementing the above processes. The Operations Centre Manager is responsible for verifying that processes are implemented. A random audit of the works will be undertaken by the

Council once programmed works are complete to ensure that the required works are occurring as a result of the above process.

The process will be reviewed annually.

(j) The procedures to be adopted if it is not practicable to comply with the requirements of AS 4373-2007 Pruning of Amenity Trees while cutting a tree in accordance with the Code:

Council contractors carry out works in accordance with Contract 2425-070 *Tree Pruning and other Associated Services*, clause 4.1.1 'Standard of pruning works' and 11.3 'Guidelines: pruning for electric line clearance' using equipment such as electrically tested EWPs and tree climbing with rope and harness, undertaken by arborist which have completed Cert II ESI training modules.

The definition of 'reasonably practicable' in reference to AS 4373-2007 Pruning of Amenity Trees is: 'A suitable qualified Arborist's opinion in relation to the pruning of a tree in respect to meeting both the code and the AS 4373-2007 Pruning of Amenity Trees'.

As per the Contract, when pruning works to meet the code will not comply with AS 4373-2007 Pruning of Amenity Trees the contractor will contact Council and inform them. An appropriate decision will then be made in conjunction with the Senior Supervising Arborist or Parks and Open Space Coordinator regarding retention or complete removal of the tree to comply with electrical line clearance requirements.

Once a decision on the required works has been made the Urban Forest Planner in conjunction with the Contractor will agree on appropriate plant and equipment required to complete the works.

Random site audits will be completed to ensure compliance to the code and AS 4373-2007 Pruning of Amenity Trees (refer to Appendix 4). Council will make the contractor aware of the results of the audit in writing.

If unacceptable works are identified, the Urban Forest Planner and or Senior Supervising Arborist will notify and meet with the contractor to discuss ways of resolving the dispute or difference, as per section 13 of the Contract.

The approved contractor will submit the required training and qualification information, as per sub regulation (p), prior to the financial year to which the plan applies and the plan will be updated during the review process. This includes verification that the current version of AS 4373-2007 Pruning of Amenity Trees is being applied. Meetings between the approved contractor and Council will be minuted and filed in Council's records management system.

(k) A description of each alternative compliance mechanism in respect of which the responsible person has applied, or proposes to apply, for approval under clause 31 of the Code;

Council does not intend to use or apply for any alternative compliance mechanisms. Pruning and removal is the only method used for electric line clearance work within the declared area. If the need arises to use other methods, Council will determine a suitable alternative compliance mechanism and seek approval from Energy Safe Victoria in accordance with clause 31 of the Code. This will be reviewed annually in line with the review of this Plan.

(l) The details of each approval for an alternative compliance mechanism that:

(i) The responsible person holds

N/A

(ii) Is in effect

N/A

(m) A description of the measures that must be used to assess the performance of the responsible person under the management plan

Achievement of pruning cycles, vegetation conservation, enhancement, and avoidance of public and property loss resulting from fire shall be measured by the following performance measures, as well as successful completion of actions outlined in section (j) and (o) of this Plan. The Senior Supervising Arborist is responsible for monitoring the performance measures and successful completion of actions outlined in section (j) and (o), which will then be assessed by the Operations Centre Manager. Council will be considered to be performing if:

- Works are planned utilising annual inspection data, previous years data on workload (locations, hours) provided by contractors as well as pruning requests and non-conformances from residents and the distribution business. Supply outage information is not supplied to Council by the distribution business. The purpose of planning is to ensure that Council budgets appropriately to undertake works
- The Contract of the HBRA work program is to be completed by declaration of fire season, an annual audit will then be completed. The LBRA works program requires completion of works within the specified timeframe and there are daily updates of JSAs and staff responsible on the line between the contractor and Nillumbik Shire Council.

- Electric line clearances are in accordance with the Code
- Requests for clearance/non-compliance from the distribution business are minimised and, by agreement, incorporated into the annual clearance works or if urgent completed within the agreed timeframe. These are recorded and monitored in Council's document management system
- Complaints are recorded in Council's correspondence management system
- Details of works completed in each electric line clearance area are recorded
- No deviations have occurred from the cycles outlined in the plan
- No fires have been identified as having started as a result of foliage touching wires
- No vegetation damage has resulted from inadequate or substandard pruning practices. Random inspections of works will be undertaken to ensure they are adequate and up to standard
- No trees have been removed without expert advice being received
- Preparation of an Electric Line Clearance Plan prior to 31st March each year.
- Processes are reviewed in line with the review and preparation of the next year's Plan.

If inadequate processes are observed, the matter is reported and referred to the Parks and Open Space Coordinator or Manager Operations Centre.

All processes and each stage of work are recorded and monitored in line with the Nillumbik Tree Management Policy and Guidelines 2018, including:

- Annual street assessment and pruning requirements shall be recorded. The assessment shall be dated, outline the extent of works required and identify specific trees which require other further assessment
- Reports may be prepared on streets which require consideration of alternative electricity delivery infrastructure and shall be forwarded to the Operations Centre Lead
- Actions and decisions resulting from further assessment are to be recorded

- Work programs including dates, times and extent of work are to be recorded (as per section 6 Reporting of the Contract)
- Correspondence sent and received from Energy Safe Victoria shall be placed on file
- Correspondence related to clearance and vegetation management shall be placed on file
- All complaints or requests from distribution businesses, residents, staff, CFA etc are recorded, acted upon and responded to accordingly.

The Electric Line Clearance Management Plan, Codes and regulations are available for inspection upon request at Nillumbik's Operations Centre, 290 Yan Yean Rd Plenty from 8am–4pm on week days. It is requested that 48 hours' notice be given to arrange a suitable time for both parties.

(n) Details of the audit processes that must be used to determine the responsible person’s compliance with the Code

Protocol to respond to a ESV prohibition notice

Annual schedule for audit activities

Month	Activity	KPI	Responsible person
May	Contact contractor to ensure qualifications are up to date prior to the beginning to the electrical line clearing program.	Copy of Contractor qualifications received, reviewed and uploaded to Council’s record management system.	Senior Supervising Arborist / Urban Forest Planner
May	Organise suitably-qualified person with both nationally accredited “Assess Trees” module and nationally accredited “Identify Trees” module to conduct annual tree inspections within the declared area zones that are scheduled for that year within the two-year pruning cycle.	Suitably qualified person nominated	Senior Supervising Arborist
May - June	Inspections as described above are conducted.	Inspection records from contractor received, reviewed and uploaded to Councils record management system.	Active Tree Services / Urban Forest Planner
July	Electric line clearance pruning works program for the year	Pruning works program	Urban Forest Planner and

	prepared following the inspections.	prepared and uploaded by the Urban Forest Planner and Senior Supervising Arborist review and approval.	Senior Supervising Arborist
July - February	Electric line clearance pruning works program conducted.	Contractor monthly invoicing linked to works progress verified prior to approval.	Active Tree Services / Urban Forest Planner
July - February	Random inspections of contractor's on-site work practices during each zone, including work site management, staff qualifications, occupational health and safety, pruning standards and compliance with the Code (as per section 8 OH&S and 2.14 Audit and Inspection of the General Conditions of the Contract). Results to be scanned, reviewed and added to Council's records management system and communicated to the contractor in writing.	Results of random inspections scanned, reviewed and uploaded to Council's record management system with any findings communicated to the Contractor in writing.	Urban Forest Planner
July - February	A random audit of the works to assess quality of pruning and review of the program once programmed works are completed. Refer to Appendix 4 for an example of the electric line audit recording sheet.	Random audit of 10% of completed works undertaken and uploaded to Council's record management	Urban Forest Planner

	Results to be scanned, reviewed and added to Council's records management system and communicated to the contractor in writing.	system by the end of year. Audit frequency will be determined by Contractor completion dates.	
March	Review the pruning program's timeframes, costs and quality	Review completed and recorded in Council's records management system.	Senior Supervising Arborist
Ongoing	Issue non-conformance reports to Council regarding trees within the clearance space.		AusNet Services
Ongoing	Action non-conformance accordingly to ensure current best practice is adhered to and issue email confirmation of agreed outcomes and required actions. Results to be scanned, reviewed and added to Council's records management system.		Senior Supervising Arborist / Steven's Specialist Tree Services
Ongoing	The contractor will keep all records in accordance with the General Condition of the Contract.		Active Tree Services

(o) The qualifications and experience that the responsible person must require of the persons who are to carry out the inspection, cutting or removal of trees in accordance with the Code and the Electricity Safety (General) Regulations 2019:

All staff and contractors carrying out Arboricultural work on behalf of Council are required to be suitably qualified as per Nillumbik Tree Management Policy and Guidelines 2018 and the Contract.

In addition, all Council staff and contractors involved in inspection, cutting or removal of trees in accordance with the Regulations must be a 'Suitably Qualified Arborist' as defined by the Electricity Safety (General) Regulations 2019, r.616.

Suitably qualified arborists working on vegetation clearance near electric lines are required to have the appropriate skills, qualifications and certifications, including a current certificate specifying satisfactory completion of a training course in tree clearing, approved by Energy Safe Victoria.

This includes:

- UET20321 Certificate II in ESI – Powerline Vegetation Control (EWP Stream) (formally UET20319) with annual refresher training.

Suitably qualified arborists responsible for inspecting trees are required to have:

- Minimum Certificate National Certificate III in Arboriculture including the "Perform a ground-based tree defect evaluation" unit of competency, or an equivalent qualification
- Relevant industry experience
- Appropriate electrical asset identification skills
- Working Safely in the Construction Industry
- Working safely near live electrical apparatus; non-electrical worker
- Safe work practices
- First aid
- Traffic management
- Application of pruning techniques and standards
- Manual handling
- Environmental awareness
- Vegetation assessment.

Electric line clearance pruning is carried out on behalf of Council by contractors engaged under Nillumbik Contract No 2425-070 *Tree Pruning and other Associated Services*. Refer to *Section 12 Relevant Standards, guidelines and legislation* of the contract specifications.

The contractor is responsible for scheduling training for their staff. Evidence is provided to Council on request.

The Urban Forest Planner is responsible for ensuring that all staff members on site have the required induction, qualifications and experience. The contractor is responsible for ensuring that their staff have the required induction, qualifications and experience as part of the contract. As part of the contractor's induction, they are required to peruse and sign the OH&S Induction Book. Procedures and responsibilities for ensuring refresher training, sufficient training, induction, staff/contractor performance review and competency measures are included in the audit activities detailed in section (o).

Evidence that contractor personnel have had the required training must be carried by the staff at all times and must be shown to the Council officer on request, in accordance with the Contract clause 4.3 Electric Line Clearance. If on-site audits identify personnel without the required accreditation or training, Councils Urban Forest Planner or Senior Supervising Arborist will notify the site supervisor to immediately rectify the situation, including removal of the personnel from the site if required. This will be followed up in accordance with Clause 6.1 of the Contract 'Default by the Contractor - Show Cause Notice'.

Records of training are filed and available for inspection upon request at the Nillumbik Operations Centre, 290 Yan Yean Rd Plenty from 8am to 4.30pm on week days (not including public holidays). It is requested that 48 hours' notice be given.

The contractor is responsible for keeping electronic qualification records and making them available to Council on request.

(p) Notification and consultation procedures, including the form of the notice to be given in accordance with Division 3 of Part 2 of the Code

Council's Senior Supervising Arborist will advise residents of intentions for electric line vegetation clearance works at least 14 days and not more than 60 days prior to work crews commencing works. The Senior Supervising Arborist and member of the Communications team responsible for advertising are required to place a notification on Council's website (www.nillumbik.vic.gov.au). The notification will include a description and/or map of the affected area, description of tree works being undertaken and proposed commencement and completion dates of works. An example of the public notice on the website is as follows:

Tree pruning works around overhead powerlines

On display until 31 January 2027, 12:00 AM

Nillumbik Shire Council contractors will undertake pruning works and possible tree removal around overhead powerlines.

The works will be undertaken in the streets of Diamond Creek, Eltham, Eltham North, Greensborough, Plenty, with a small number of streets in Wattle Glen and Research between July and December 2026.

The works are part of the regular legislative maintenance to ensure compliance with the Electrical Safety (Electrical Line Clearance) (Interim) Regulations 2025.

Council is responsible for maintaining a minimum clearance space around the powerlines to avoid the chance of trees contacting powerlines, which could lead to power outages and in some cases, fires.

Please contact our Customer Service team on 9433 3111 if you have any concerns.

Tagged as:

Policy, plan or strategy

Contact details

Open Space Maintenance and
Projects team
9433 3111
nillumbik@nillumbik.vic.gov.au

Depending on the works and likely disruption to residents, at least 14 days and not more than 60 days prior to works commencing, the Senior Supervising Arborist may advise via direct mail the individual residents who may be affected in the area of any works to a significant tree.

Council's schedule of works in section (j)(i) will be used to ensure notification is posted on Council's website.

If clearing is not going to occur in the 14–60-day notification window, we will update the information on Council's website.

Dispute resolution procedures

Between Council and residents/customers

Any dispute relating to electric line clearance will be dealt with in line with Council's Complaint Handling Policy 2021, available on Council's website:

<https://www.nillumbik.vic.gov.au/Contact-us/Complaints>. It is also available for inspection between 8am and 4pm Monday to Friday at the Nillumbik Civic Centre, Civic Drive, Greensborough.

In the first instance, disputes will be referred to the Urban Forest Planner for resolution, with escalation as follows if required:

- Senior Supervising Arborist
- Parks and Open Space Coordinator
- Operations Centre Manager
- Chief Operating Officer
- CEO

Between Council and the contractor

In the event of any dispute or difference arising between Council and the Contractor, Council's Urban Forest Planner or Senior Supervising Arborist will notify and meet with the contractor to discuss ways of resolving the dispute or difference, as per Clause S12 'Dispute Resolution' of the Contract. If a resolution cannot be met, it will be escalated within Council and / or referred to mediation.

Between Council and the distribution business

In the event of any dispute or difference arising between Council and AusNet Services, Council's Urban Forest Planner or Senior Supervising Arborist will notify and meet with the relevant representative or AusNet Services to discuss ways of resolving the dispute or difference. If a resolution cannot be met, it will be escalated within Council and / or referred to mediation.

(q) If Energy Safe Victoria has granted an exemption under regulation 11 relating to a requirement of the Code, details of the exemption or a copy of the exemption.

If an exemption has been granted by Energy Safe Victoria, documentation of Council's request and the exemption will be stored on Council's electronic management system.

Regulation 10, subregulation 7

The current version of the Electric Line Clearance Management Plan (this Plan) is available for viewing on Council's website and Civic Centre, in accordance with Regulation 10 (Obligations relating to management plan), subregulation 6 of the Electricity Safety (Electric Line Clearance) Interim Regulations 2025.

The Plan is available on Council's website under the 'Trees section:

<https://www.nillumbik.vic.gov.au/Explore/Environment/Natural-environment/Plants-and-trees/Trees>

This website will be updated to replace the superseded Plan with the current Plan by the Environment web author at the request of the Manager Operations Centre within two days of the CEO's authorisation of the Plan. The ELCMP will be published on the Council website prior to 1 July each year.

A hard copy of the Plan is available to view at Nillumbik Shire Council's Civic Centre, Civic Drive Greensborough, between 9am–5pm Monday to Friday (not including public holidays). It is requested that 48 hours' notice be given.

Schedule 1 Part 2 Division 1

Regulation 4 – Exception to minimum clearance space for structural branches around insulated low voltage electric lines

Council does not intend to apply an exception.

Regulation 5 – Exception to minimum clearance space for small branches around insulated low voltage electric lines

Council does not intend to apply an exception.

Regulation 6 – Exception to minimum clearance space for small branches around uninsulated low voltage electric lines in low bushfire risk areas

Council does not intend to apply an exception.

Regulation 7 – Exception to minimum clearance space for structural branches around uninsulated low voltage electric lines in low bushfire risk areas

Council does not intend to apply an exception.

Regulation 8 – Responsible person may cut or remove hazard trees

The hazard tree inspection and pruning/removal process is clearly outlined in the Nillumbik Tree Management Guidelines 2018. The Guidelines define a hazard tree as follows:

- For Nillumbik Shire Council, a tree or part of a tree is deemed to be hazardous following an assessment by a suitably qualified arborist. The assessment will consider whether the tree has structural defects and/or poor health that may pose a risk of personal injury or property damage that exceeds an acceptable level. In

determining the level of risk, the assessment will consider the likelihood of the tree or part of the tree failing within 12 months given normal weather conditions and the likelihood of a target being present in the area of potential impact.

For the purposes of this Plan the target would be an electric line.

If a member of the public, Council staff, CFA or distribution business identifies and reports a hazard tree, a qualified arborist will conduct an assessment of the tree, and if that assessment confirms the likelihood of contact with an electric line having regard to foreseeable local conditions, the tree may be cut or removed by the responsible person. Council staff record the report in Council's customer service management system (Pathway), including details such as: location of tree; name and contact details of reporter; why the tree is a hazard, and if it's deemed urgent.

If Council is not responsible, details of the report are forwarded to AusNet Services or other responsible parties as soon as practicable. If it is Council's responsibility, works on a hazard tree will be actioned depending on the urgency or risk priority identified during the assessment.

Records of emergency or urgent works will be kept for five years and include details of where and when the works were undertaken, why the works were required and the last inspection of the section of line where the cutting or removal was required.

Council's internal process is as per Section 2.1 of the Tree Management Policy and Guidelines 2018 – See Appendix 5 for the reactive request management process.

Council will keep a record of trees removed under the emergency work provisions to ensure replanting occurs where appropriate.

Section 1.5 of the Nillumbik Tree Management Guidelines 2018 outlines Council's documentation system for tree-related service requests and processes.

Schedule 1 Part 2 Division 2

Regulation 10 – Cutting or removal of: native trees; trees listed in a planning scheme to be of ecological, historical or aesthetic significance; trees of cultural or environmental significance must be minimised

Removal of native trees – indigenous or significant tree to be removed

Regulation 11 – Cutting or removing habitat for threatened fauna

Before any clearing of a tree is undertaken, Council officers or contractors must consult the Threatened Flora List and the Threatened Vertebrate and Invertebrate

Fauna Lists as maintained by the Department of Energy, Environment and Climate Action (DEECA), pursuant to the *Flora and Fauna Guarantee Act 1988*.

If a tree is identified as habitat for a species on these lists, cutting or removal will only occur:

1. To the extent necessary to maintain the clearance space; or
2. Where a Suitably Qualified Arborist identifies an immediate safety risk.

Code cl 12 Council will avoid cutting or removing habitat trees during the breeding season of threatened fauna unless necessary to make an unsafe situation safe or it is not practicable to undertake works outside the breeding season; if not practicable, fauna will be translocated before works where practicable.

The following provides a response to both Regulation 10 and Regulation 11, read in conjunction with section (g) of this plan.

Tree pruning is undertaken to comply with minimum clearance distances. The trees identified in section (g) have been assessed to determine pruning cycles to minimise cutting. These trees are pruned annually to minimise impact. If removal is recommended, a suitably qualified arborist will inspect, as per section (j)(i) of the Plan, to verify that removal is required.

If the need arises for alternative mechanisms, approval will be sought from Energy Safe Victoria in accordance with clause 31 of the Regulations.

Contractors may also contact Council if there are any site indicators that a tree may have significance if they haven't already been alerted to it by Council (list in section g above). Before any works are undertaken on old mature indigenous plants, trees are inspected. In the event a significant tree is identified, no pruning shall occur without further consultation with Council.

Trees are identified by a qualified arborist with knowledge of indigenous, native and exotic trees. Council staff also refer to maps detailed in section (h) and the relevant planning overlays and GIS to ensure that minimal impact is made in areas of cultural, historical, botanical, ecological or habitat significance for rare or endangered species.

If a habitat tree is identified within the vicinity of electric lines, it will be managed in line with the Nillumbik Tree Management Policy and Guidelines 2018, which may include engagement of a fauna specialist, conducting pruning activities outside of the breeding season wherever practical or by relocating the fauna.

Habitat management and minimisation of disturbance

Schedule 1 Part 2 Division 4 Regulation 20 – Duty relating to the safety of cutting or removal of trees close to an electric line

Where Council has responsibility for cutting and removal of trees close to electric lines then the following process applies:

- During inspection of the zone to be cleared, a list of sites is collated where vegetation removal near electric lines (live line) is required.
- For advice regarding concerns about the safety of cutting or removing a tree near an electric line identified during the inspection, Council's arborist contacts the distribution business contact. The distribution business contact is Will Kerry Stakeholder & Performance Manager at will.kerry@ausnetservices.com.au.
- A contractor with appropriately qualified staff is engaged for assessment, quotes and works which include suppression or shutdown as required.

The contractor used by Nillumbik Council for this purpose is engaged under Nillumbik Contract No 2425-070 and is TreeServe Pty Ltd.

- **The contact person is Josh Gregory, Operations Manager - Vic Contracts, with contact details as follows, josh.gregory@treeserve.com.au or 0499 976 480.**

Alternatively, you can contact

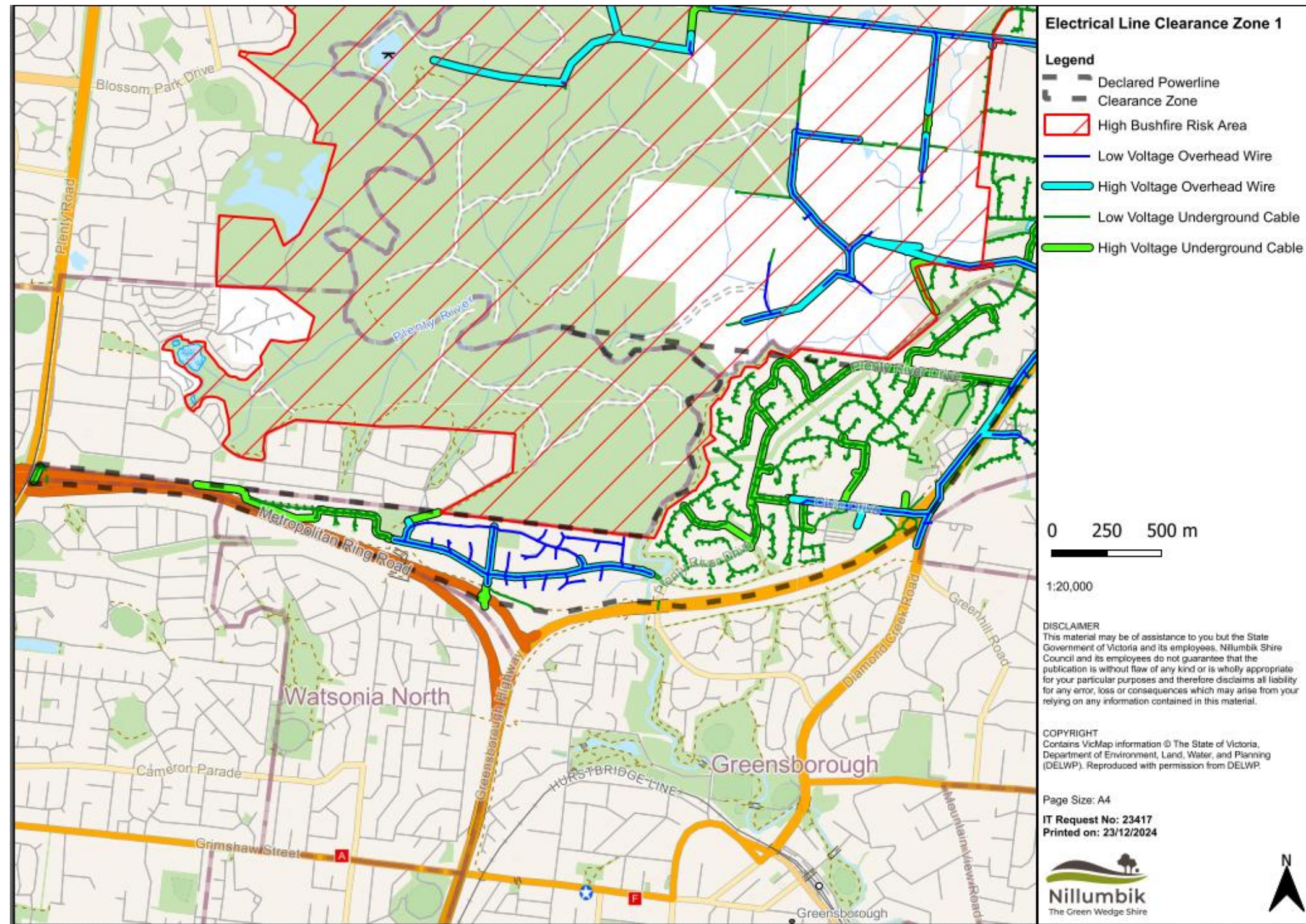
- **Sean Howe, Reactive Tree Work Client Manager, with contact details as follows, 0448012249 sean.howe@treeserve.com.au or**
- **David Beattie, Head of Operations Victoria, with contact details as follows 0418411886 – david.beattie@treeserve.com.au**

TreeServe can liaise with the distribution business (AusNet Services) on Council's behalf for suppression or shutdown.

Appendix 1 Detailed locality maps 1-8 for high voltage (HV) electric lines, low voltage (LV) electric lines and hazardous bushfire risk areas (HBRA).

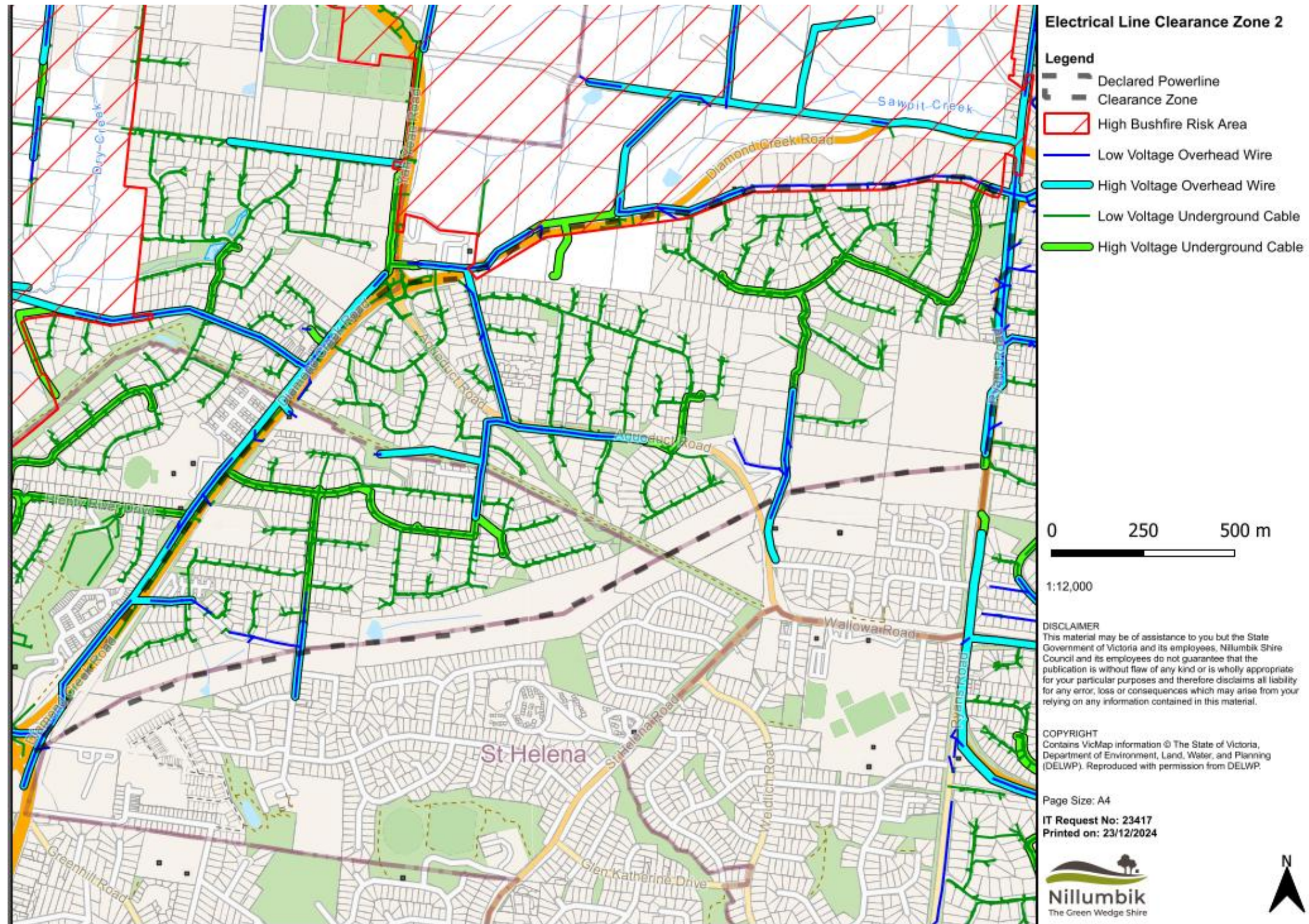
Map 1

Detailed locality map for high voltage (HV) electric lines, low voltage (LV) electric lines and hazardous bushfire risk areas (HBRA) in the Nillumbik Declared Area



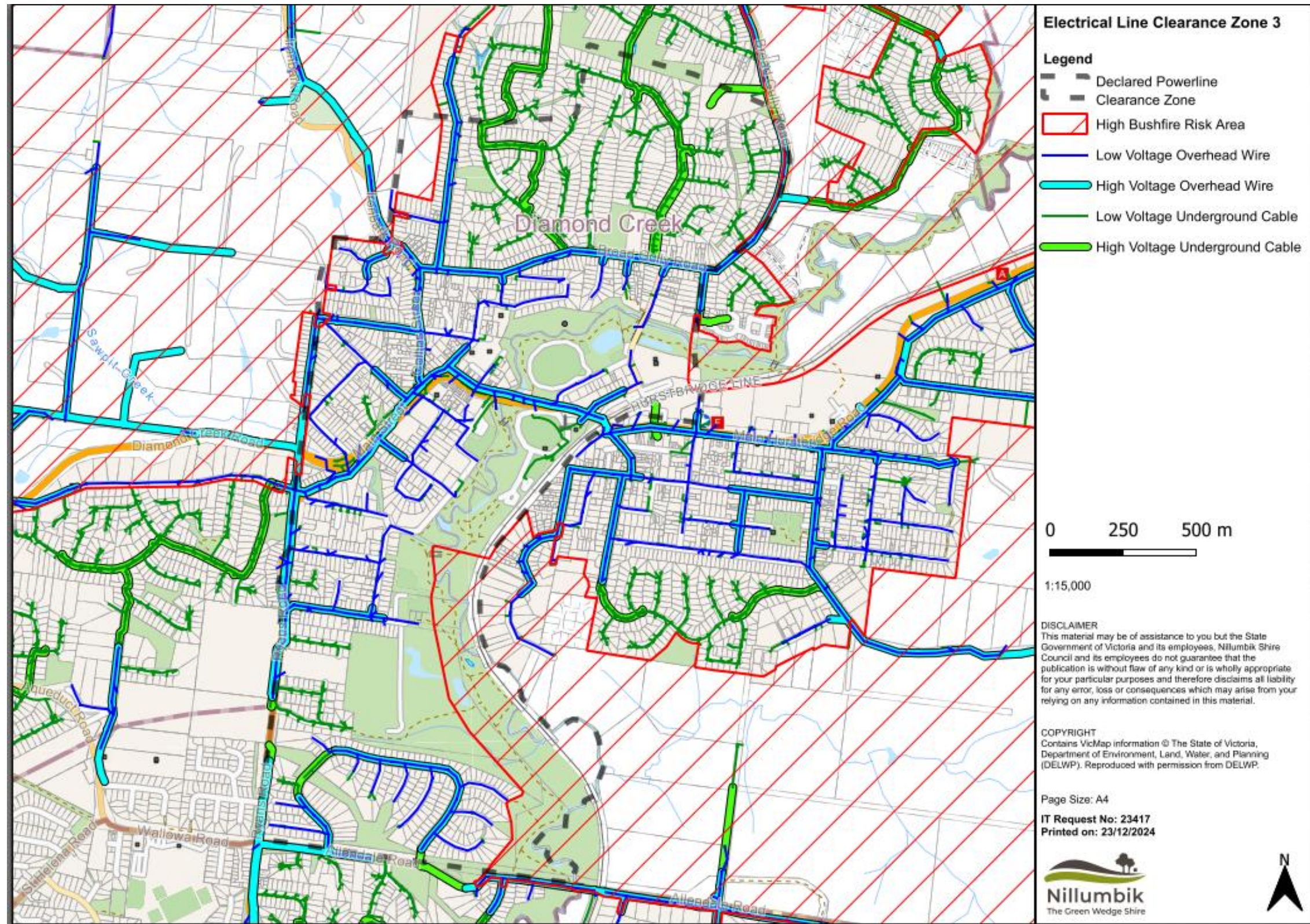
Map 2

Detailed locality map for high voltage (HV) electric lines, low voltage (LV) electric lines and hazardous bushfire risk areas (HBRA) in the Nillumbik Declared Area



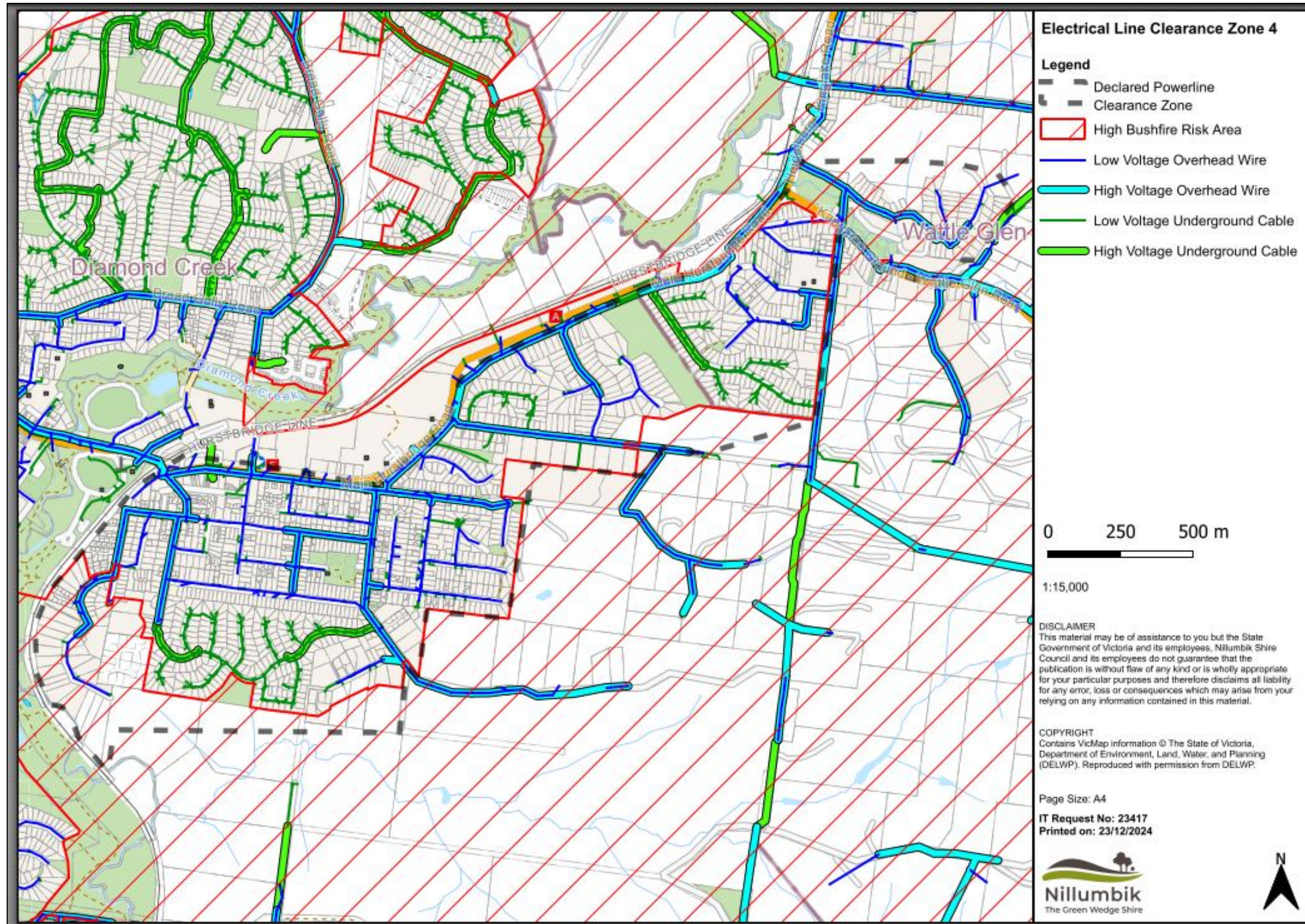
Map 3

Detailed locality map for high voltage (HV) electric lines, low voltage (LV) electric lines and hazardous bushfire risk areas (HBRA) in the Nillumbik Declared Area



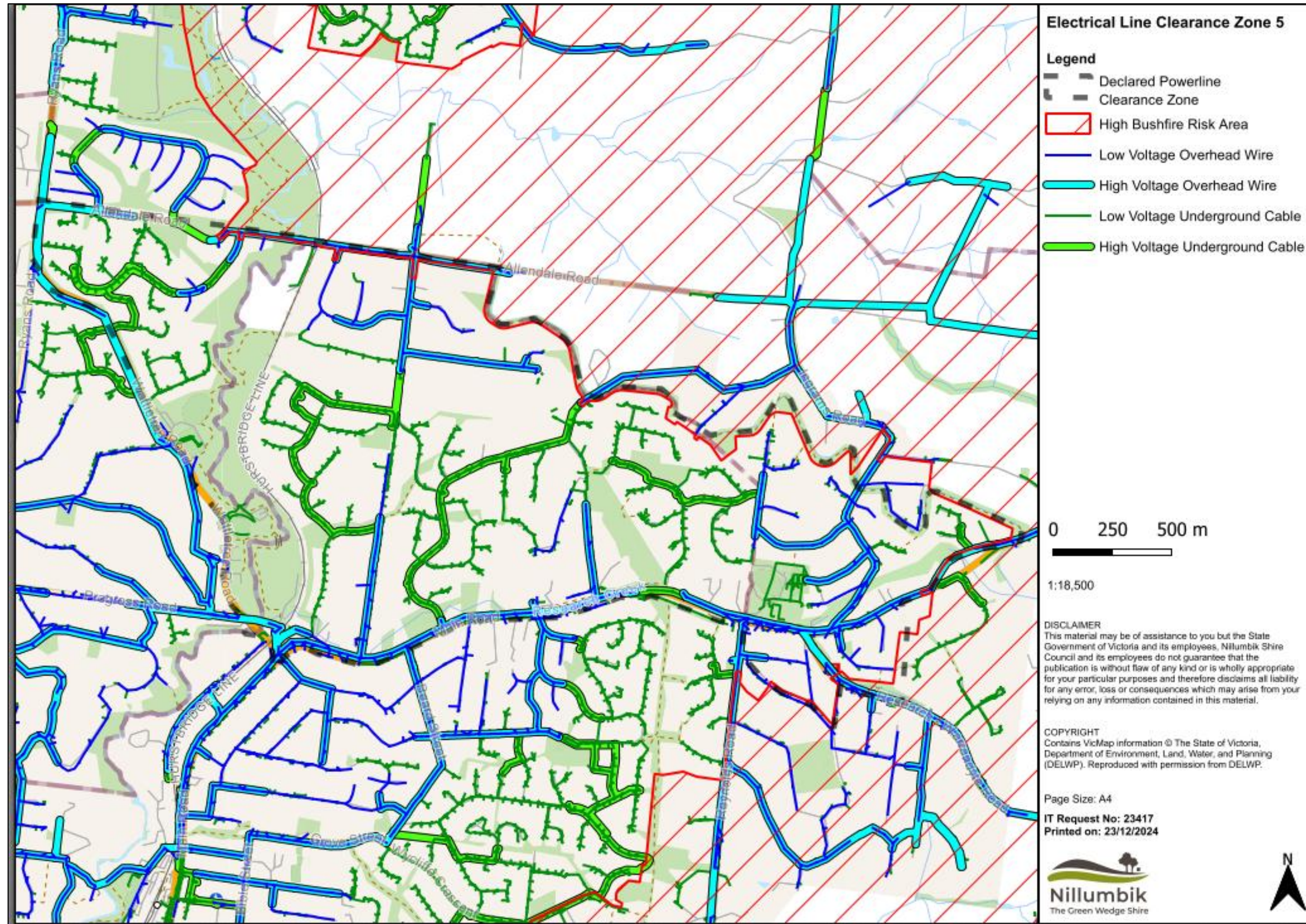
Map 4

Detailed locality map for high voltage (HV) electric lines, low voltage (LV) electric lines and hazardous bushfire risk areas (HBRA) in the Nillumbik Declared Area



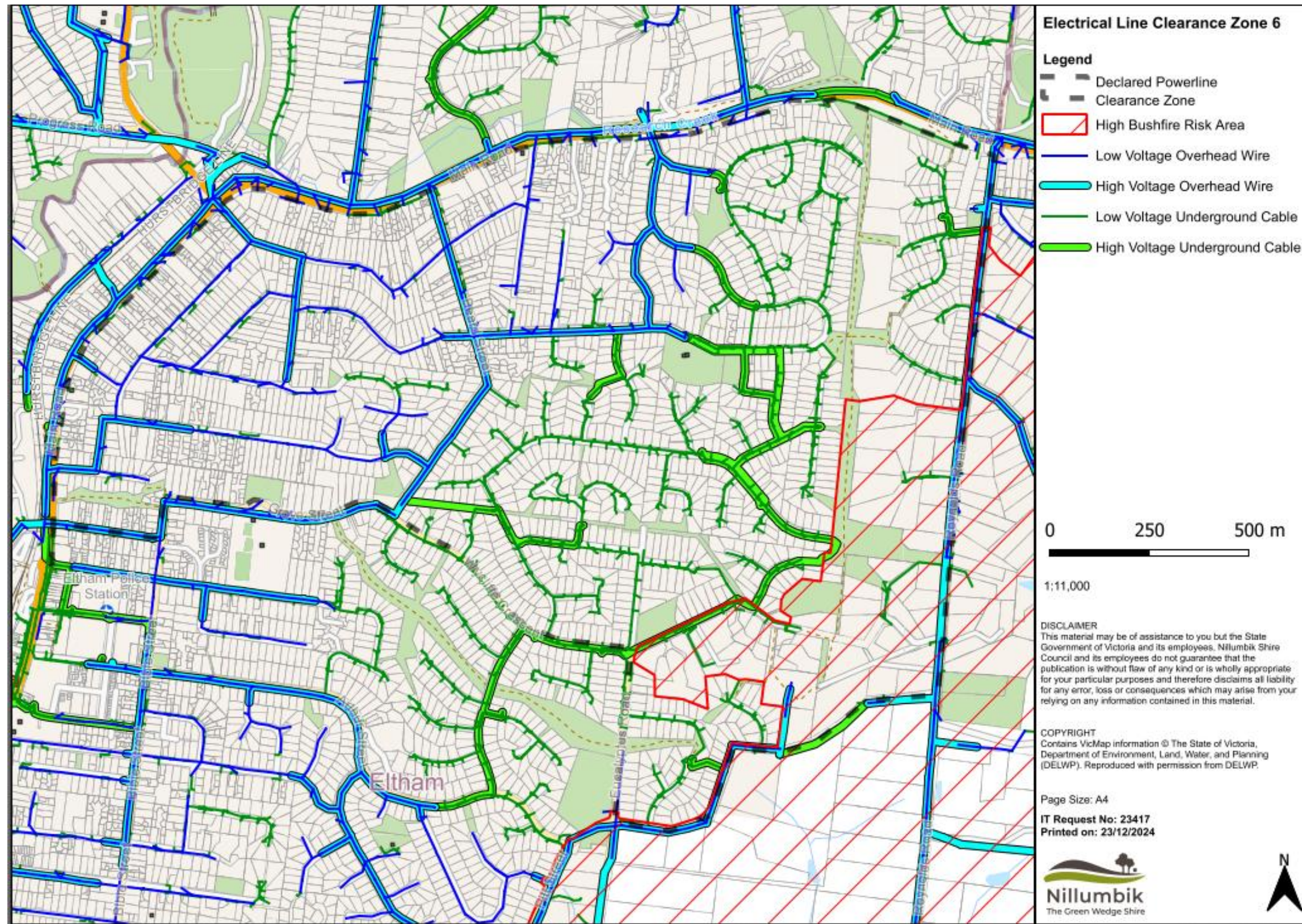
Map 5

Detailed locality map for high voltage (HV) electric lines, low voltage (LV) electric lines and hazardous bushfire risk areas (HBRA) in the Nillumbik Declared Area



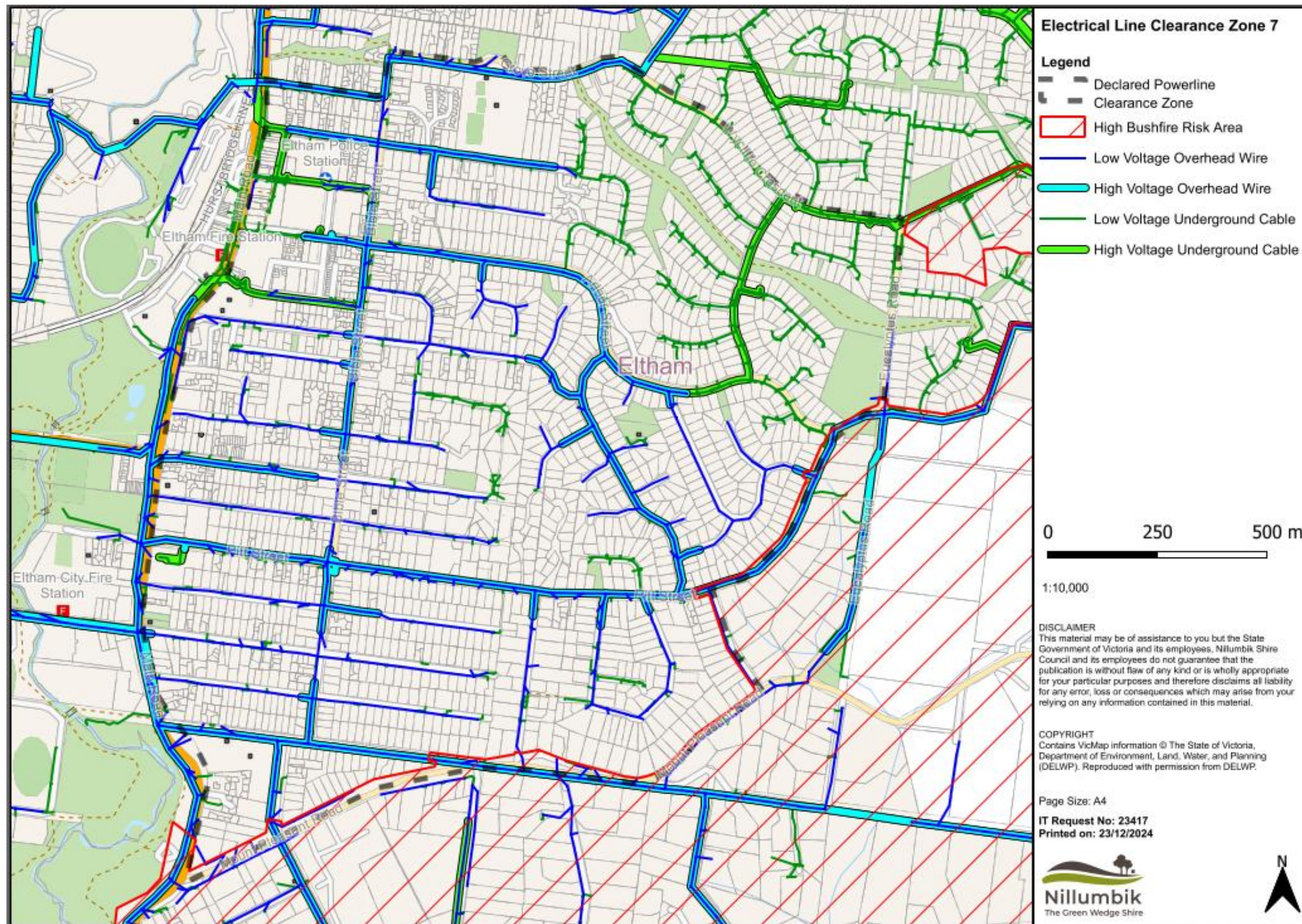
Map 6

Detailed locality map for high voltage (HV) electric lines, low voltage (LV) electric lines and hazardous bushfire risk areas (HBRA) in the Nillumbik Declared Area



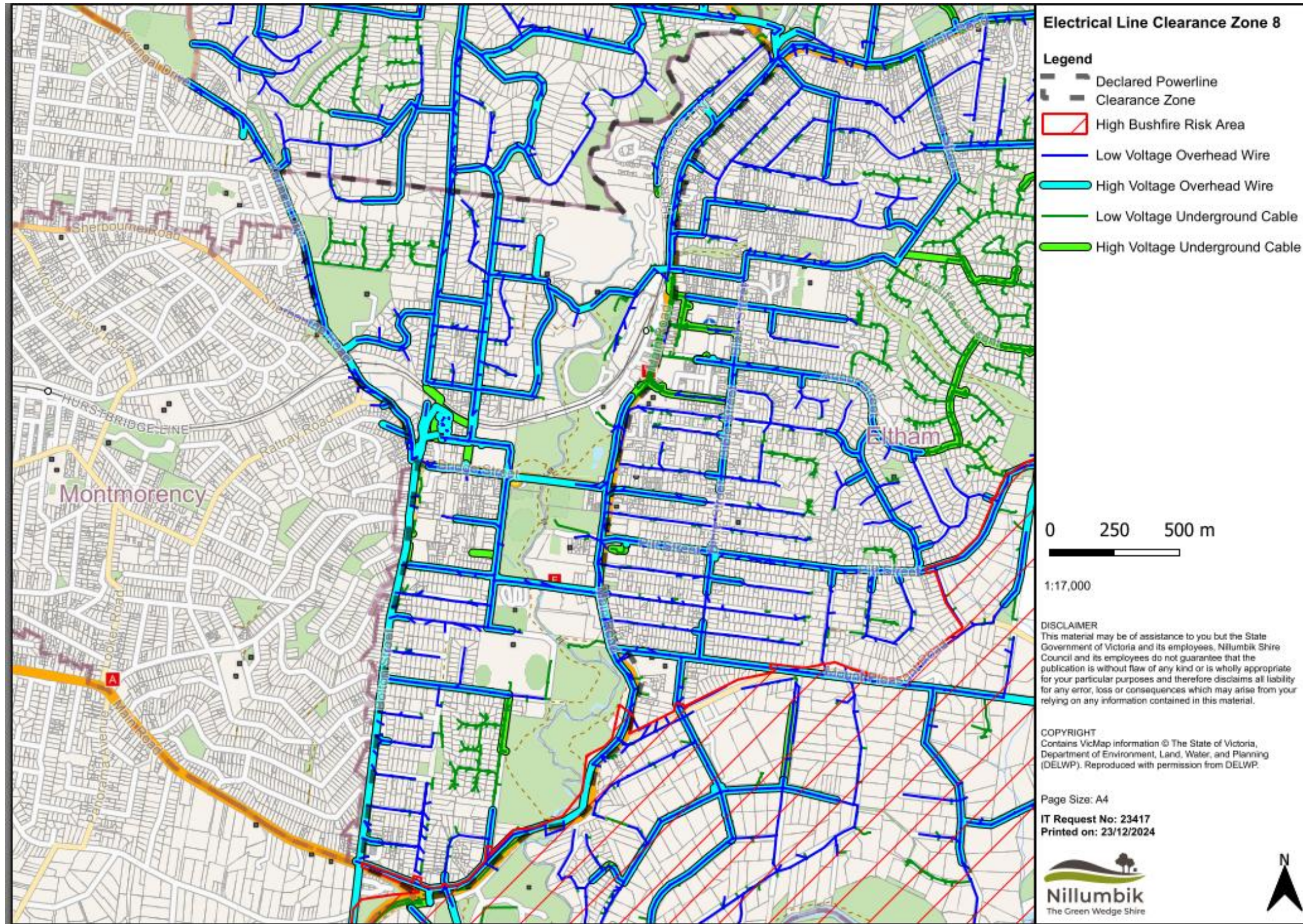
Map 7

Detailed locality map for high voltage (HV) electric lines, low voltage (LV) electric lines and hazardous bushfire risk areas (HBRA) in the Nillumbik Declared Area



Map 8

Detailed locality map for high voltage (HV) electric lines, low voltage (LV) electric lines and hazardous bushfire risk areas (HBRA) in the Nillumbik Declared Area



Appendix 2 List of streets in the Nillumbik declared area with overhead electric lines

Zone	Suburb	Street	Distance (kilometres)
1	Greensborough	Booyan Crescent	0.83
1	Greensborough	Brinawa Drive	0.47
1	Greensborough	Civic Drive	0.7
1	Greensborough	Collendina Crescent	0.45
1	Greensborough	Diamond Hills Drive	0.43
1	Greensborough	Dwyer Place	0.08
1	Greensborough	Eastgate Drive	0.47
1	Greensborough	Evrah Place	0.05
1	Greensborough	Goolgung Crescent	0.3
1	Greensborough	Jarra Court	0.1
1	Greensborough	Kariboo Crescent	0.13
1	Greensborough	Kerta Close	0.07
1	Greensborough	Kinka Place	0.04
1	Greensborough	Myoora Court	0.03
1	Greensborough	Nioka Court	0.05
1	Greensborough	Nokuna Court	0.13
1	Greensborough	Nym Court	0.05
1	Greensborough	Senbin Court	0.07
1	Greensborough	Tirray Close	0.05
1	Greensborough	Vabiro Court	0.1
1	Greensborough	Wanbanna Avenue	0.32
1	Greensborough	Wanda Court	0.05
1	Greensborough	Yonde Court	0.06
2	Diamond Creek	Aqueduct Lane	0.59
2	Diamond Creek	Aqueduct Road	1.18
2	Diamond Creek	Citriodora Court	0.18
2	Greensborough	Cooee Court	0.1
2	Diamond Creek	Diamond Creek Rd	3.92

Version: 12.0

Revision date: March 2026

Warning: Uncontrolled when printed

Zone	Suburb	Street	Distance (kilometres)
2	Greensborough	Diamond Creek Rd	1.41
2	Diamond Creek	Marino Way	0.24
2	Diamond Creek	Old Aqueduct Road	0.38
2	Diamond Creek	Old Diamond Creek Road	0.94
2	Greensborough	Oldstead Road	0.31
2	Greensborough	St Georges Court	0.26
2	Diamond Creek	Wilson Road	1.9
3	Diamond Creek	Amaroo Court	0.11
3	Diamond Creek	Bage Street	0.21
3	Diamond Creek	Broad Gully Road	6.6
3	Diamond Creek	Campbell Street	0.3
3	Diamond Creek	Canton Court	0.18
3	Eltham Nth	Cathay Court	0.1
3	Diamond Creek	Challenger Street	0.4
3	Eltham Nth	Chitral Place	0.1
3	Eltham Nth	Chusan Court	0.2
3	Diamond Creek	Chute Street	0.16
3	Diamond Creek	Clyde Street	0.58
3	Diamond Creek	Collins Street	0.39
3	Diamond Creek	Cowen St	0.42
3	Diamond Creek	Dartagook Street	0.2
3	Diamond Creek	Diamond Street	0.78
3	Diamond Creek	Edinburgh Street	0.34
3	Diamond Creek	Edmonds Street	0.43
3	Diamond Creek	Elgata Court	0.1
3	Diamond Creek	Elizabeth Street	0.3
3	Diamond Creek	Fairview Crescent	0.28
3	Diamond Creek	Fuller Street	0.27
3	Diamond Creek	Galatea Street	0.22
3	Diamond Creek	Gipson Street	0.46
3	Diamond Creek	Grassy Flat Road	1

Zone	Suburb	Street	Distance (kilometres)
3	Diamond Creek	Happy Valley Rise	0.11
3	Diamond Creek	Helen Court	0.16
3	Eltham Nth	Himalaya Court	0.07
3	Diamond Creek	Hyde Street	0.24
3	Diamond Creek	Inglis Street	0.13
3	Diamond Creek	Ironbark Road	0.15
3	Diamond Creek	Koonawarra Way	0.37
3	Diamond Creek	Lambert Street	0.54
3	Diamond Creek	Main Street	4.02
3	Diamond Creek	Moray Street	0.3
3	Diamond Creek	Murray Road	0.92
3	Eltham Nth	Nankin Close	0.08
3	Eltham Nth	Orcades Place	0.1
3	Eltham Nth	Ormonde Court	0.2
3	Diamond Creek	Oronsay Crescent	1.2
3	Diamond Creek	Parook Court	0.14
3	Eltham Nth	Pinjarra Court	0.1
3	Diamond Creek	Price Court	0.1
3	Diamond Creek	Rangeview Road	0.27
3	Diamond Creek	Risdale Court	0.1
3	Diamond Creek	Ryan Street	0.2
3	Diamond Creek	Ryans Road	4.54
3	Eltham Nth	Somali Close	0.15
3	Diamond Creek	Station Street`	0.2
3	Diamond Creek	Stone Street	0.18
3	Eltham Nth	Strathaird Close	0.2
3	Diamond Creek	Valley Court	0.1
3	Diamond Creek	Watkins Street	0.55
4	Diamond Creek	Anne Street	0.29
4	Diamond Creek	Bishop Avenue	1.53
4	Diamond Creek	Brooks Crescent	0.18

Zone	Suburb	Street	Distance (kilometres)
4	Diamond Creek	Bruce Street	0.3
4	Diamond Creek	Bruford Street	0.11
4	Diamond Creek	Chapman Street	0.46
4	Diamond Creek	Coniston Street	0.33
4	Diamond Creek	Dering Street	0.45
4	Wattle Glen	Edward Street	0.1
4	Diamond Creek	Egan Street	0.2
4	Diamond Creek	Everard Street	0.16
4	Diamond Creek	Fyffe Street	0.52
4	Diamond Creek	George Street	0.9
4	Diamond Creek	Gregg Street	0.4
4	Diamond Creek	Haley Street	0.8
4	Diamond Creek	Harrington Street	0.03
4	Diamond Creek	Ilana View Drive	0.46
4	Diamond Creek	James Cook Drive	0.89
4	Diamond Creek	Kelly Street	0.25
4	Diamond Creek	Lovitt Close	0.11
4	Diamond Creek	Nillumbik Square	0.35
4	Diamond Creek	Norma Street	0.25
4	Diamond Creek	Patyah Street	0.69
4	Diamond Creek	Perversi Avenue	1.27
4	Diamond Creek	Phipps Crescent	2
4	Diamond Creek	Reynolds Road	1.1
4	Wattle Glen	Reynolds Road	2
4	Diamond Creek	Royston Street	0.09
4	Wattle Glen	Sunnyside Crescent	0.85
4	Diamond Creek	The Parkway	0.38
4	Diamond Creek	The Rise	0.1
4	Diamond Creek	Victoria Street	0.25
4	Diamond Creek	Waigo Way	0.3
4	Diamond Creek	Ward Street	0.1

Zone	Suburb	Street	Distance (kilometres)
4	Wattle Glen	Warrington Crescent	0.5
4	Diamond Creek	Wensley Street	0.4
5	Diamond Creek	Allendale Road	5.2
5	Research	Beddoe Road	0.19
5	Research	Caltowie Court	0.15
5	Research	Cudgee Court	0.13
5	Eltham	Dobell Drive	0.7
5	Eltham Nth	Drysdale Road	0.13
5	Eltham Nth	Grevillea Close	0.15
5	Research	Henzell Road	0.1
5	Research	Howell Court	0.13
5	Eltham	Huntingfield Court	0.3
5	Research	Ingrams Road	1.77
5	Research	Kanandah Court	0.17
5	Eltham Nth	Landscape Court	0.2
5	Eltham	Leane Drive	1.3
5	Research	Main Road	7.35
5	Eltham Nth	Marian Court	0.1
5	Research	Maroong Drive	0.8
5	Research	Nicholson Court	0.4
5	Eltham Nth	Orion Court	0.05
5	Eltham	Parsons Road	0.86
5	Research	Pickwood Rise	0.17
5	Research	Piper Crescent	0.4
5	Research	Raglan Court	0.06
5	Research	Raglan Road	0.34
5	Research	Research/Warrandyte Rd	3.11
5	Research	Storey Avenue	0.3
5	Research	Talwong Court	0.14
5	Research	Thompson Crescent	1.7
5	Research	Valley Road	1.9

Zone	Suburb	Street	Distance (kilometres)
5	Eltham Nth	Wattletree road	2.5
5	Eltham Nth	Wombat Court	0.1
5	Eltham	Wombat Drive	0.13
5	Eltham	Zig Zag Road	0.68
5	Eltham Nth	Zig Zag Road	1.09
6	Eltham	Abersham Court	0.09
6	Eltham	Andrews Street	0.47
6	Eltham	Batman Road	0.5
6	Eltham	Bayfield Drive	0.24
6	Eltham	Beard Street	0.9
6	Eltham	Bellevue Road	0.14
6	Eltham	Bryan Court	0.2
6	Eltham	Elouera Close	0.1
6	Eltham	Elsa Court	0.24
6	Eltham	Eucalyptus Road	1.36
6	Eltham	Floriston Grove	0.57
6	Eltham	Foster Road	0.3
6	Eltham	Frank Street	1.1
6	Eltham	Gladwyn Court	0.6
6	Eltham	Harman Avenue	0.1
6	Eltham	Heddon Court	0.1
6	Eltham	Helene Street	0.34
6	Eltham	Livingston Road	0.8
6	Eltham	Nyora Road	0.9
6	Eltham	Park Road	0.5
6	Eltham	Park West Road	0.37
6	Eltham	Penrith Court	0.1
6	Eltham	Renshaw Drive	0.3
6	Research	Reynolds Road	2.97
6	Eltham	Shalbury Avenue	0.5
6	Eltham	Sheffield Street	0.3

Zone	Suburb	Street	Distance (kilometres)
6	Eltham	Stanley Avenue	0.5
6	Eltham	Thomas Street	0.23
6	Eltham	Treetops Close	0.5
6	Research	Viewmount Court	0.26
6	Eltham	Woodland Way	0.19
7	Eltham	Adenmore Court	0.09
7	Eltham	Arcola Court	0.12
7	Eltham	Arthur Street	1.6
7	Eltham	Avarn Court	0.1
7	Eltham	Bible Street	1.6
7	Eltham	Brownes Crescent	1.32
7	Eltham	Cecil Street	0.27
7	Eltham	Dalton Street	0.7
7	Eltham	Davies Drive	0.3
7	Eltham	Dudley street	0.3
7	Eltham	Franklin Street	0.8
7	Eltham	Glenister Drive	0.67
7	Eltham	Gloucester Court	0.04
7	Eltham	Grey Street	0.21
7	Eltham	Grove Street	0.6
7	Eltham	Harlington Ave	0.2
7	Eltham	Henry Street	0.9
7	Eltham	John Street	0.8
7	Eltham	Kent Court	0.03
7	Eltham	Lamorna Court	0.14
7	Eltham	Lillian Parade	0.38
7	Eltham	Luck Street	0.7
7	Eltham	Macaulay Court	0.1
7	Eltham	Malabar Crescent	0.6
7	Eltham	Mt Pleasant Road	5.92
7	Eltham	Napoleon Street	0.8

Zone	Suburb	Street	Distance (kilometres)
7	Eltham	Novello Court	0.1
7	Eltham	Pitt Street	2.1
7	Eltham	Pryor Street	0.3
7	Eltham	Rockliffe Street	0.4
7	Eltham	Roxby Close	0.07
7	Eltham	Ruskin Court	0.15
7	Eltham	Sion Close	0.05
7	Eltham	Talma Close	0.06
7	Eltham	Taylor Street	0.34
7	Eltham	Treloar Avenue	0.15
7	Eltham	View Hill Crescent	0.65
7	Eltham	Wattle Grove	0.24
7	Eltham	York Street	0.64
8	Eltham	Baxter Street	0.2
8	Eltham	Bell Street	0.2
8	Eltham	Bolton Street	2.05
8	Eltham	Bridge Street	1.45
8	Eltham	Brisbane Street	1.3
8	Eltham	Brougham Street	1.6
8	Eltham	Cromwell Street	0.35
8	Eltham	Cronus Court	0.15
8	Eltham	Cygnets Court	0.1
8	Eltham	Darly Place	0.05
8	Eltham	Diamond Street	0.8
8	Eltham	Ely Street	0.64
8	Eltham	Falkiner Street	0.66
8	Eltham	Fay Street	0.2
8	Eltham	Flint Street	0.2
8	Eltham	Godalmin Street	0.2
8	Eltham	Inez Avenue	0.12
8	Eltham	Karingal Drive	0.64

Zone	Suburb	Street	Distance (kilometres)
8	Eltham	Kerby Street	0.2
8	Eltham	Kerrie Crescent	0.35
8	Eltham	Main Road	10.3
8	Eltham	Meruka Drive	0.54
8	Eltham	Nioka Court	0.04
8	Eltham	Peel Street	0.2
8	Eltham	Peter Street	0.4
8	Eltham	Porter Street	1
8	Eltham	Punari Mews	0.03
8	Eltham	Ryans Road	0.73
8	Eltham	Sandra Avenue	0.2
8	Eltham	Sherbourne Road	0.45
8	Eltham	Silver Street	1.17
8	Eltham	Souter Street	0.3
8	Eltham	Stanhope Street	0.45
8	Eltham	Susan Street	0.6
8	Eltham	Swan Street	0.4
8	Eltham	Tanya Way	0.08
8	Eltham	Thornton Street	0.2
8	Eltham	Vine Street	0.07
8	Eltham	Walsh Street	0.21
8	Eltham	Warringah Crescent	0.8
8	Eltham	Withers Way	0.64
			167.87

Appendix 3 Detailed locations of hazardous bushfire risk areas within the Nillumbik Declared Area

Melways map ref	Street number	Street name	Suburb
11 K10/ 12 A10/ B10/ C10	From Orsova close to 168 (Research Aqueduct)	Allendale Road	Diamond Creek/ Eltham
12 A7/ A8	Whole street	Dering Street	Diamond Creek
12 A6/ A7	22, 24, side 27, 29, 31, 32, 34, 36, 38, 41, 43	Fyffe Street	Diamond Creek
12 C4	1, 38	Landex Court	Diamond Creek
11 K4/ K3	47, 48, 49, 52, 55, 56	Grassy Flat Road	Diamond Creek
11 K4/ J4	14a, 14b, 11, 12, 15, 17- 21	Ironbark Road	Diamond Creek
11 J5	3, 2	Koonawarra Way	Diamond Creek
12 C3/ C4	138, 142, 145, 147, 149, 151, 153, 155, 157, 159, 161, 163, 165, 167, 169, 171, 173, 193, 195, 197, 199	Broad Gully Road	Diamond Creek
11 J6/J5	134, 125-139 83, 85, 87, opp 87, 89, opp 89, 7, 5, 3, 1	Lambert Street	Diamond Creek
11 K4	1, 4, 6, 8	Murray Road	Diamond Creek
12 B4/ B5	5, 7, 8, 9, 10, 11, 12, 14, 15, 16, 17, 18, 19, 20, 21	Rangeview Road	Diamond Creek

Melways map ref	Street number	Street name	Suburb
12 C7	side 1 (In Phipps Crescent)	Royston Street	Diamond Creek
11 J6/J7	455, 457, 459	Ryans Road	Diamond Creek
11 J6	rear 19 (1-5 Lambert Street)	Stone Street	Diamond Creek
21 G10	CNR	Bolton Street & Main Road	Eltham
22 F3	side 1, side 21	Crowe Court	Eltham
21 K8/ 22 A8	128, 137, 139, 141, 143, 145	Dalton Street	Eltham
12 B10	30, 33, 35	Dobell Drive	Eltham
21 H9	7	Falkiner Street	Eltham
22 F2	side 1	Griffin Court	Eltham
21 G10/ H10/H9/ J9/	CNR Bolton street to 650 Main road	Main Road	Eltham
21 J8/ K8/ 22 A8/ B8/ C7	CNR Main road to Wattle Grove	Mount Pleasant Road	Eltham
21 K8	27, 31,	Metery Road	Eltham
22 E5/ D5/D6	Whole road	Nyora Road	Eltham
22 B6/ C6	Wattle Grove to Eucalyptus road	Pitt Street	Eltham

Melways map ref	Street number	Street name	Suburb
22 E5/ E4/F4/F3/ F2	Cnr Nyora road to Griffin Court	Reynolds Road	Eltham
12 B10	180, 186	Zig Zag Road North	Eltham
11 K10	1, 2, 3, 4	Arcadia Way	Eltham North
22 G3	Beddoe Street to 7	Research Warrandyte Road	Research
22 F 2	135 to Beddoe Street	Thompson Crescent	Research
12 G3/ H3/H4/J4	Whole Road	Clarke Avenue	Wattle Glen
12 G3/G4	Old Hurstbridge road to Kangaroo Ground - Wattle Glen road	Hurstbridge Road	Wattle Glen
12 J4/J3	Whole road	Park Avenue	Wattle Glen
12 G4/G5	Kangaroo Ground – Wattle Glen Road to Kamarooka Drive	Reynolds Road	Wattle Glen
12 G4	32	Warrington Crescent	Wattle Glen

Appendix 5 Electric Line Clearance Post Works Audit Form

CONTRACT: Electrical Line Clearance

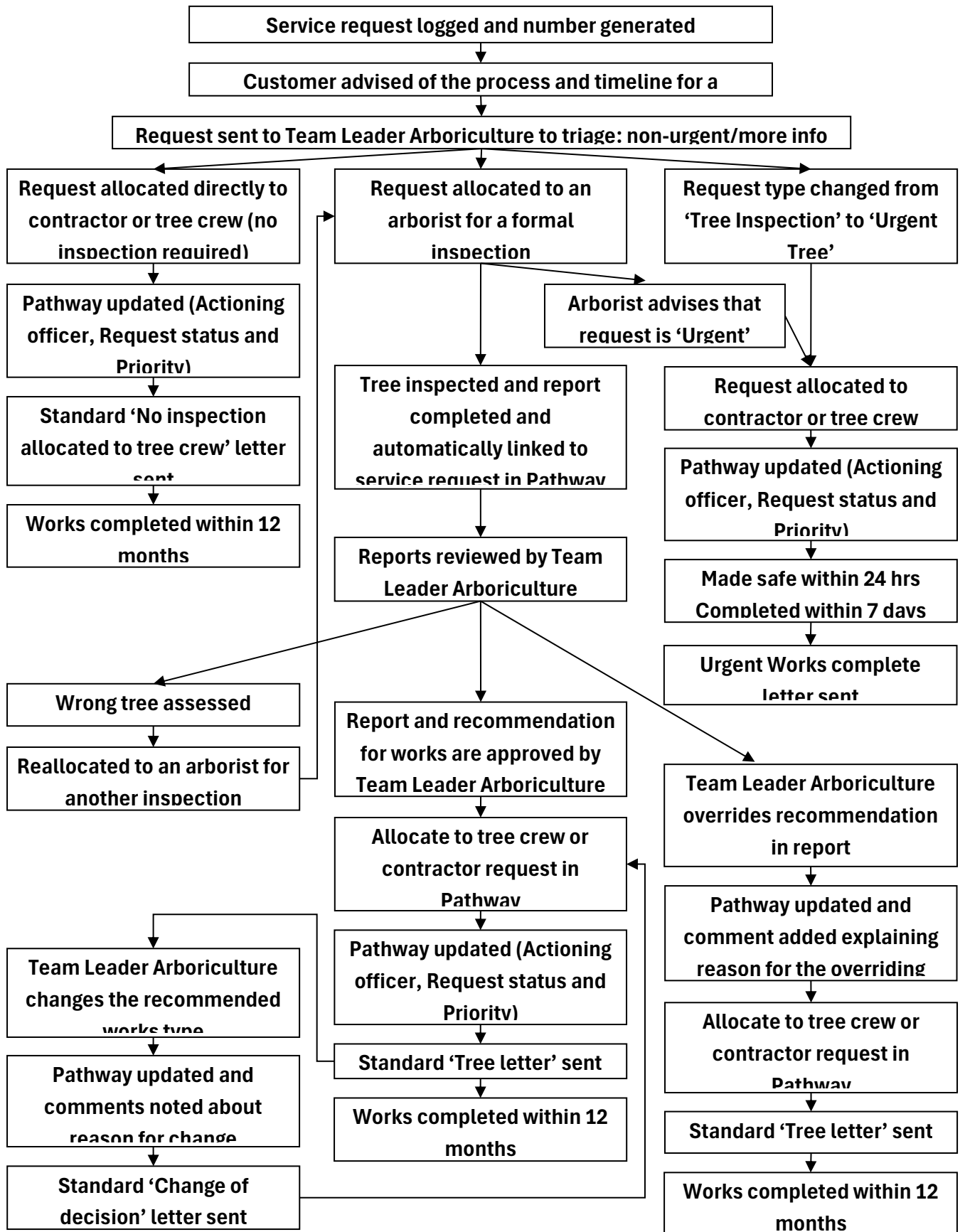
Auditors:

Date of Inspection:

Arboricultural Operational Specifications

SERVICES	Voltages			ELC			Removal			All Sites					
Contract Performance criteria	Service Wire	HV	LV	Live Line	Statutory clearance distances achieved	Pruning sympathetic to species, character and form where possible	Pruning in accordance with A 54373:2007 - Pruning of Amenity	Cut to ground level and stump sprayed	Stumps removed and root tracing to required depth	Ground reinstatement	Maintained to Australian Pruning Standards	Debris removed and site left in clean and tidy and safe condition surrounding property free of damage	Hazards mitigated. Trees requiring further investigation identified and Council notified	Average Site Rating	Average rating for site expressed as percentage
Site															
HBRA															na
Zone 1															na
Zone 2															na
Zone 3															na
Zone 4															na
Zone 5															na
Zone 6															na
Zone 7															na
Zone 8															na
Average Specification Rating															na
Specification Ave Rating Expressed as %					na	na	na	na	na	na	na	na	na		na
<p>10, 20, 30, 40, 50, 60 = Noncompliance (NC) totally unacceptable - Notice of Non-Compliance to contractor infrastructure or safety. These may include actions indicative of a systemic behaviour e.g. LV/HV or poles with transformers not clear of zones.</p> <p>infrastructure or safety. Such actions are generally isolated occurrences e.g. some service wires or poles without transformers not clear of zones.</p> <p>feedback and an opportunity to improve performance e.g. HW/LV clear of zone but species can tolerate more extensive pruning.</p> <p>100 = To specification - no issues</p>															
Comments:															

Appendix 6 Nillumbik Council's reactive tree request process



Nillumbik Shire Council

Civic Drive (PO Box 476)
Greensborough Victoria 3088

9433 3111

nillumbik@nillumbik.vic.gov.au

[**nillumbik.vic.gov.au**](http://nillumbik.vic.gov.au)

Connect with us

 [nillumbikshire](#)

 [nillumbikcouncil](#)

 [nillumbikcouncilvic](#)